



JOWEBSTER

4 St Mary's Place
Kensington Green, W8



Property Attributes

- Kitchen
- Dining Area
- Reception Room
- Six Bedrooms
- Private Garden
- Driveway Parking For Two Cars
- Garage
- 24/7 Security
- Gym
- Landscaped Communal Gardens



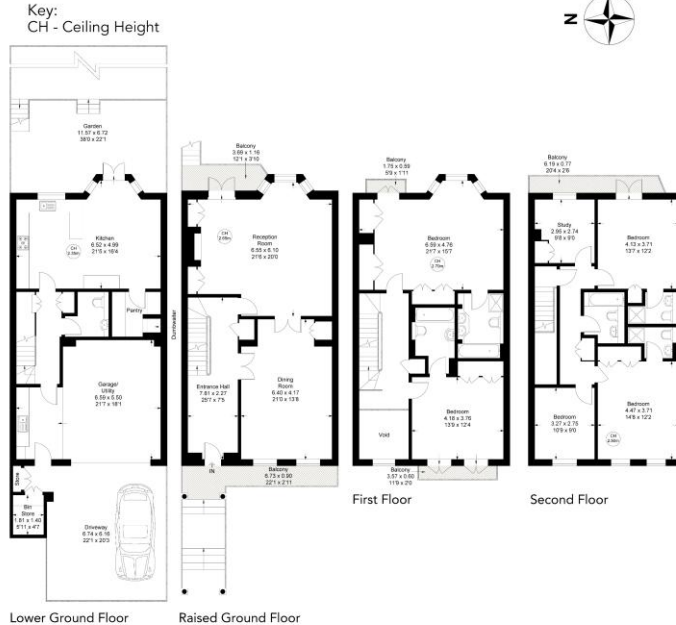
Terms

- Guide Price: £7,350,000
- Borough: Royal Borough of Kensington And Chelsea
- Tenure: Freehold
- Service Charge: £12,500 per annum
- Council Tax Band: Band G



ST. MARY'S PLACE, KENSINGTON GREEN, W8

Approximate gross internal area = 3355 sq ft / 311.77 sq m
(Including Garage/Utility and Excluding Void and External Stores)
Garage/Utility area = 337 sq ft / 31.37 sq m
External Stores area = 32 sq ft / 3.01 sq m



Not to scale, for guidance only and must not be relied upon as a statement of fact.
All measurements and areas are approximate only

+44 (0) 20 7349 7055
sales@jowebster.com

Misdescription Act

We wish to advise prospective purchasers that these sales particulars are believed to be correct, but their accuracy is in no way guaranteed, nor do they form any part of contract. We have not carried out a detailed survey nor tested the services, appliances or specific fittings. Measurements are approximate.