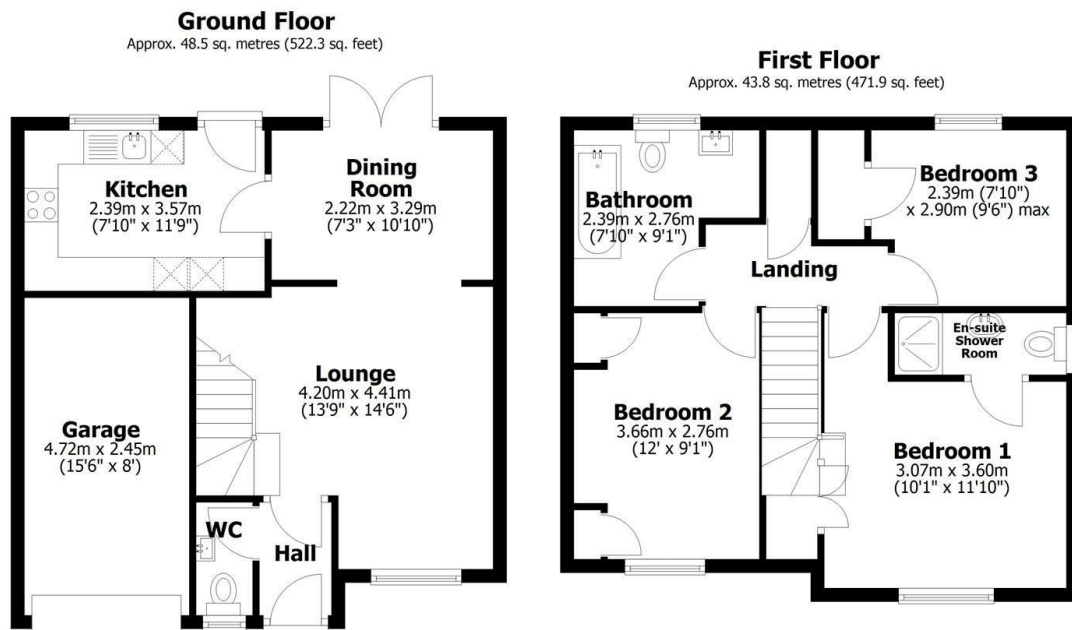




11 Norwich Drive, Bracebridge Heath, Lincoln, LN4 2TF

Asking Price £250,000

- Three Bedrooms
- Fully Fitted Kitchen
- Cul de Sac Location with no through traffic
- EPC Rating TBC
- Family Bathroom and Ensuite to Master Bedroom
- Integral Garage and Driveway Parking
- Immaculately Presented Throughout
- Large Lounge and separate Dining Area
- Close to Schools and Amenities
- Council Tax Band B



Total area: approx. 92.4 sq. metres (994.2 sq. feet)

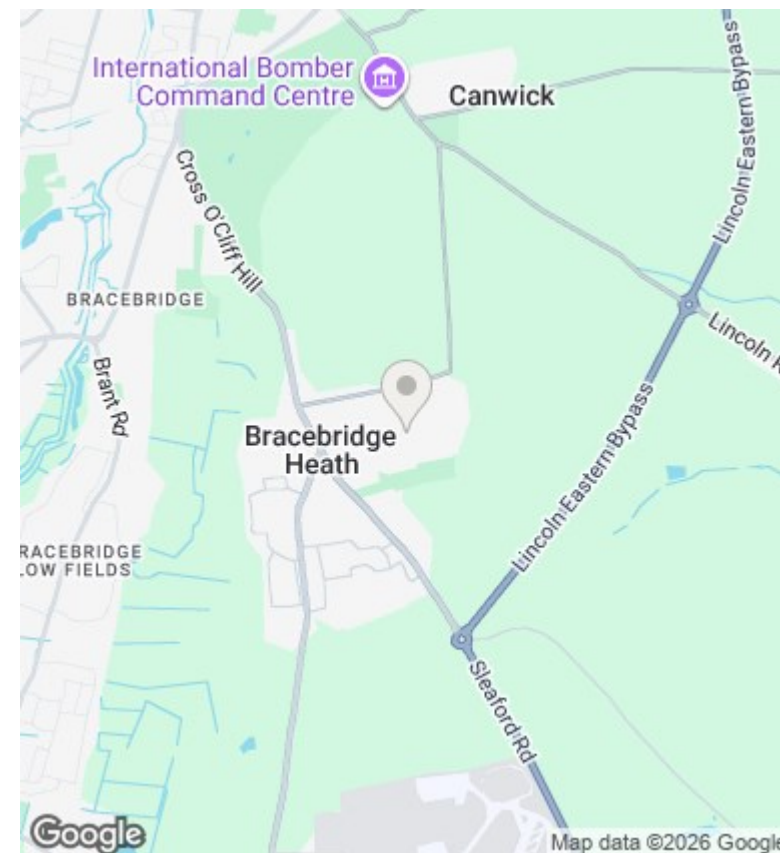
Directions

Viewings

Viewings by arrangement only. Call 01522 396059 to make an appointment.

Council Tax Band

EPC Rating:



Energy Efficiency Rating		
	Current	Potential
Very energy efficient - lower running costs		
(92-plus) A		
(81-91) B		
(69-80) C		
(55-68) D		
(39-54) E		
(21-38) F		
(1-20) G		
Not energy efficient - higher running costs		
England & Wales	EU Directive 2002/91/EC	