



## Church Road, TW11

£2,195 Per calendar month

A newly redecorated two double bedroom apartment close to Teddington High Street, with a large reception room with plenty of space for dining, a separate kitchen and two bathrooms.

Church Road is a turning off Broad Street which is an extension of Teddington High Street with plenty of shops, bars and restaurants. The River Thames and Bushy Park are within easy reach.

### Features

- Victorian Conversion
- Two Double Bedrooms
- Two Bathrooms
- High Ceilings
- Feature Fireplace
- Newly Redecorated



## Church Road, TW11

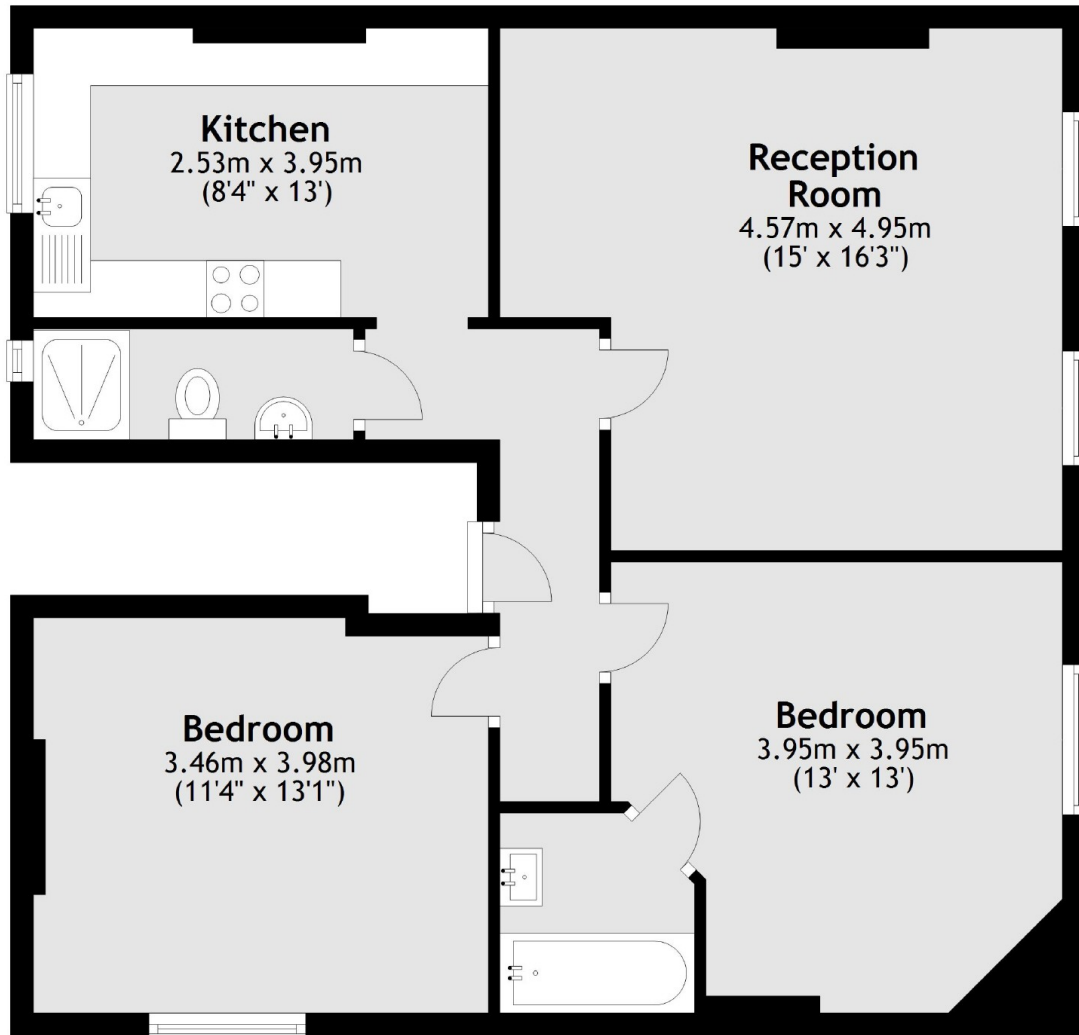
Located on the first floor there is a large reception room with plenty of space for sofas and a dining room table with large windows and high ceilings there is plenty of natural light and feature fireplace.

The kitchen is separate and there are two generous double bedrooms. The master has an en suite bathroom, and there is an additional bathroom.



# Church Road, Teddington, TW11

## First Floor



Total area: approx. 71.1 sq. metres (765.1 sq. feet)