



## Pinecrest Drive, £375,000

- Three Bedrooms Semi-Detached
- No Ongoing Chain
- Off Road Parking for Four Cars
- Double Glazed Conservatory
- Secluded Location Close to Train Station
- EPC Rating: C



 3  1  1



## About the property

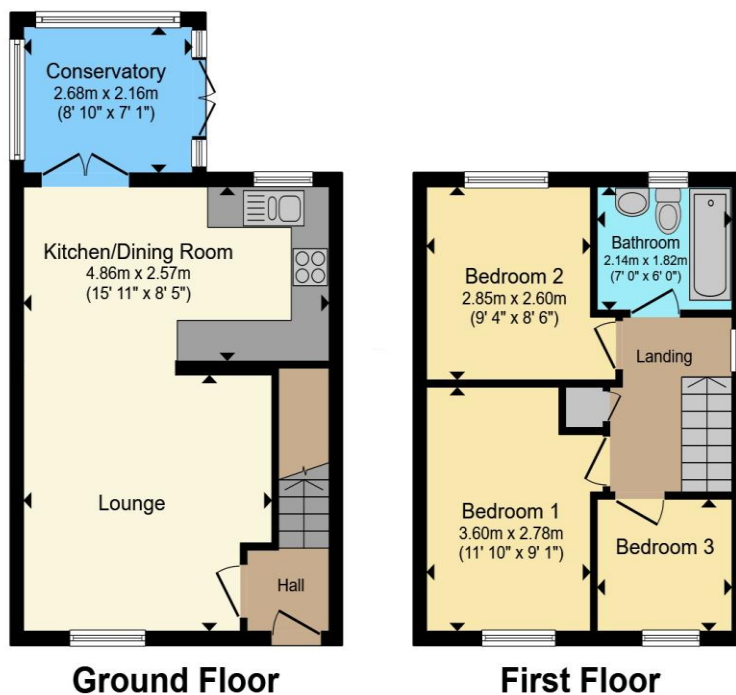
A three bedroom family home, comprises open plan living space & conservatory on the ground floor with three bedrooms and a bathroom to the first floor. Benefiting from driveway for up to 4 cars and side access to garden. Boasting Karndean flooring throughout the ground floor continued into the conservatory, high gloss cream fitted kitchen with integral oven & space for utilities. Within close proximity to Lisvane train station, Cefn Onn park, Thornhill Primary school, Sainsbury's and bus stops providing great commuter links in and around the city and city centre. Also located within a short distance to Llanishen village aswell as other supermarkets and shops. To book your appointment please call Peter Alan Llanishen on 02920 618552 or book your appointment online 24/7 at [www.peteralan.co.uk](http://www.peteralan.co.uk).



02920 618552

llanishen@peteralan.co.uk

## Floorplan



Total floor area 69.7 m<sup>2</sup> (750 sq.ft.) approx

This floor plan is for illustrative purposes only. It is not drawn to scale. Any measurements, floor areas (including any total floor area), openings and orientation are approximate. No details are guaranteed, they cannot be relied upon for any purpose and they do not form part of any agreement. No liability is taken for any error, omission or misstatement. A party must rely upon its own inspection(s). Powered by [www.propertybox.io](http://www.propertybox.io)

## Important Information

Note while we endeavour to make our sales details accurate and reliable, if there is any point which is of particular interest to you, please contact the office and we will be pleased to confirm the position for you. We have not personally tested any apparatus, equipment, fixtures, fittings or services and cannot verify they are in working order or fit for their purposes. Nothing in these particulars is intended to indicate that carpets or curtains, furnishings or fittings, electrical goods (whether wired or not). Gas fires or light fittings or any other fixtures not expressly included form part of the property offered for sale. This computer generated Floorplan, if applicable, is intended as a general guide to the layout and design of the property. It is not to scale and should not be relied upon for dimensions. Tenure: We cannot confirm the tenure of the property as we have not had access to the legal documents. The buyer is advised to obtain verification from their solicitor or surveyor.

Peter Alan Limited is registered in England and Wales under company number 2073153, Registered Office is Cumbria House, 16-20 Hockliffe Street, Leighton Buzzard, Bedfordshire, LU7 1GN. VAT Registration Number is 500 2481 05. For activities relating to regulated mortgages and non-investment insurance contracts, Peter Alan Limited is an appointed representative of Connells Limited which is authorised and regulated by the Financial Conduct Authority. Connells Limited's Financial Services Register number is 302221. Most buy-to-let