



5 2 2

Pres Coch Cottage Prescoch Lane, Pontypool

£700,000

pa peter
alan

01633 484855
cwmbran@peteralan.co.uk

About the property

Enjoying an exceptional setting with far-reaching, uninterrupted views, Prescoch Cottage is an elegant and beautifully appointed five-bedroom residence offering refined living in a truly idyllic location.

Immaculately presented throughout, the home seamlessly blends contemporary comfort with timeless charm. The heart of the property is a magnificent open-plan kitchen, dining and living space - a light-filled environment designed for both everyday living and sophisticated entertaining. A practical boot room adds convenience and functionality, perfectly suited to rural and family lifestyles.

The accommodation offers five generously proportioned bedrooms, including two luxurious en-suite suites, providing flexible living arrangements for family and guests alike.

Outside, the property is equally impressive. Expansive landscaped gardens surround the home, featuring a generous patio ideal for alfresco dining, sweeping lawns, and a striking fish pond that creates a tranquil focal point. A private driveway and garage provide ample parking and storage.

Positioned to take full advantage of its stunning outlook, Prescoch Cottage offers a rare opportunity to acquire a distinctive home where quality, space and setting combine effortlessly to deliver an exceptional lifestyle in the heart of Penyrheol.



Accommodation



Hallway

Kitchen/Living Room

34' 9" x 28' 7" (10.59m x 8.71m)

Boot Room

11' 10" x 11' 2" (3.61m x 3.40m)

Reception Room

12' 10" x 11' 10" (3.91m x 3.61m)

Shower Room

Bedroom One

16' 1" x 12' 6" (4.90m x 3.81m)

Ensuite

Bedroom Two

16' 1" x 11' 2" (4.90m x 3.40m)

Ensuite

Bedroom Three

13' 9" x 10' 6" (4.19m x 3.20m)

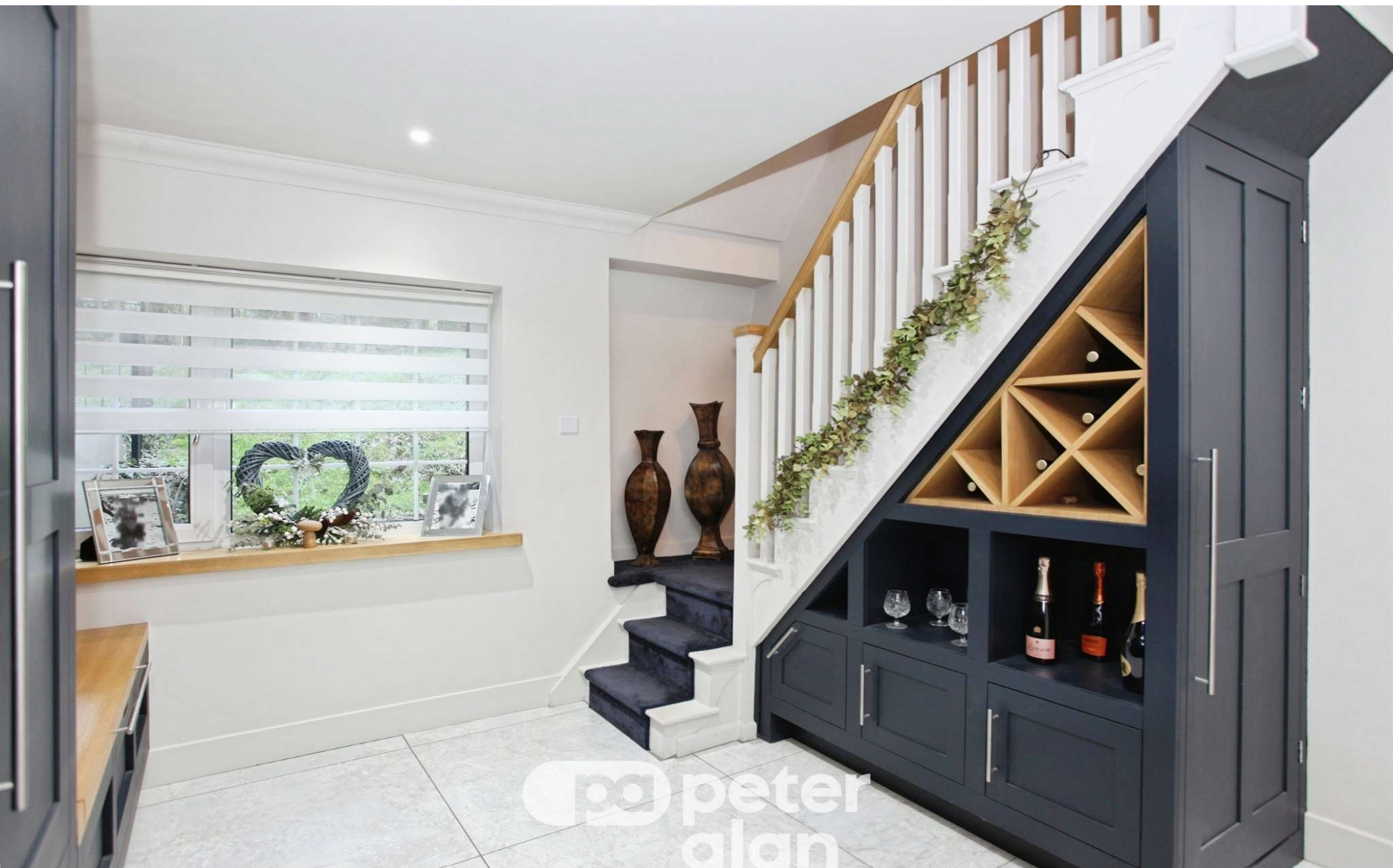
Bedroom Four

12' 2" x 10' 2" (3.71m x 3.10m)

Bedroom Five

11' 6" x 10' 6" (3.51m x 3.20m)

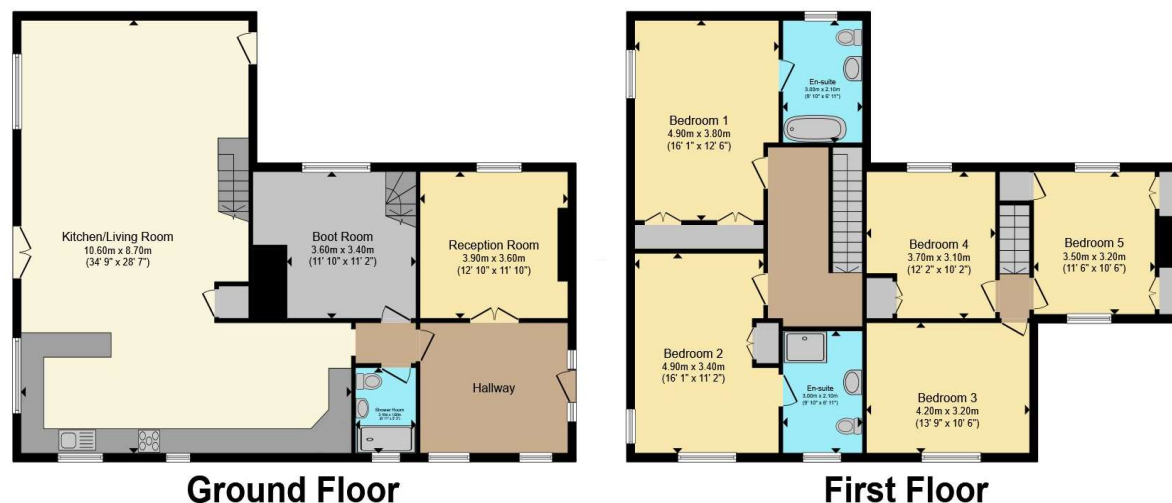




 peter
alan

01633 484855

cwmbran@peteralan.co.uk



Total floor area 229.5 m² (2,470 sq.ft.) approx

This floor plan is for illustrative purposes only. It is not drawn to scale. Any measurements, floor areas (including any total floor area), openings and orientation are approximate. No details are guaranteed, they cannot be relied upon for any purpose and they do not form part of any agreement. No liability is taken for any error, omission or misstatement. A party must rely upon its own inspection(s). Powered by www.propertybox.io



Important Information

Note while we endeavour to make our sales details accurate and reliable, if there is any point which is of particular interest to you, please contact the office and we will be pleased to confirm the position for you. We have not personally tested any apparatus, equipment, fixtures, fittings or services and cannot verify they are in working order or fit for their purposes. Nothing in these particulars is intended to indicate that carpets or curtains, furnishings or fittings, electrical goods (whether wired or not). Gas fires or light fittings or any other fixtures not expressly included form part of the property offered for sale. This computer generated floorplan, if applicable, is intended as a general guide to the layout and design of the property. It is not to scale and should not be relied upon for dimensions. Tenure: We cannot confirm the tenure of the property as we have not had access to the legal documents. The buyer is advised to obtain verification from their solicitor or surveyor.

Peter Alan Limited is registered in England and Wales under company number 2073153. Registered Office is Cumbria House, 16-20 Hockliffe Street, Leighton Buzzard, Bedfordshire, LU7 1GN. VAT Registration Number is 500 2481 05. For activities relating to regulated mortgages and non-investment insurance contracts, Peter Alan Limited is an appointed representative of Connells Limited which is authorised and regulated by the Financial Conduct Authority. Connells Limited's Financial Services Register number is 302221. Most buy-to-let mortgages are not regulated.

