



Bathgate Place, W13

£550,000

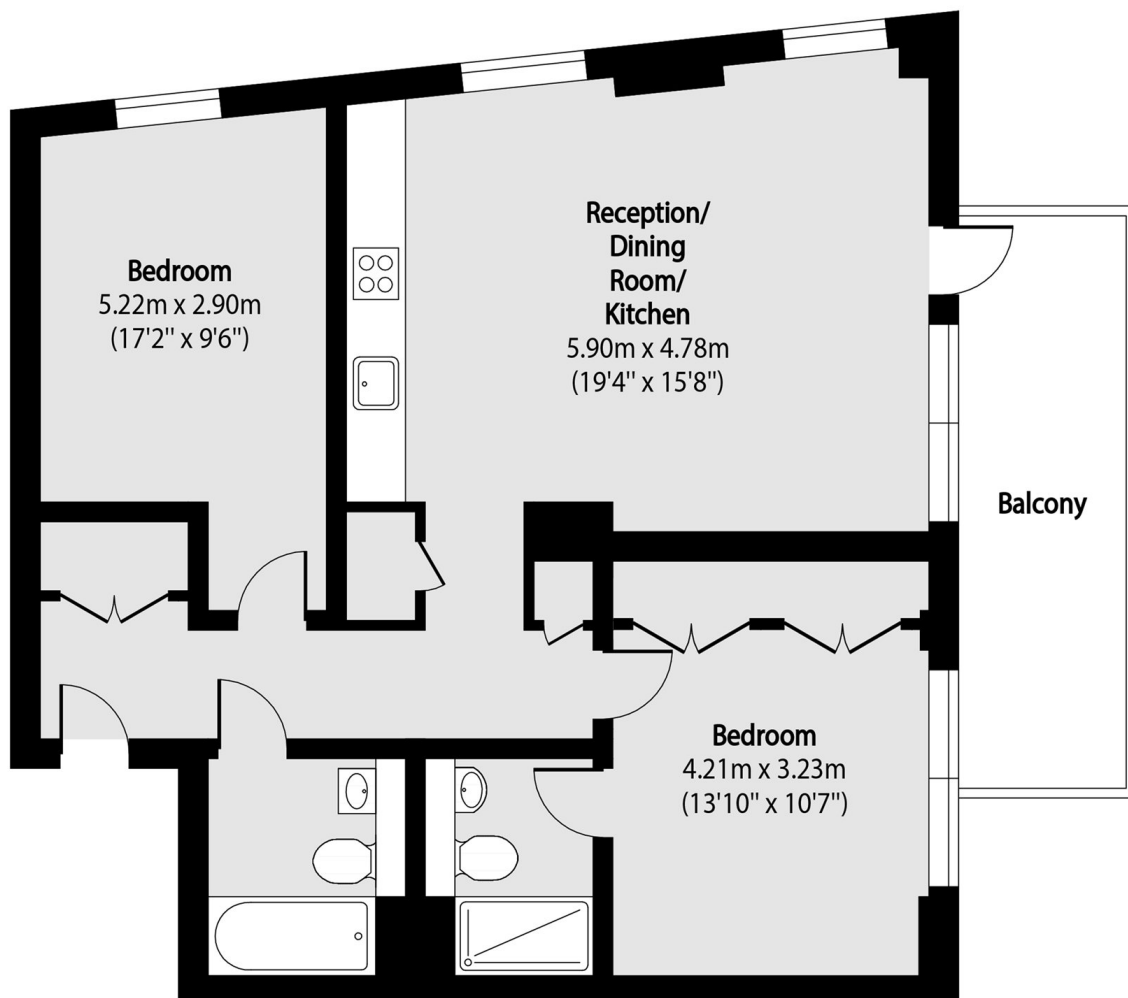
A spacious two-bedroom, two-bathroom apartment set within a contemporary development completed just four years ago. Offering over 800 sq.ft of accommodation, a private balcony, a long lease, and the remainder of the new-build warranty along with concierge service. There is also underfloor heating and air conditioning throughout.

Bathgate Place is ideally located for easy access to both West Ealing (three minute walk) and Ealing Broadway stations with a wide range of transport options including the new Elizabeth Line, Central and District Lines. Multiple gyms, restaurants and amenities are all a short walk.

Features

- Two Bedrooms
- Two Bathrooms
- Large Balcony
- Residents Concierge
- Lift Access
- Podium Communal Gardens

Bathgate Place, London, W13



Total area (approx): 76.48 sq m (823 sq. ft)

Balcony total area (approx): 9.86 sq m (106 sq. ft)