



11, Devey Way, Nr Hertford

SG14 2WU

Guide Price £975,000



stevenoates.com



11 Devey Way, Goldings, Nr Hertford, Herts, SG14 2WU

An beautifully presented and modernised four bedroom character house set within the exclusive Goldings Country Estate. Goldings itself is a gated country estate set in beautiful grounds of almost 110 acres with a collection of stunning houses and a grand converted manor house all within easy reach of Hertford North train station. The generous accommodation includes of 1826 sq ft of accommodation and comprises of a large entrance hall, ground floor cloakroom, 20ft living room, modern kitchen/diner leading onto a utility room and doors to access the rear garden. On the first floor, there is a large main bedroom suite including a modern bathroom en-suite and fitted wardrobes, 3 further double bedrooms and a family bathroom. Externally the property benefits from a secluded mature rear garden car port and ample further parking directly opposite the property.

The property is nestled within the beautiful grounds of the Goldings Country Estate located on the northern outskirts of Hertford itself. Hertford North train station is only a short distance away and provides fast services to London's Kings Cross and Moorgate. Hertford town centre is also closeby serving as a quaint market town with a 'coffee shop' culture and excellent choice of shops and restaurants.



70 Fore Street, Hertford, Hertfordshire, SG14 1BY



70 Fore Street, Hertford, Hertfordshire, SG14 1BY

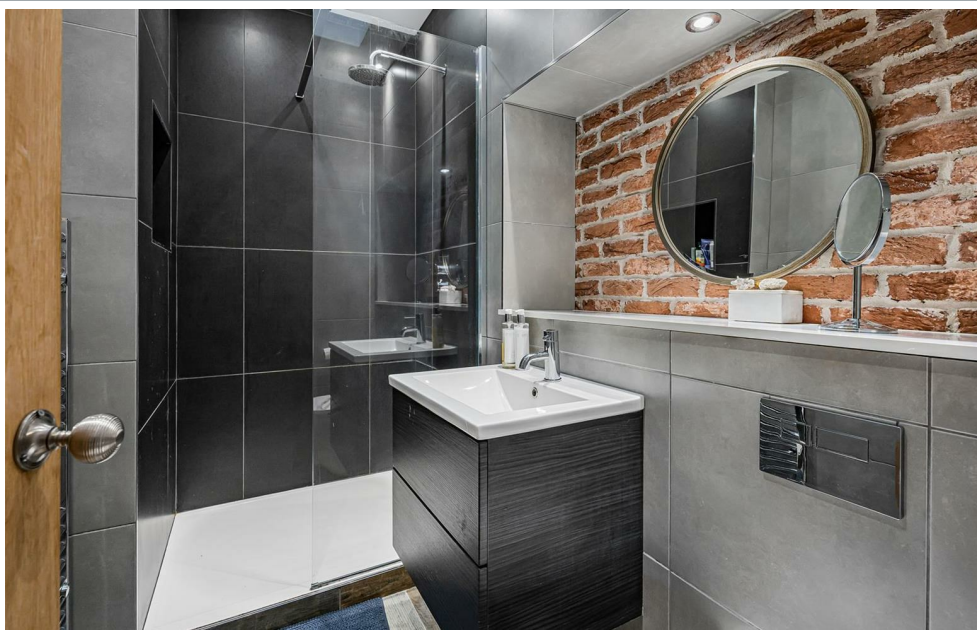


70 Fore Street, Hertford, Hertfordshire, SG14 1BY





70 Fore Street, Hertford, Hertfordshire, SG14 1BY



70 Fore Street, Hertford, Hertfordshire, SG14 1BY



70 Fore Street, Hertford, Hertfordshire, SG14 1BY





70 Fore Street, Hertford, Hertfordshire, SG14 1BY



70 Fore Street, Hertford, Hertfordshire, SG14 1BY

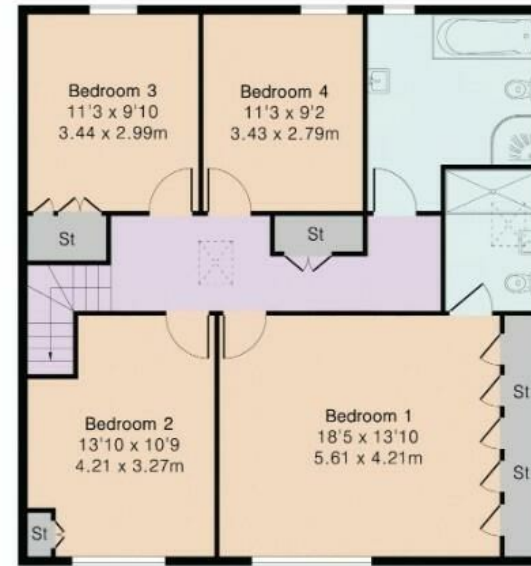
Approximate Gross Internal Area 1826 sq ft - 170 sq m

Ground Floor Area 913 sq ft – 85 sq m

First Floor Area 913 sq ft – 85 sq m



Ground Floor



First Floor



Floor plan produced in accordance with RICS Property Measurement 2nd Edition. Although Pink Plan Ltd ensures the highest level of accuracy, measurements of doors, windows and rooms are approximate and no responsibility is taken for error, omission or misstatement. These plans are for representation purposes only and no guarantee is given on the total square footage of the property within this plan. The figure icon is for initial guidance only and should not be relied on as a basis of valuation.

These particulars, whilst believed to be accurate are set out as a general outline only for guidance and do not constitute any part of an offer or contract. Intending purchasers should not rely on them as statements of representation of fact, but must satisfy themselves by inspection or otherwise as to their accuracy. No person in this firm's employment has the authority to make or give any representation or warranty in respect of the property.



stevenoates.com