





## Penton Hook Marina Chertsey KT16

Discover the charm of living on the Thames with this exceptional two-storey houseboat, formerly a Dutch barge, now transformed into a stunning three bedroom design-led home. Nestled within a serene neighbourhood in Surrey, this spacious floating residence offers a unique perspective on life.

The houseboat features a modern design with quartz worktops, underfloor heating (diesel), a Stovax wood burner, a wheelhouse, and bi-folding glass doors that open to a deck. The high ceilings in the reception room create a sense of volume, while an abundance of windows flood the space with natural light, enhancing the bright and airy aesthetic.

### KEY FEATURES

**Two-storey houseboat**

**Three bedrooms**

**Two bathrooms plus guest toilet**

**Quartz kitchen worktops**

**Stovax wood burner**

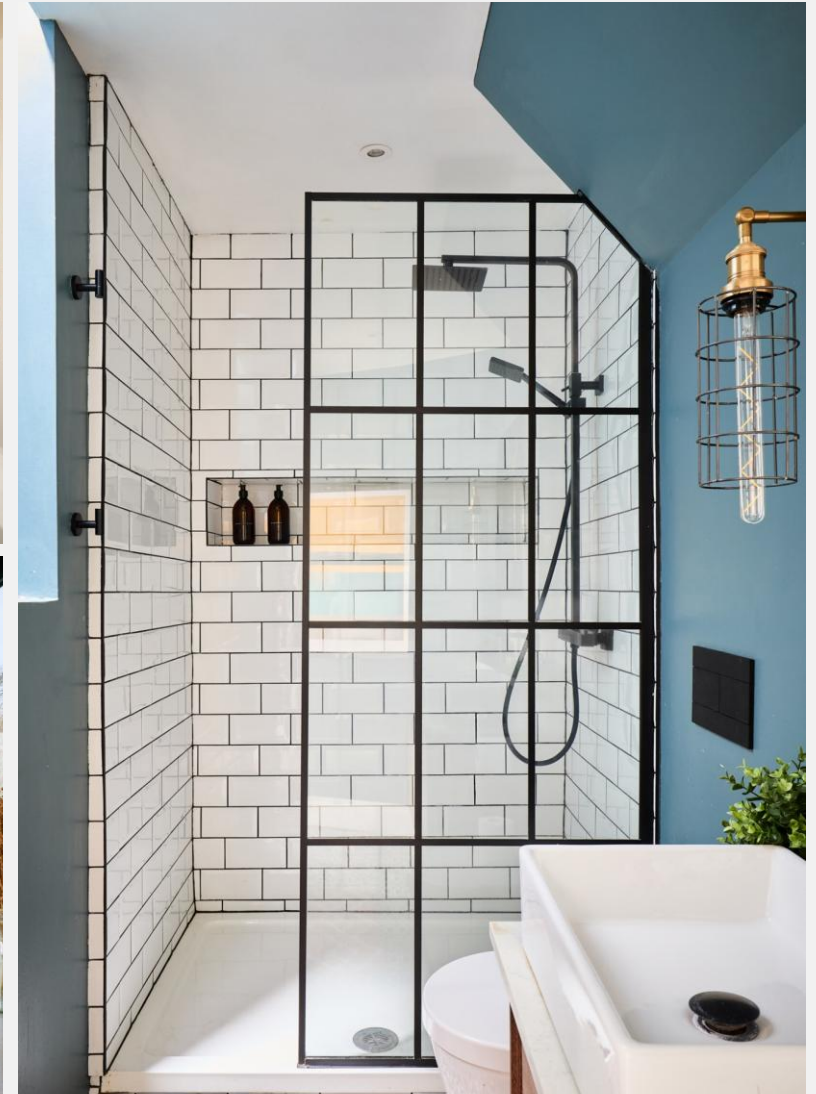
**Underfloor heating**

**Stunning entertaining deck**

**Nestled within 80 acres of tranquil waters**

**Close to the vibrant Staines-upon-Thames**

**Excellent transport links**

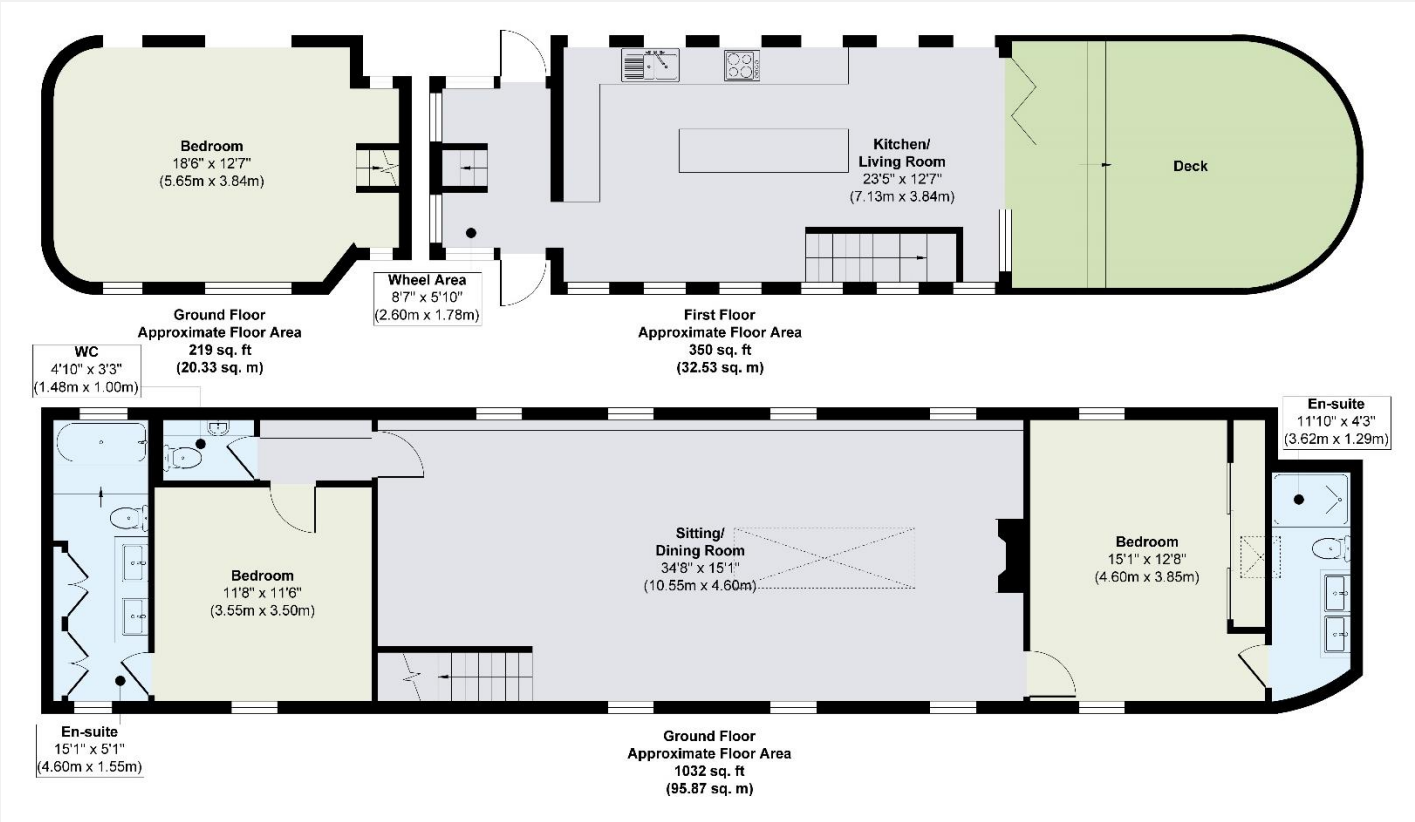


The 15-month conversion project aimed to maximise space and comfort, ensuring that the home feels nothing like a traditional boat. The layout and design, have been meticulously executed to create a home that rivals any bricks-and-mortar property. Experience the perfect blend of innovation and finesse in this 30 metre long floating home, where every detail has been thoughtfully crafted to provide a luxurious and comfortable living environment.

Nestled within 80 acres of tranquil waters on the non-tidal reaches of the River Thames, Penton Hook Marina is Britain's largest inland marina. Located close to the vibrant town of Staines-upon-Thames, this picturesque marina offers a perfect blend of natural beauty and modern amenities. Nearby, you can explore historic sites such as Runnymede, where King John signed the Magna Carta, and the iconic Windsor Castle. With excellent transport links to London via road and rail, Penton Hook Marina provides an ideal setting for both leisure and convenience.







KEY INFORMATION

Local authority:	Runnymede Borough Council
Internal area:	1,601 sq. ft. / 148.73 sq. m.
No. of bedrooms:	3
Mooring type:	Currently on Leisure, can be changed
Mooring fees:	Current fees £1,351.89 per month
Council tax:	Not payable on Leisure licence

World Waterside Ltd trading as riverhomes for themselves and its clients give notice that 1: They are not authorised to make or give any representations or warranties in relation to the property either here or elsewhere, either on their own behalf or on behalf of their client or otherwise. 2: These particulars do not form part of any offer or contract and must not be relied upon as statements or representations of fact. Any areas, measurements or distances are approximate. The text, photographs and plans are for guidance only and are not necessarily comprehensive. 3: It should not be assumed that the property has all necessary planning, building regulation or other consents and any services, equipment or facilities have not been tested. 4: Lease details, service charges, ground rent (where applicable) and council tax are given as a guide only and should be checked and confirmed by your Solicitor prior to exchange of contracts. 5: They assume no responsibility and any intending purchasers or tenants must satisfy themselves by inspection or otherwise as to the correctness of each of the statements contained within these particulars. If you require clarification of any points please contact us.