



Hyde Park Gardens Mews, W2



## Hyde Park Gardens Mews, W2

£2,795,000 | Freehold

1,629 Sq Ft | 151 Sq M

3 Bedrooms. 3 Bathrooms. 1 Reception.

### Features

South Facing

Garage

Large Conservatory

Mews

### Additional Information

Council Tax Band

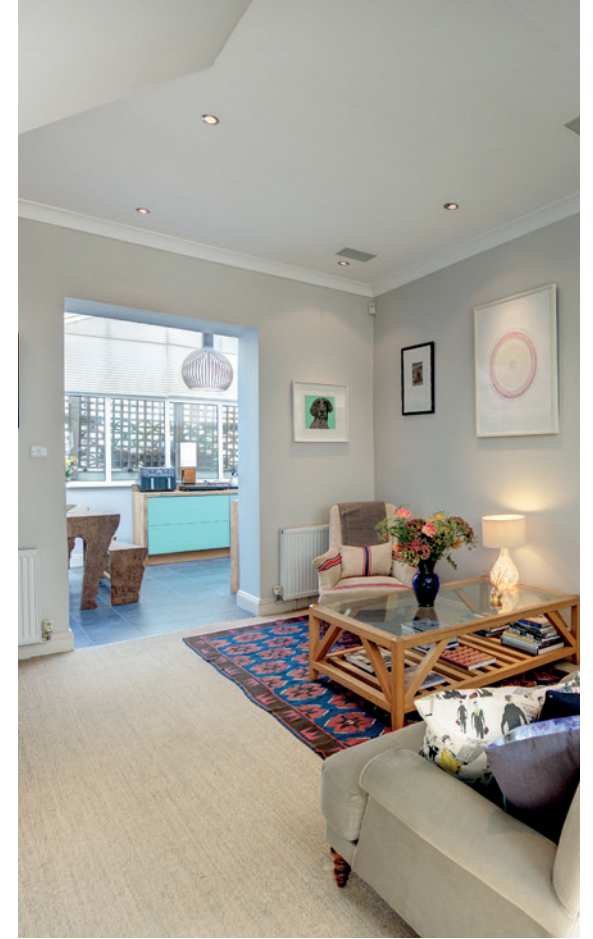
G

EPC

D

Council

City of Westminster





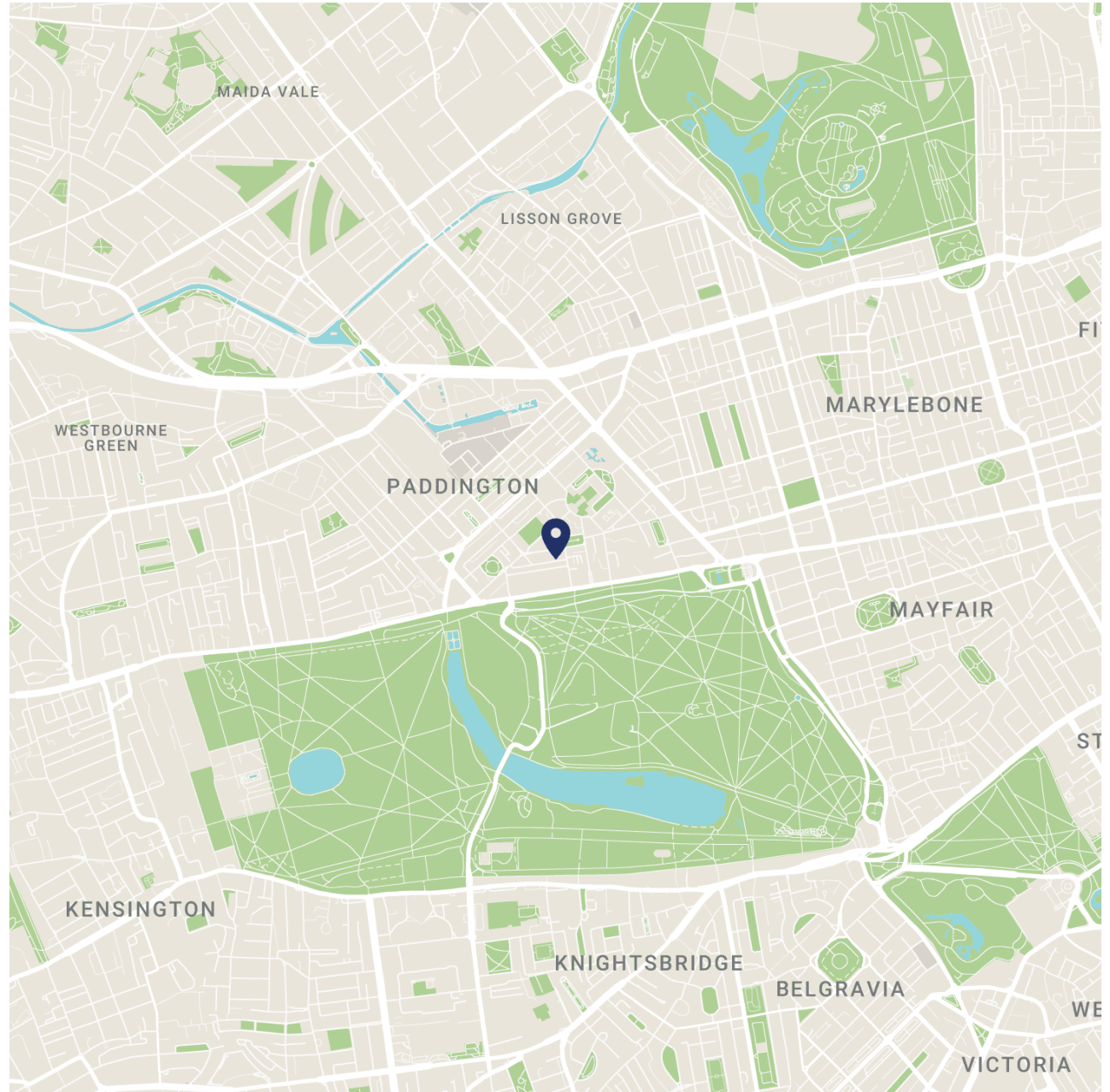
## The Property

This most charming three-bedroom mews house occupies a highly desirable south-facing position and benefits from an integral garage. Well-proportioned throughout, the property offers a flexible layout and significant potential for enhancement. Subject to the necessary planning permissions, a purchaser may wish to reconfigure and extend the house to suit their individual needs, taking full advantage of its prime position.



## The Location

The house is situated on what is widely considered to be the most attractive and sought-after mews within the prestigious Hyde Park Estate. This peaceful and picturesque enclave offers a unique blend of charm and convenience, with the open spaces of Hyde Park just moments away, as well as easy access to the boutiques, restaurants, and transport links of Connaught Village, Paddington, and Marylebone. The area is known for its elegant architecture, community feel, and proximity to some of central London's finest amenities.



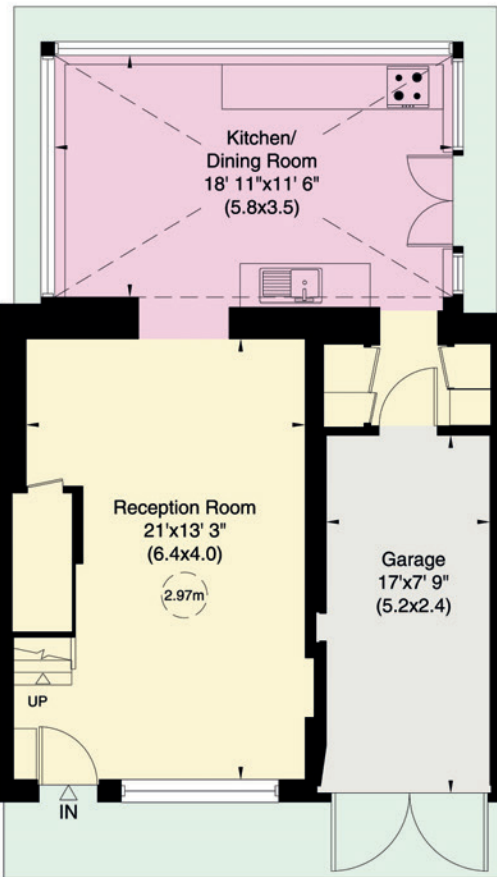
# Hyde Park Gardens Mews, W2

Approximate Gross Internal Area

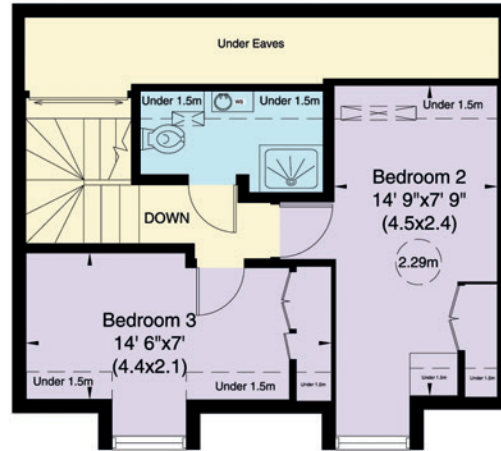
151 sq m (1629 sq ft) Including Under Eaves and Under 1.5m

140 sq m (1508 sq ft) Excluding Under Eaves and Under 1.5m

Not to Scale, for identification only



Ground Floor



Second Floor



First Floor

---

## Selling Agent

Alex Stroud

+44 (0)7584 038000

[alex@sflproperty.co.uk](mailto:alex@sflproperty.co.uk)

---

## Contact Us

+44 (0)20 7589 2970

[sales@sflproperty.co.uk](mailto:sales@sflproperty.co.uk)

---

For guidance only and must not be relied upon as a statement of fact.  
All measurements and areas are approximate only (and have been prepared in accordance with the current edition of the RICS Code of Measuring Practice).





## CONTACT US

---

020 7589 2970

[sales@sflproperty.co.uk](mailto:sales@sflproperty.co.uk)

---

16A Adam & Eve Mews  
Kensington  
London  
W8 6UJ