



## Elsham Road, W14

£800,000

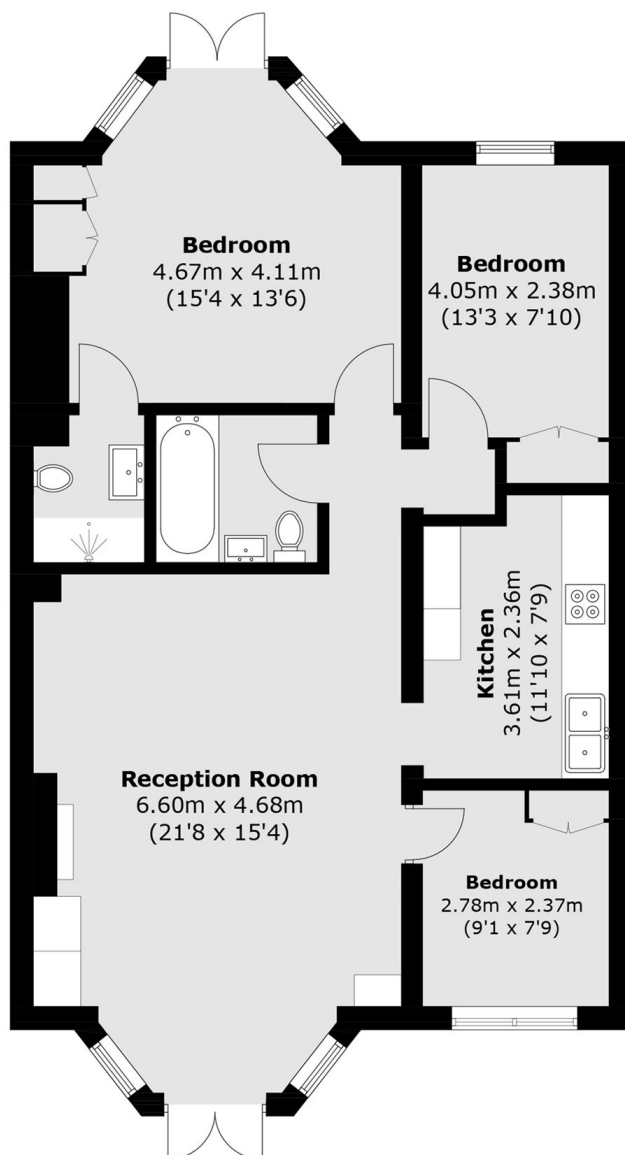
A well-presented three-bedroom ground floor flat set within an impressive Victorian terrace, featuring its own private entrance and two outdoor spaces. The property offers a spacious reception room, a separate kitchen, two bathrooms and also benefits from a share of freehold.

Elsham Road is ideally located for the array of shops and amenities of Westfield shopping centre. The award winning Holland Park is only a short stroll away.

### Features

- Share of Freehold
- Private Entrance
- Separate Kitchen
- Front and Rear Garden
- Two Bathrooms
- Approx 904sqft

# Elsham Road, London, W14



Total area (approx.): 84.0 sq. m (904.1 sq. ft)