



*Ravensthorpe Drive*  
Loughborough

2 Bed 1st Floor Apartment • LE11 4WA • £825 pcm • £950 Deposit



## *Ravensthorpe Drive, Loughborough*

Situated on a quiet road, a well presented first floor apartment in Loughborough. This part furnished property comes with two bedrooms, kitchen, lounge, and bathroom. Appliances are included. Available now.

### **Lounge / Diner**

Overlooking Ravensthorpe Drive, a sizeable lounge, that could also be used as a diner.

### **Kitchen**

An L-shaped kitchen, including an under counter fridge, freezer, washing machine, oven, and hob.

### **Master Bedroom**

A double bedroom including built-in storage and furniture pictured.

### **Bedroom Two**

This bedroom includes storage and furniture pictured.

### **Bathroom**

A three piece bathroom, including a bath, sink, toilet, and shower above the bath.

### **Parking**

On street parking available without restriction.

### **Electric Heating**

Electric heating throughout.

### **Glazing**

Modern, good quality, uPVC double glazing.

### **Energy Performance**

**TBC**

We aim to make our particulars both accurate and reliable. However they are not guaranteed; nor do they form part of an offer or contract. If you require clarification on any points then please contact us, especially if you are traveling some distance to view. All measurements are to widest point.



Kitchen



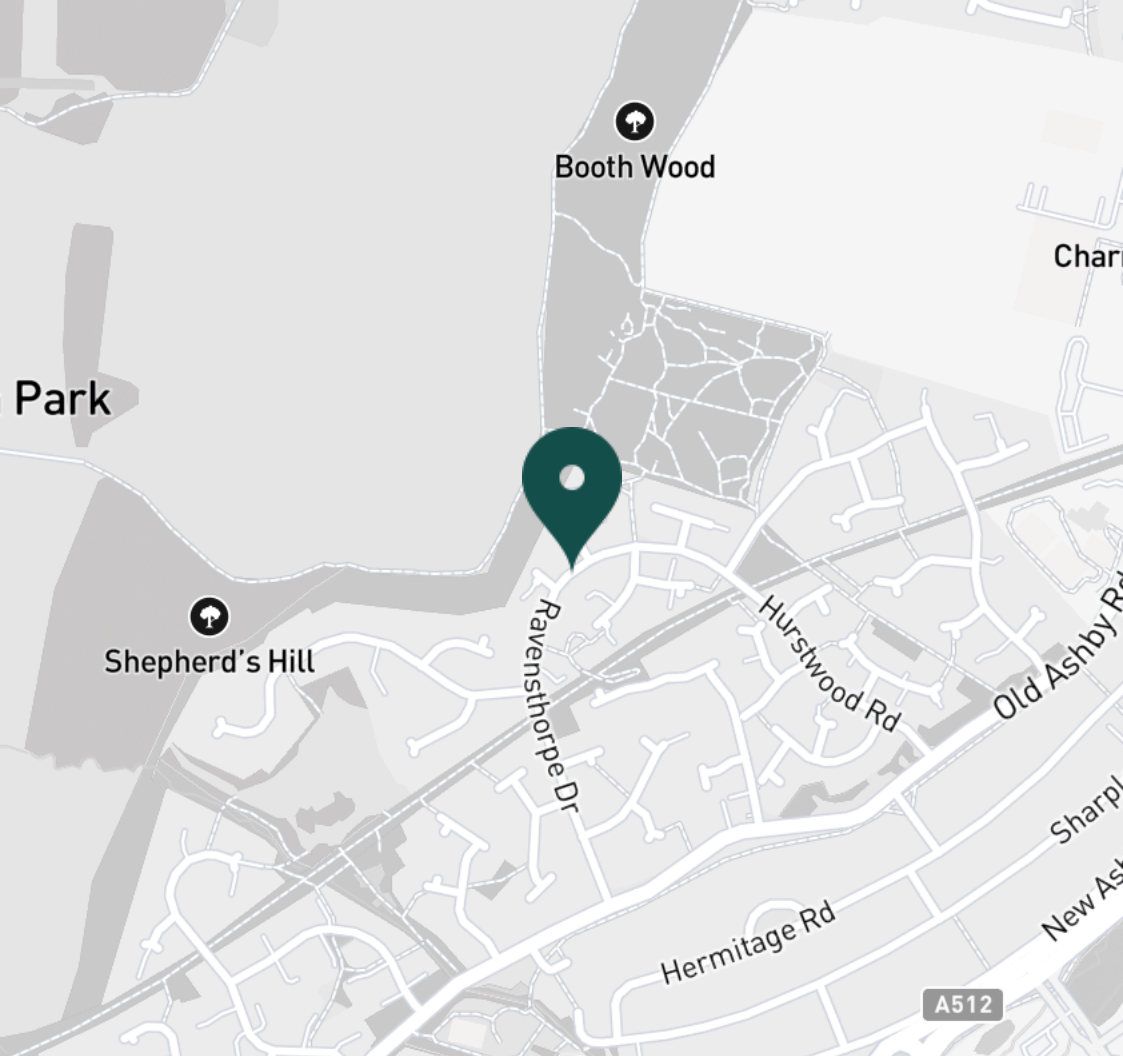
Kitchen



Kitchen



Lounge



**SUPERMARKETS**

Co-op Food Knightthorpe Rd	1.3 mi
Morrisons Loughborough	1.9 mi
Lidl Loughborough	2.0 mi
Sainsburys Loughborough	2.1 mi
Aldi Loughborough	2.2 mi

**GYMS**

Holywell Fitness Centre	1.2 mi
Burleigh Springs Leisure Club	1.3 mi
Loughborough University Pool	1.6 mi
Loughborough Sport	1.7 mi
Radmoor Centre	1.7 mi

**TRAIN STATIONS**

Loughborough	3.0 mi
Barrow upon Soar	5.5 mi
Sileby	7.4 mi
East Midlands Parkway	10.2 mi
Syston	11.7 mi

**NURSERY SCHOOLS**

Charnwood College Playgroup	0.9 mi
Little House Day Nursery	1.3 mi
Kingscliffe Day Nursery	1.7 mi
Loughborough Campus Nursery	1.8 mi
Nanpantan Nursery School	1.8 mi

**PRIMARY SCHOOLS**

Booth Wood PS	0.6 mi
Ashmount Sch	0.7 mi
Thorpe Acre Junior Sch	1.0 mi
St Marys Catholic PS	1.9 mi
Stonebow County PS	1.9 mi

**HIGH SCHOOLS**

Ashmount Sch	0.7 mi
De Lisle Catholic Science C	0.8 mi
The Garendon High Sch	0.8 mi
Charnwood College	0.9 mi
Loughborough College	1.7 mi

Discover  
*Loughborough*





Lounge



Lounge



Master Bedroom



Master Bedroom



Master Bedroom



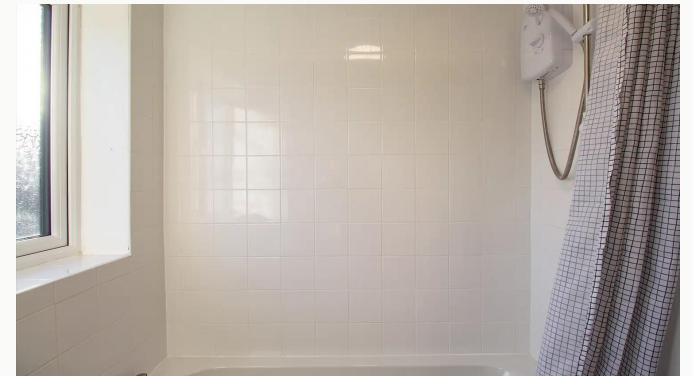
Bedroom Two



Bedroom Two



Bathroom



Bathroom



Bathroom



Hallway



Apartment Entrance



Block Entrance

**Available**  
From 26/03/2026

**Comes**  
Part Furnished

**Bedrooms**  
2

**Receptions**  
1

**Bathrooms**  
1

**Parking**  
On Street

**Postcode**  
LE11 4WA

**Rent**  
£825 pcm

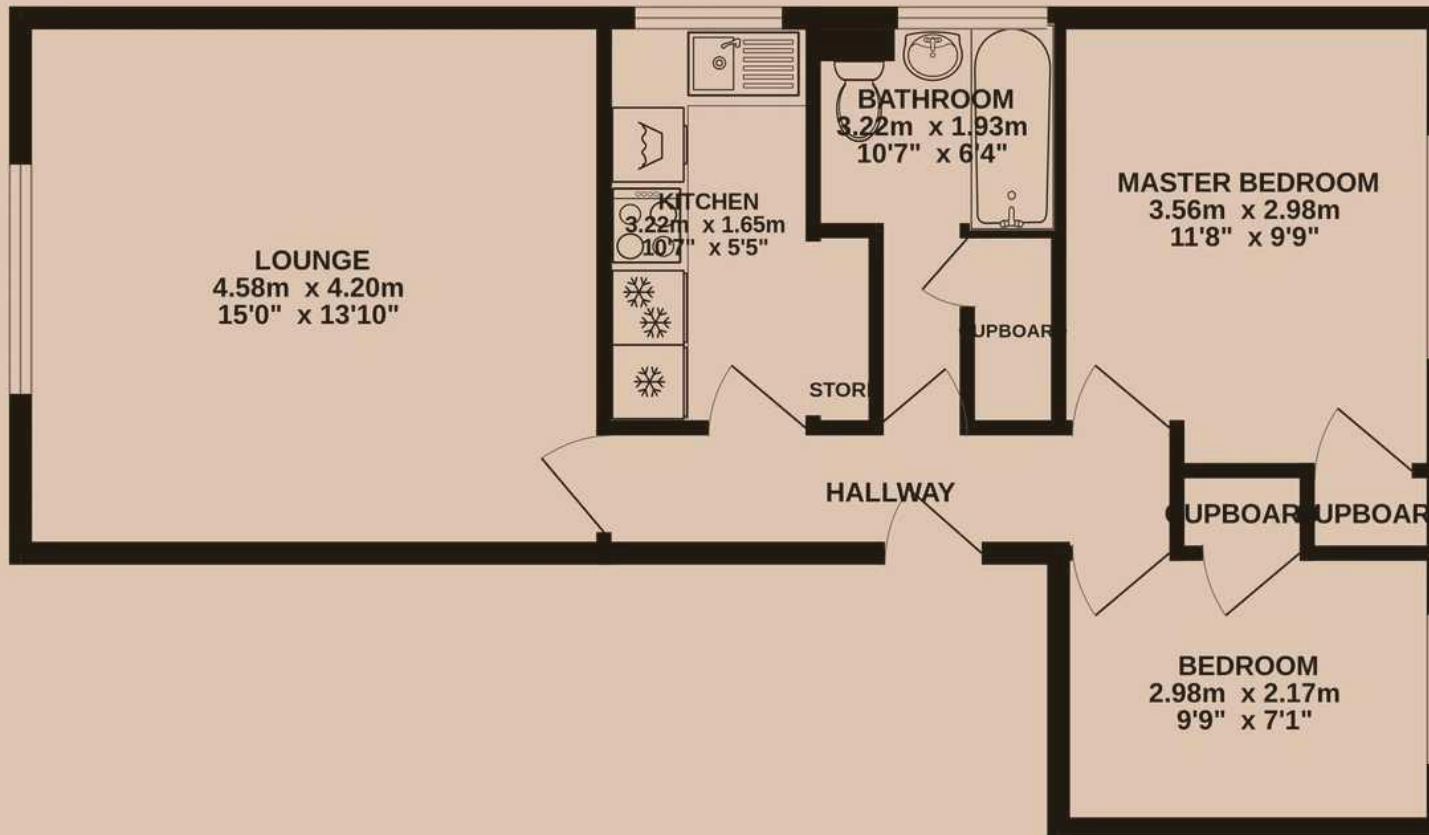
**Deposit**  
£950

**EPC**  
Ordered

**Council Tax Band**  
A

**ID**  
#19234

**Updated**  
10/04/2026



# *Have a property like this? Let's work together.*

Design and marketing are at the heart of our approach. With most people now looking for property online, we can get our clients' properties in front of as many people as the most prominent national agents. Where we differ is in the quality of our work. We create stunning digital particulars that highlight the individual attributes of every property we market, with videos and floor plans as standard.



**OUR OFFICE**  
7 Biggin Street  
Loughborough, LE11 1UA

**CONTACT US**  
01509 320 320  
let@huntleys.net

