



Cambridge Road North, W4 £795,000

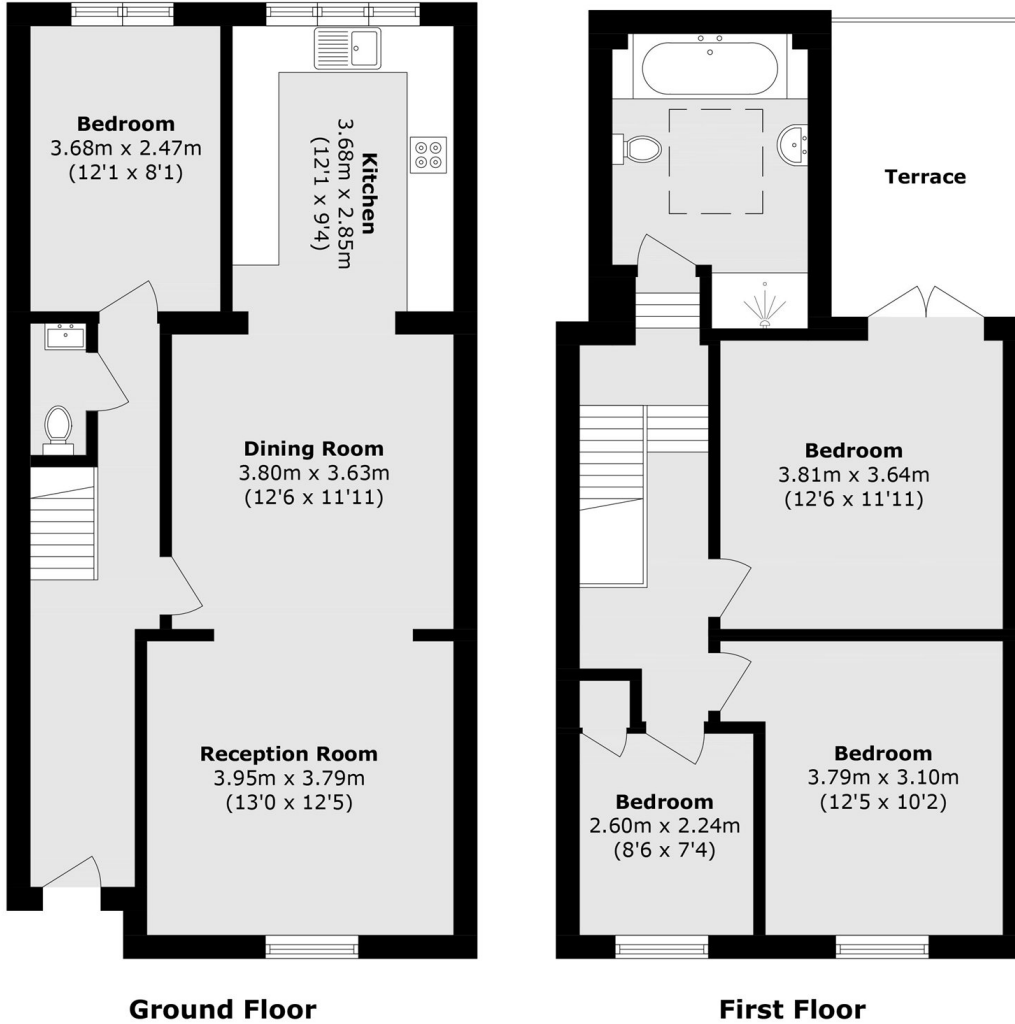
A well-presented four double bedroom, split-level maisonette on this well-positioned cul-de-sac. With share of freehold, private entrance and terrace and no onward chain.

Cambridge Road North is just off Chiswick High Road, moments from its excellent selection of cafés, restaurants and shops. Gunnersbury Station (District Line and Mildmay Line) is also within easy walking distance.

Features

- Maisonette
- Four Bedrooms
- Private Terrace
- Share Of Freehold
- Close To Transport
- No Onward Chain

Cambridge Road North, London, W4



Total area (approx): 114.5 sq. m (1232.4 sq. ft)
Terrace area (approx): 9.6 sq. m (103.3 sq. ft)