



## Cheyneys Avenue, HA8 £900,000

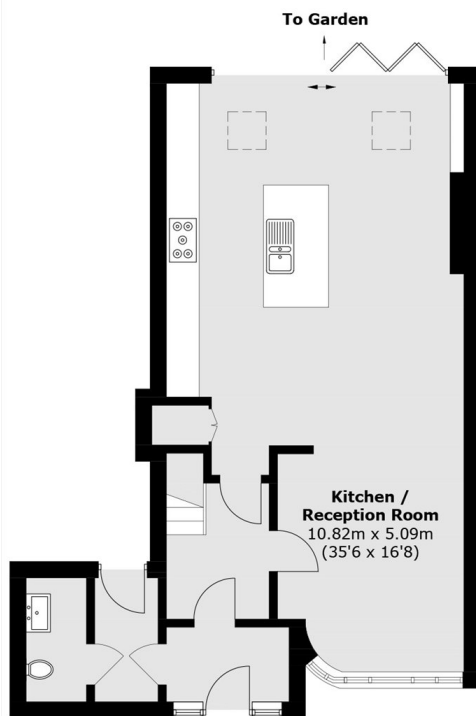
An excellent four bedroom semi-detached home located in the heart of Canons Park. This stunning house has recently had a large rear extension with bifolds. The house comes with two bathrooms, a triple driveway and separate garage.

Cheyneys Avenue is one of the most desirable roads in Canons Park. This home is very close to Canons Park and Stanmore Station (Jubilee Line).

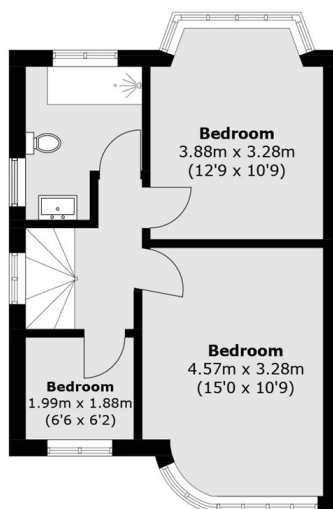
### Features

Semi-Detached  
Spacious Kitchen  
Double Driveway  
Four Bedrooms  
Separate Kitchen  
Superb Condition

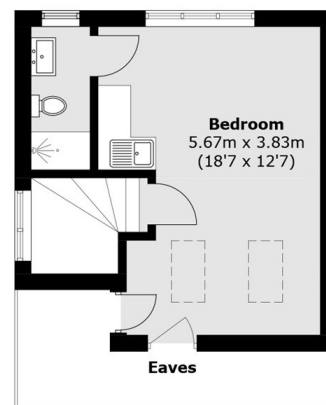
# Cheyneys Avenue, Canons Park, HA8



**Ground Floor**



**First Floor**



**Second Floor**

Total area (approx.): 136.9 sq. m (1,473.5 sq. ft)  
(Excluding Eaves)