

## Harrow Road, NW10

### £525,000

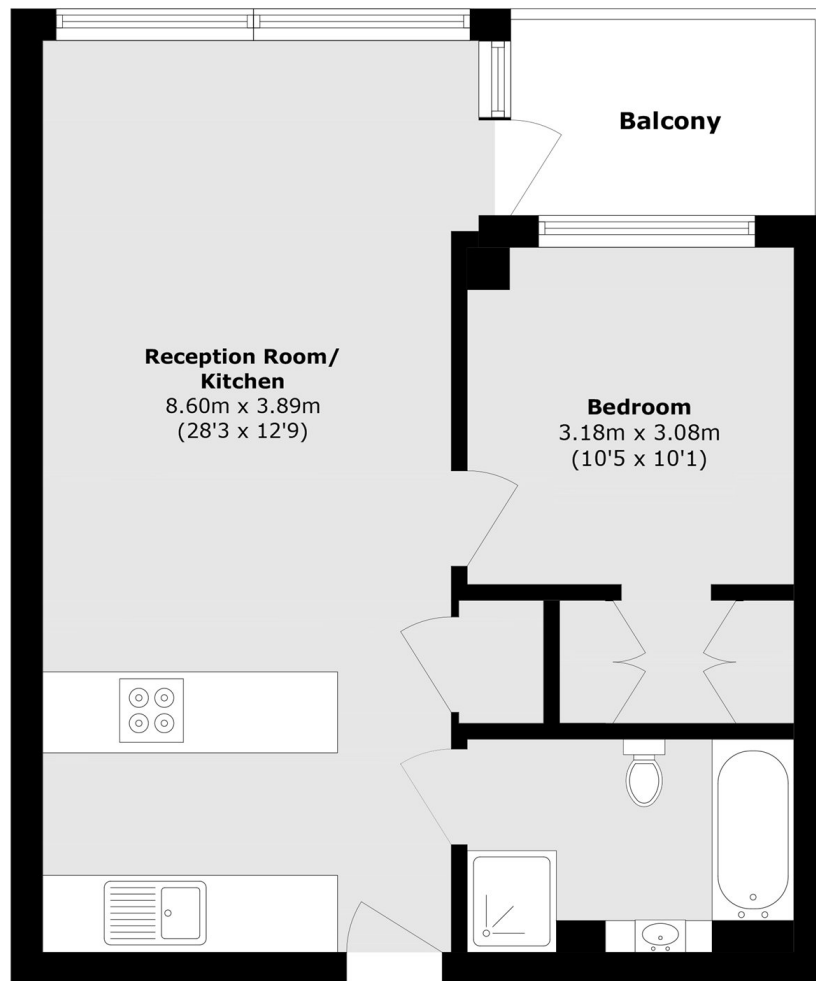
Set within a secure modern development is this one double bedroom second floor flat, with a south west facing balcony. The property is showcased with a high specification throughout, has an open plan kitchen and reception room, built-in storage, and is available chain-free.

Harrow Road links Kensal Rise with Maida Vale, Notting Hill and Paddington, with access to a host of cafes, shops, bars and restaurants, and close to the green open spaces of Queen's Park. Transport links include Kensal Rise (Overground), Kensal Green (Bakerloo & Overground) and Ladbroke Grove (Circle & Hammersmith and City).

### Features

- One Bedroom
- Open Plan Kitchen & Reception
- South West Facing Balcony
- Lift Access & Bike Storage
- Communal Courtyard Garden
- Chain-Free

# Harrow Road, London, NW10



Total area (approx.): 55.0 sq. m (592.0 sq. ft)

Balcony area (approx.): 5.3 sq. m (57.0 sq. ft)