



Kilburn Park Road, NW6

£500,000

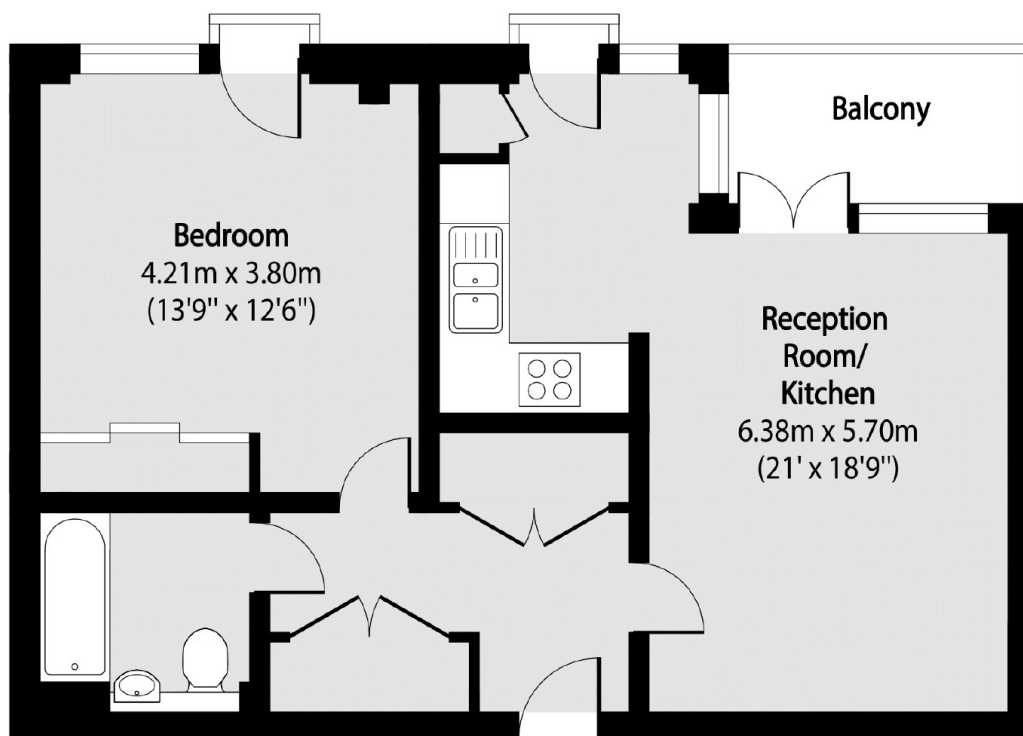
Situated on the top floor of a contemporary purpose-built development on Kilburn Park Road, this apartment benefits from the exclusive use of the fifth-floor hallway, providing an added sense of privacy and exclusivity rarely found in modern apartment living. The property features a bright and spacious semi-open-plan kitchen/reception room with doors opening onto a private balcony. The generous double bedroom includes built-in storage, while the apartment's elevated position offers a peaceful setting with natural light throughout.

Perfectly situated near to Paddington Recreation Ground, this location offers the serene ambiance of Maida Vale and Little Venice, along with the vibrant energy of Kilburn Park and Queens Park.

Features

- Top Floor
- EWS1 Compliant
- Lift & Security Fob Access
- Private Balcony
- Shared Communal Garden
- Chain Free

Kilburn Park Road, London, NW6



Total area (approx): 56.87 sq m (612 sq. ft)

Balcony total area (approx): 4.50 sq m (48 sq. ft)