

for sale

£270,000



## Stockwood Road CHIPPENHAM SN14 0RZ

A well-presented and extended two-bedroom end-terrace home situated on the popular western side of Chippenham, offering easy access to local amenities, schools and excellent commuter links. Lounge and large conservatory/family room to the Ground Floor.



# Stockwood Road CHIPPENHAM SN14 0RZ

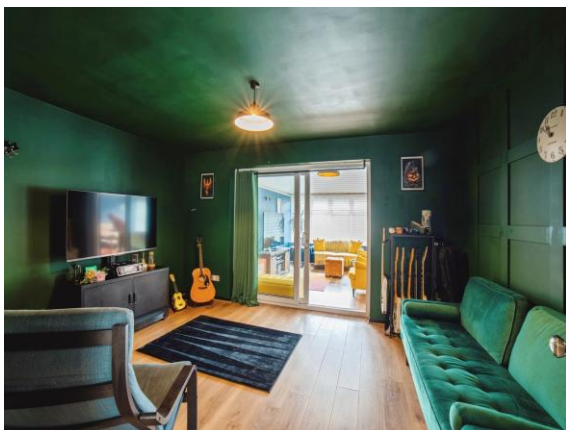
## Description

A well-presented and extended two-bedroom end-terrace home situated on the popular western side of Chippenham, offering easy access to local amenities, schools and excellent commuter links.

The accommodation is thoughtfully arranged over two floors and briefly comprises an entrance porch leading into a welcoming hallway, a comfortable sitting room, and a fitted kitchen. Of particular note is the impressive 21-foot conservatory, providing a bright and versatile additional living space overlooking the rear garden—ideal for dining, entertaining or relaxing.

To the first floor, the property offers two generously sized double bedrooms alongside a well-appointed shower room.

Externally, the front of the property has been adapted to provide off-road parking for two vehicles, while the rear benefits from a fully enclosed, low-maintenance garden laid mainly to patio, perfect for outdoor enjoyment with minimal upkeep.



## Ground Floor

### **Entrance Porch**

Entrance door to front. Door to Hallway

### **Hallway**

Stairs to First Floor.

### **Sitting Room**

Patio doors through to Family Room/Conservatory.

### **Kitchen**

Window to front. Door and window overlooking Family Room/Conservatory. Fitted with a matching range of base and wall units with complementary work surfaces over with inset sink and drainer. Part tiled walls. Space for range style cooker with cooker hood over. Plumbing for washing machine.

### **Family Room/Conservatory**

This stunning room offers plenty of space and light with sliding patio doors to the rear and windows overlooking the rear garden. Wood effect flooring. TV point.

## First Floor

### **Bedroom One**

Window to rear.

### **Bedroom Two**

Window to rear. Built in wardrobes.

## **Shower Room**

Two windows to front. Walk in shower cubicle. Low level WC and vanity wash hand basin. Heated towel rail.

## Outside

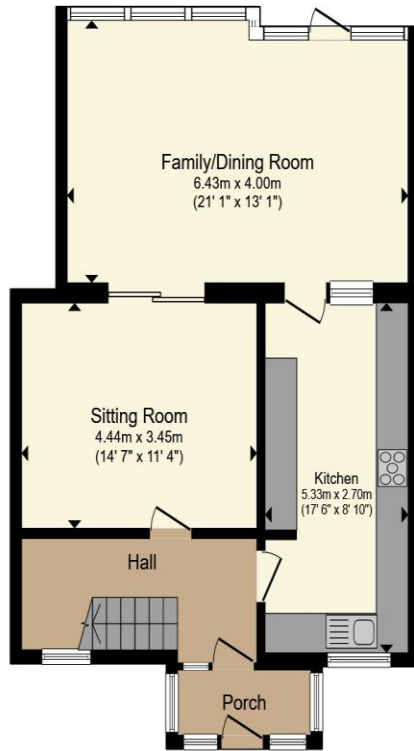
### **Front**

Allocated parking for two cars.

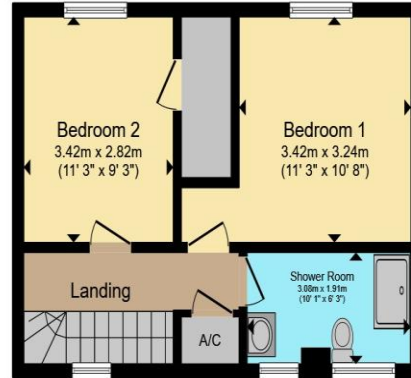
### **Rear Garden**

Fully enclosed. Low maintenance and laid to patio - ideal entertaining space.





**Ground Floor**



**First Floor**

Total floor area 107.2 m<sup>2</sup> (1,154 sq.ft.) approx

This floor plan is for illustrative purposes only. It is not drawn to scale. Any measurements, floor areas (including any total floor area), openings and orientation are approximate. No details are guaranteed, they cannot be relied upon for any purpose and they do not form part of any agreement. No liability is taken for any error, omission or misstatement. A party must rely upon its own inspection(s). Powered by www.propertybox.io



To view this property please contact Connells on

**T 01249 652 476**  
**E chippenham@connells.co.uk**

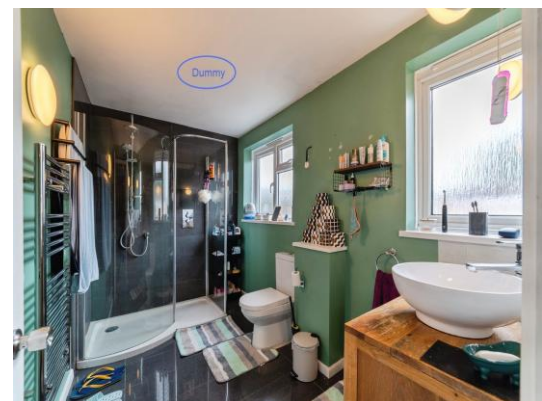
59 Market Place  
 CHIPPENHAM SN15 3HL

Property Ref: CHM306513 - 0003

Tenure:Freehold EPC Rating: C

Council Tax Band: B

**view this property online**  
**connells.co.uk/Property/CHM306513**



1. MONEY LAUNDERING REGULATIONS Intending purchasers will be asked to produce identification documentation at a later stage and we would ask for your co-operation in order that there will be no delay in agreeing the sale. 2. These particulars do not constitute part or all of an offer or contract. 3. The measurements indicated are supplied for guidance only and as such must be considered incorrect. Potential buyers are advised to recheck measurements before committing to any expense. 4. We have not tested any apparatus, equipment, fixtures, fittings or services and it is in the buyers interest to check the working condition of any appliances.

Connells Residential is registered in England and Wales under company number 1489613, Registered Office is Cumbria House, 16-20 Hockliffe Street, Leighton Buzzard, Bedfordshire, LU7 1GN. VAT Registration Number is 500 2481 05.

see all our properties at [www.connells.co.uk](http://www.connells.co.uk) | [www.rightmove.co.uk](http://www.rightmove.co.uk) | [www.zoopla.co.uk](http://www.zoopla.co.uk)