

## Heyford Avenue, SW8

£461 Per week

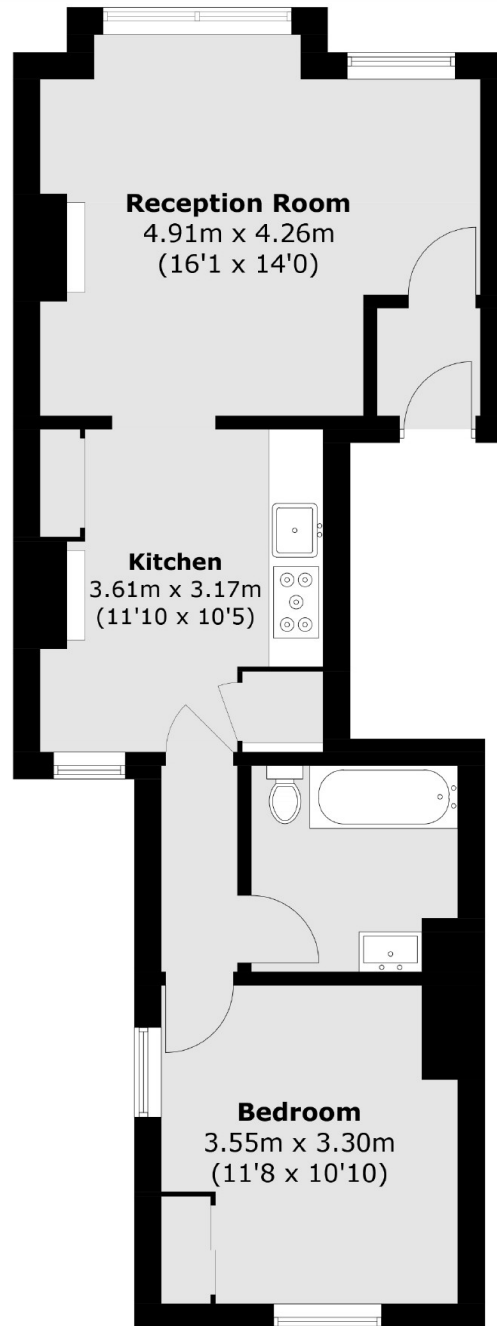
Located on Heyford Avenue, this one bedroom flat offers a large open plan reception/ kitchen room, a feature firewall and a modern bathroom. This is the perfect flat for a professional couple or a single person.

Heyford Avenue is a quiet residential street located in the heart of 'Little Portugal' which is ideally located for Vauxhall station (Victoria Line and National Rail).

### Features

- One Bedroom Flat
- Open Plan Reception
- Wooden Flooring
- Feature Firewall
- Close To Transport Links
- Prime Location

Heyford Avenue,  
London, SW8



Total area (approx.): 51.5 sq. m (554.3 sq. ft)