

**ROBERT
HALE
HOMES FOR
SALE**

6, Wheel Centre, Broad St.,
March, Cambs. PE15 8TX
MARCH

01354 652785

E-mail:
march@robert-hale-homes.co.uk

Website:
www.robert-hale-homes.co.uk

7 DAYS

WISBECH 465222

MARCH 652785

NAEA NETWORK

OVER 1000 OFFICES



**3B, GOLD STREET,
MARCH, PE15 8QE.**

THE PROPERTY

BEAUTIFULLY PRESENTED, CONSIDERABLY EXTENDED, THREE DOUBLE BEDROOMED MODERN DETACHED BUNGALOW IN A CUL-DE-SAC LOCATION WITH EASY ACCESS TO THE RAILWAY STATION
* FITTED KITCHEN WITH A WEALTH OF BUILT-IN APPLIANCES * MASTER BEDROOM WITH EN-SUITE DRESSING ROOM * SEPARATE DINING ROOM
* LOVELY ENCLOSED GARDENS TO REAR * MULTI-VEHICLE OFF ROAD PARKING TO BOTH SIDES OF THE BUNGALOW * GAS FIRED CENTRAL HEATING * DOUBLE GLAZING * A SUPERB BUNGALOW! * VIEW QUICKLY TO AVOID DISAPPOINTMENT

PRICE	£299,995	FREEHOLD	EPC BAND D
COUNCIL TAX	BAND B	FENLAND DISTRICT COUNCIL	REF. NO. M4932

SELLING? FREE, FREE, VALUATIONS!



For your own peace of mind, always have an independent survey,
and always test all systems and appliances!
Items displayed in photographs may not necessarily be included.



REF. NO. M4932

3B GOLD STREET, MARCH

HOW TO GET THERE

From our March office proceed along Dartford Road and into Wisbech Road. At the mini-roundabout turn right into Norwood Road and proceed. Continue over the railway crossing and take the next turning right proceed and Gold Street is the third turning on the left hand side.

THE ACCOMMODATION

(Dimensions given are approximate only).

ENTRANCE LOBBY/UTILITY 11'1"(max)x 4'(max) With tiled floor.

ENTRANCE HALL With laminate floor, built-in airing cupboard, built-in store cupboard, central heating thermostat.

LOUNGE 13'3"(max) x 11'10"(max) With French doors to rear garden, access to loft housing wall mounted gas fired combination boiler.

DINING ROOM 9'11"(max) x 9'8"(max) With laminate floor

INNER HALL With laminate floor.

FITTED KITCHEN 10'4"(max) x 9'10"(max) With tiled floor, preparation surfaces with drawers and cupboards under, built-in fridge/freezer, inset stainless steel 1½ bowl sink unit with mixer tap and cupboards under, space/plumbing for washing machine, space/plumbing for dishwasher, built-in gas hob, built-in hob hood, built-in electric oven, range of wall cupboards, wall cupboards with glazed door, part tiled walls.

BATHROOM/W.C./SHOWER ROOM With tiled floor, tiled and screened shower cubicle with thermostatic twin head shower, low level w.c., panelled bath with mixer tap and shower attachment, heated towel rail, cupboard with mirror door, tiled floor, tiled walls.

BEDROOM NO. 1 12'3"(max) x 11'11"(max) with bay window, archway leading to:

DRESSING ROOM 8'8"(max) x 5'7"(max) With full width built-in wardrobes/cupboards.

BEDROOM NO. 2 8'6"(max) x 8'5"(max) With laminate floor, access to loft.

BEDROOM NO. 3 9'5"(max) x 8'4"(max)

CLOAKROOM/W.C. With hand washbasin, low level w.c., tiled floor, tiled walls.

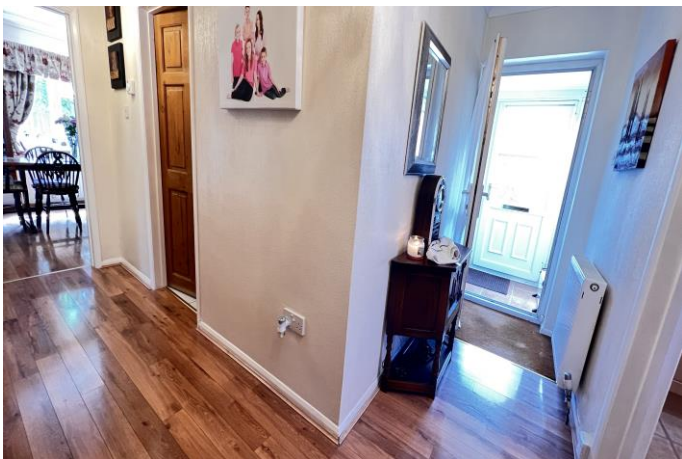
OUTSIDE COLD WATER TAP. OUTSIDE LIGHTS. EXTERNAL POWER POINTS.

GARDENS Gardens to front laid to lawn, with shrubs, bushes, and concrete driveway/off road parking space to each side of the bungalow.
Attractive enclosed gardens to rear, laid to lawn, with mature Magnolia tree, raised borders, shrubs, crazy paving patios, and an additional concrete multi-vehicle off road parking space.



REF. NO. M4932

3B GOLD STREET, MARCH



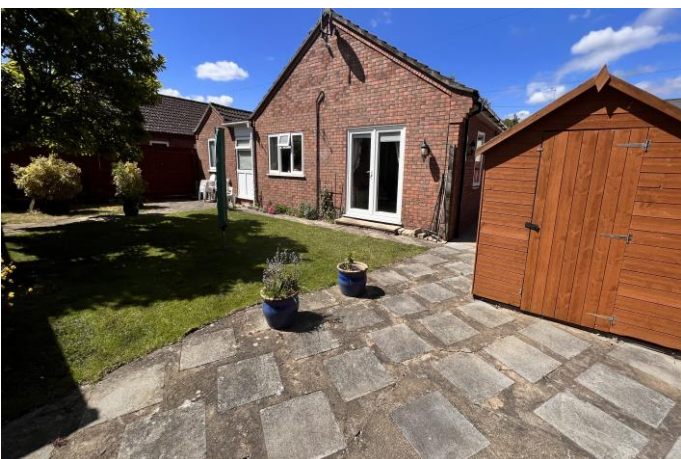
REF. NO. M4932

3B GOLD STREET, MARCH



REF. NO. M4932

3B GOLD STREET, MARCH



Gold Street

