



**Guide Price**  
**£650,000**

**Freehold**

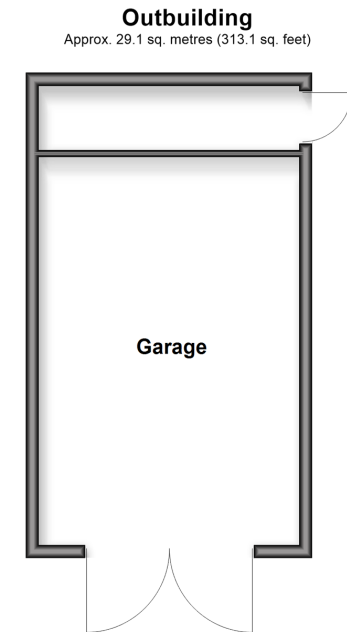
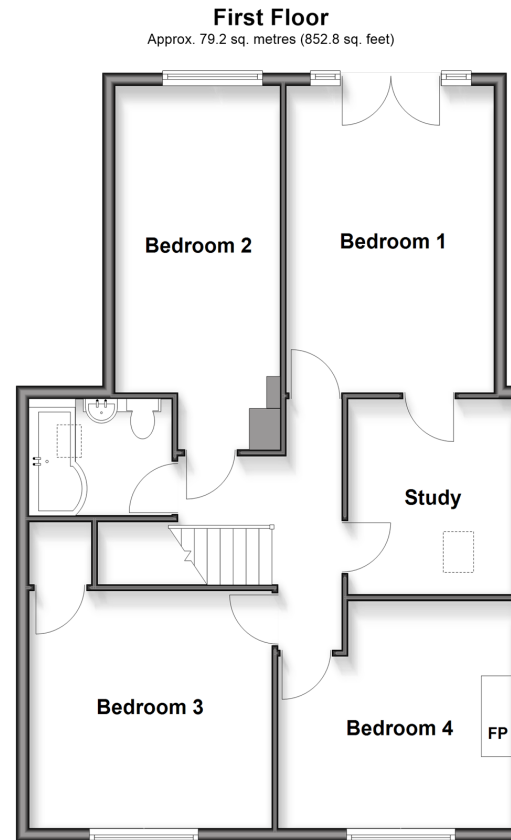
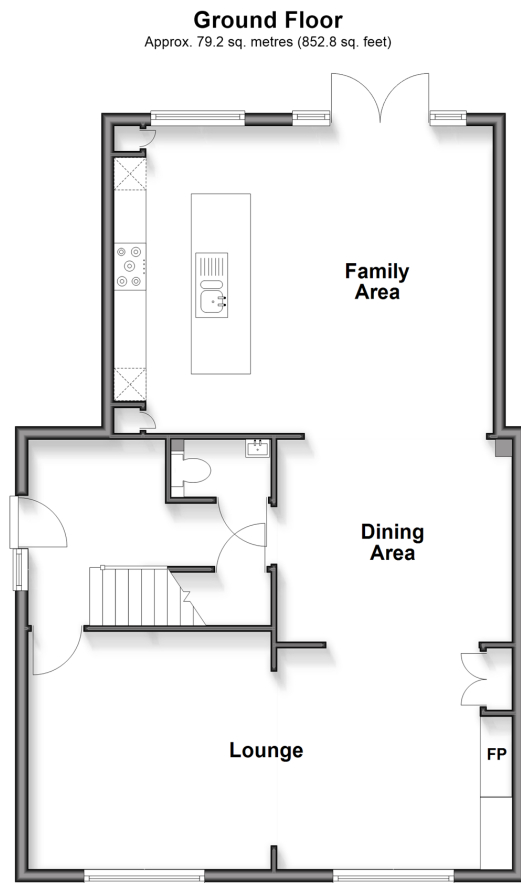
4x  2x  2x 

**Chapel Street, Ryarsh,  
West Malling, Kent,  
ME19**

**OVER 60?**

Secure this property  
for up to **59% less!**

*Wards*  
Helping you move forwards



## Accommodation

### GROUND FLOOR

Entrance Hall  
Cloakroom  
Lounge: 23'7 x 10'9 (7.19m x 3.28m)  
Dining Area: 11'8 x 9'9 (3.56m x 2.97m)  
Kitchen/Family Area: 20'2 x 15'4 (6.15m x 4.68m)

### FIRST FLOOR

Landing  
Bedroom 1: 15'3 x 11'0 (4.65m x 3.36m)  
Bedroom 2: 18'9 x 8'7 (5.72m x 2.62m)  
Bedroom 3: 12'11 x 11'6 (3.94m x 3.51m)  
Bedroom 4: 12'3 x 11'0 (3.74m x 3.36m)  
Study: 10'3 x 8'6 (3.13m x 2.59m)  
Bathroom

### OUTSIDE

Front & Rear Gardens  
Garage & Driveway



## Main features

- End of terrace house makes an ideal family home
- Stunning countryside views from the back bedrooms
- Set in the sought after village location of Ryarsh
- Recently had a double storey rear extension
- Multiple reception rooms & stunning new kitchen

### Nearest Schools

Primary Schools: Ryarsh Primary 0.0 miles, Offham Primary 1.4 miles, West Malling C of E Voluntary Controlled Primary and Language 1.4 miles  
Secondary Schools: Grange Park School 1.0 miles, Holmesdale Technology College 1.9 miles, The Malling

### Transport Information

Train Stations: West Malling 1.8 miles, Snodland 2.5 miles, New Hythe 2.6 miles

### Address

Chapel Street, Ryarsh, West Malling, Kent, ME19

### Directions

For directions to this property please contact us.



**Wards**  
Helping you move forwards

Call Kings Hill Branch 01732 22211 ■ [wardsofkent.co.uk](http://wardsofkent.co.uk)



- Legal advice should be taken to verify fixtures/fittings, planning, alterations and/or lease details
- Appliances & services are untested, dimensions are approximate and floor plans are not to scale
- Through a Homewise Home For Life Plan people aged 60+ can secure this property for up to 59% less, by purchasing a Lifetime Lease

EPC RATING

CURRENT:	POTENTIAL:
C(75)	B(82)

12405311/20260309/BC/WA