



Guide Price
£300,000

Leasehold

2x  1x  1x 

**Kingston Avenue, East
Horsley, Leatherhead,
Surrey, KT24**

OVER 60?

Secure this property
for up to **59% less!**

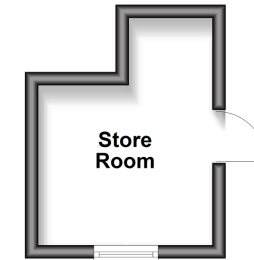
cubitt & west
Helping you move forwards



Main features

- Bright, airy spacious living space
- Private entrance with stairs leading to first floor
- Village location within walking distance to train station and shops
- Private rear garden
- Ample on-street parking

Ground Floor
Approx. 7.7 sq. metres (83.4 sq. feet)



Accommodation

GROUND FLOOR

Store Room: 11'1 x 8'6 (3.38m x 2.59m)

FIRST FLOOR

Landing

Lounge: 14'2 x 12'2 (4.32m x 3.71m)

Kitchen: 9'2 x 7'4 (2.80m x 2.24m)

Bedroom 1: 13'7 x 9'9 (4.14m x 2.97m)

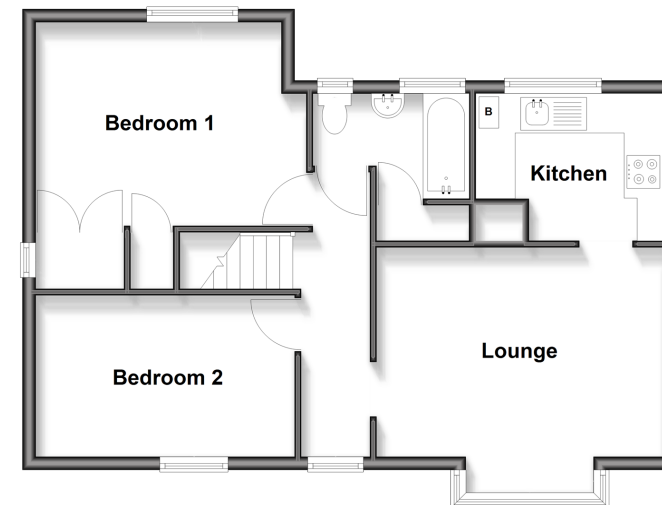
Bedroom 2: 12'9 x 7'9 (3.89m x 2.36m)

Bathroom

OUTSIDE

Rear Garden

First Floor
Approx. 57.8 sq. metres (622.6 sq. feet)



Call Leatherhead - 01372 373780 ■ CubittAndWest.Co.Uk

- Legal advice should be taken to verify fixtures/fittings, planning, alterations and/or lease details
- Appliances & services are untested, dimensions are approximate and floor plans are not to scale
- Through a Homewise Home For Life Plan people aged 60+ can secure this property for up to 50% less, by purchasing a Lifetime Lease.



21108385/20250929/MB1/JL