

MALLARD

Chelverton Road, SW15

Mallardestateagents.co.uk | 0207 3842228

A stylish one
bedroom Victorian
apartment in the
heart of Putney.

Chelverton Road, SW15

£335,000 | 516 sq ft



Natural light pours through a series of striking sash windows, enhancing the sense of volume throughout the principal living space.



Chelverton Road, SW15

Positioned on the first floor of an attractive period conversion in the heart of Putney, this beautifully presented one bedroom apartment extends to approximately 516 sq ft, combining elegant proportions with a clean, contemporary finish.





Generous in scale, the reception room centres around a beautiful original fireplace, with high ceilings and warm timber flooring adding both character and texture.

Chelverton Road, SW15

Set within an attractive period building on Chelverton Road, this beautifully presented first floor apartment offers a refined balance of character and simplicity in one of Putney's most convenient locations.

The interiors have been thoughtfully updated, pairing clean contemporary finishes with original architectural detail.

A generously proportioned reception room forms the heart of the home, where tall sash windows draw in exceptional natural light throughout the day.

The open layout creates an easy sense of flow between the living and kitchen spaces, while the original fireplace introduces warmth and texture against a more minimal backdrop.

EPC Rating
D

Council Tax Band
C

Leashold Details

Leasehold 168 years remaining
Ground rent £125 per annum
No service charge ad hoc charges



Chelverton Road, SW15



To the rear of the apartment, the bedroom is quietly positioned away from the street, with soft neutral tones. A modern shower room sits adjacent, finished in a simple, understated palette. Thoughtfully curated throughout, the apartment balances period detail with a more contemporary sensibility, resulting in a home that feels both stylish and effortlessly liveable.

Features

A wonderfully bright first floor apartment with large sash windows and elevated outlooks, allowing natural light to pour throughout the principal living space.

Beautifully proportioned with high ceilings, warm timber flooring and a striking original fireplace, creating a sociable and thoughtfully balanced interior.

Ideally located moments from Putney Mainline Station, the embankment and an excellent selection of cafés, restaurants and independent local amenities.

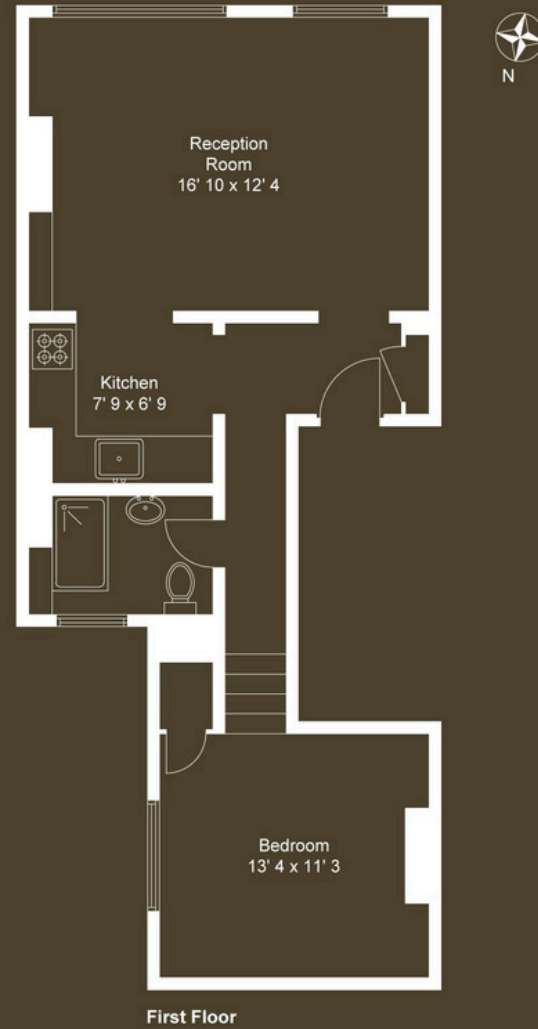
Chelverton Road, SW15



Chelverton Road, SW15

Floor plan

First floor total sq ft 516/47.9 sq m



Chelverton Road

Approximate Gross Internal Area = 516 sq ft / 47.9 sq m

Chelverton Road, SW15

Chelverton Road is superbly positioned for central Putney living, moments from an excellent selection of cafés, restaurants and independent shops, while Putney Mainline Station and East Putney Underground are both within easy reach. The Thames, Putney Embankment and green open spaces of Wandsworth Park are also nearby.

A stylish and carefully composed first floor apartment, combining beautiful natural light, elegant period detail and a superb central Putney setting — ideally suited to a first-time buyer.



Book a viewing

+44 (0) 20 7255 3208
hello@mallardstateagents.co.uk



MALLARD

The art of coming home.