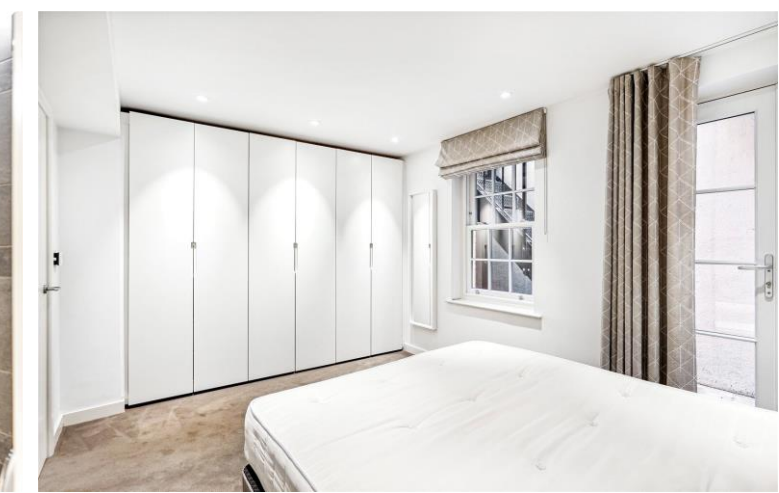




Radnor Walk
London, SW3

CHESTERTONS





A well presented, neutral, one bedroom apartment. The apartment benefits from a modern open plan kitchen, good storage through out and a good size bedroom.

- Modern
- One bedroom
- Prime location
- Professionally managed
- Wooden floors
- Furnished

£2,925 pcm

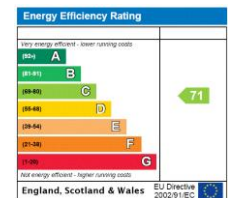
Additional tenant charges apply (fees apply to non-AST tenancies only)

Tenancy Agreement Fee: £300

References per Tenant/Guarantor: £60

Inventory check (approx. £100 – £250 inc. VAT)

chestertons.co.uk/property-to-rent/applicable-fees



Minimum Term: 12 months
Deposit Required: £3,375.00
Local Authority: Royal Borough of Kensington & Chelsea
Council Tax Band: D
EPC Rating: C
Furnished

Chestertons Chelsea Lettings

17 Cale Street

London

SW3 3QR

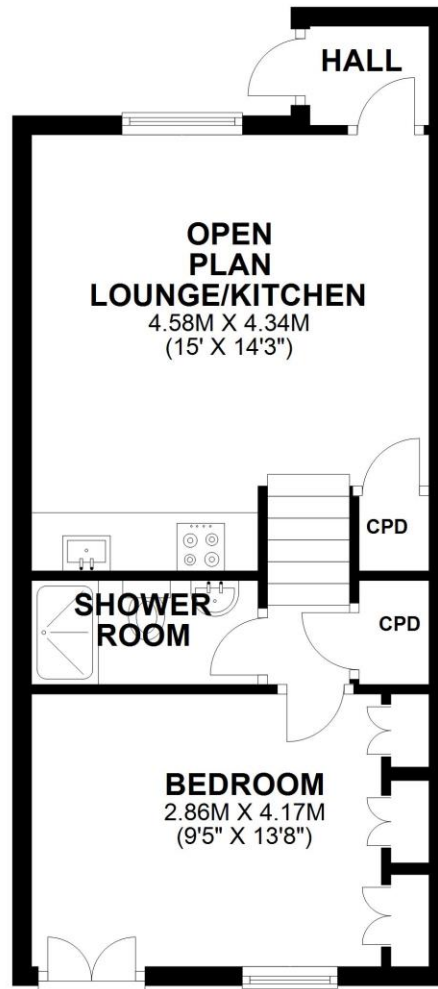
chelsea@chestertons.co.uk

02075944750

chestertons.co.uk

BASEMENT

APPROX. 37.8 SQ. METRES (406.8 SQ. FEET)



TOTAL AREA: APPROX. 37.8 SQ. METRES (406.8 SQ. FEET)

Chesterton Global Ltd trading as Chestertons for themselves and for the vendor of this property whose agents they are, give notice that (i) these particulars do not constitute any part of an offer or contract, (ii) all statements contained within these particulars are made without responsibility on the part of Chestertons or the vendor, (iii) whilst made in good faith, none of the statements contained within these particulars are to be relied upon as a statement or representation of fact, (iv) any intending purchasers must satisfy themselves by inspection or otherwise as to the correctness of each of the statements contained within these particulars, (v) the vendor does not make or give either Chestertons or any person in their employment any authority to make or give representation or warranty whatsoever in relation to this property. Wide angle lenses may be used. ©Copyright Chestertons | Chesterton Global Ltd | Registered Office 40 Connaught Street, Hyde Park, London W2 2AB Registered Company Number 05334580.



This paper is
100% recyclable