



3 Bed House - Semi-Detached

12 Derwent Avenue, Milford, Belper DE56 0RB

Offers Around £289,950 Freehold



3



2



1



E

**Fletcher
& Company**

www.fletcherandcompany.co.uk

- Highly Appealing Traditional Semi-Detached Home - NO CHAIN
- Popular Cul-de-Sac Location - Countryside Views - Requires Modernisation
- Potential To Be Improved - Scope For Extension/Loft Conversion (STP)
- Gas Central Heating & Double Glazing
- Lounge, Dining Room, Kitchen
- Three Bedrooms & Family Bathroom
- South Facing Garden with Countryside Views
- Driveway & Carport
- Workshop & Two Timber Sheds
- No Chain Involved - Extremely Unique Opportunity - Great Transport Links

TRADITIONAL BAY FRONTED PROPERTY & COUNTRYSIDE VIEWS - A three bedroom semi detached property with potential to be improved, occupying popular cul-de-sac location with easy access to Duffield and Belper.

The Location

The historic village of Milford has an excellent range of amenities available locally. The City of Derby is approximately seven miles to the South providing a superb range of facilities including leisure centres, schools at all levels and the Derbion shopping centre.

The market town of Belper is approximately one miles away and offers a broad range of facilities including a supermarket and a range of quality delis and restaurants. Milford is also noted for its village inns, reputable primary school and is also one mile away from the village of Duffield, again offering a good range of amenities including a railway station.

This superb location offers fast access to the A6 and A38 leading to the M1 motorway and is also in the Derbyshire countryside with the River Derwent providing some delightful country walks.

Accommodation

Ground Floor

Entrance Hall

14'11" x 3'4" (4.56 x 1.04)

With entrance door, radiator, deep skirting boards and architraves, high ceiling, inset doormat and staircase leading to first floor.



Understairs Storage Cupboard

7'3" x 2'10" (2.22 x 0.88)

With window and internal panelled door.

Lounge

13'8" x 11'5" (4.19 x 3.49)

With chimney breast with characterful fireplace and raised tile hearth, deep skirting boards and architraves, high ceiling, radiator, double glazed bay window to front, internal double opening doors giving access to dining room and internal panelled door.



Dining Room

11'11" x 11'5" (3.64 x 3.49)

With chimney breast with characterful fireplace and raised quarry tiled hearth, deep skirting boards and architraves, high ceiling, radiator, double glazed window, countryside views to rear, internal double opening doors giving access to lounge and internal panelled door.



Kitchen

8'3" x 6'5" (2.53 x 1.96)

With one and a half sink unit with mixer tap, wall and base cupboards, worktop, built-in gas hob, built-in electric oven, plumbing for automatic washing machine, countryside views to rear, double glazed window, radiator and double glazed door giving access to side.



First Floor Landing

8'7" x 3'4" (2.62 x 1.04)

With double glazed window to side and access to roof space (potential for loft conversion subject to planning permission).



Bedroom One

11'10" x 11'3" (3.62 x 3.44)

With chimney breast with display cast iron period style fireplace with tiled hearth, high ceiling, radiator, countryside views to rear, double glazed window and internal panelled door.



Bedroom Two

11'4" x 11'5" (3.47 x 3.48)

With chimney breast with decorative cast iron period style fireplace with tiled hearth, high ceiling, radiator, double glazed window to front and internal panelled door.



Bedroom Three

7'0" x 6'3" (2.15 x 1.91)

With high ceiling, double glazed window to front and internal panelled door.



Bathroom

7'3" x 6'5" (2.23 x 1.97)

With bath with electric shower over, pedestal wash handbasin, low level WC, tile splashbacks, radiator, high ceiling, double glazed window to rear and internal panelled door.



Roof Space

23'7" x 18'5" (7.20 x 5.62)

Accessed via an aluminium loft ladder, boards for storage, light and potential loft conversion (subject to planning permission).

Front Garden

The property is set back from the pavement edge behind a gravelled fore-garden which could also be used for extra car parking space.

Rear Garden

Being of a major asset to the sale of this particular property is its south facing, enclosed rear garden backing onto open fields and countryside. The garden is mainly laid to lawn the varied selection of shrubs, plants, sun patio, fencing and stone walling.



Boiler Store

5'11" x 3'6" (1.82 x 1.09)

With central heating boiler.



Workshop

17'3" x 8.04" (5.26m x 2.44m.1.22m)

With power and lighting.



Timber Garden Shed One

7'5" x 5'4" (2.26m x 1.63m)



Timber Garden Shed Two

7'6" x 5'3" (2.29m x 1.60m)

Driveway

The property benefits from off-road car parking for several cars.



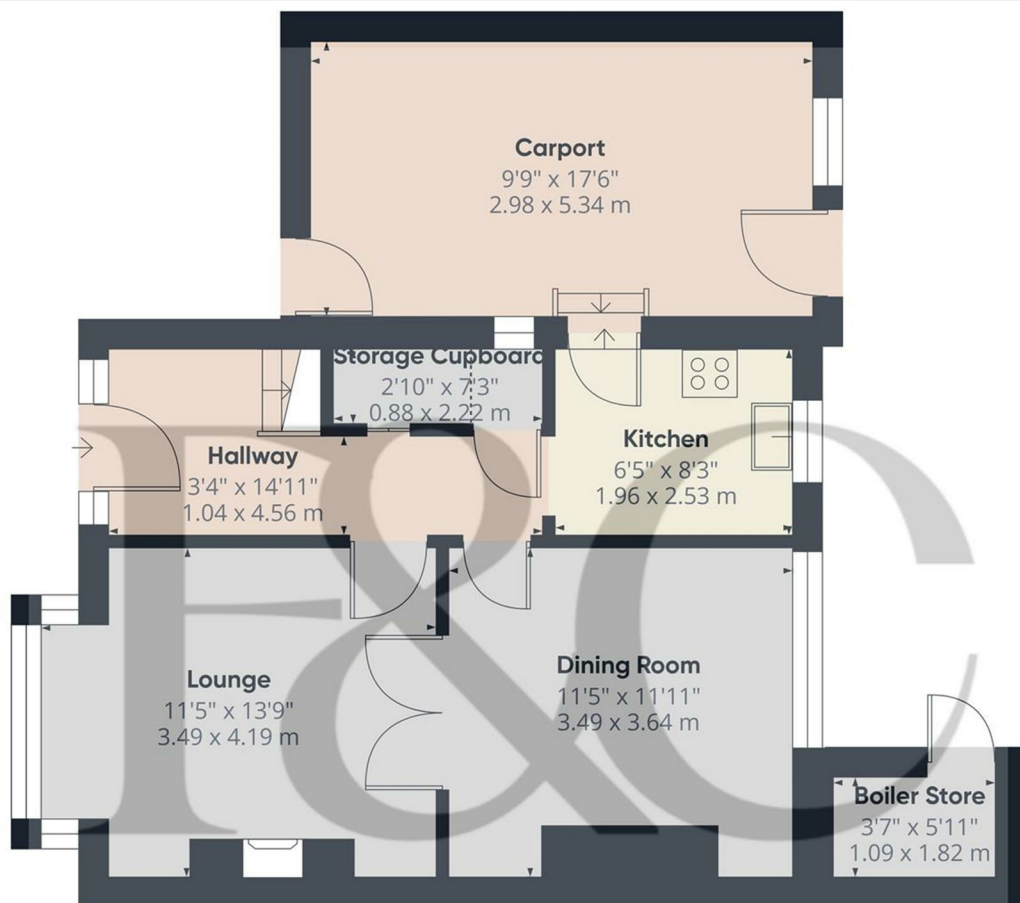
Carport

17'6" x 9'9" (5.34 x 2.98)



Council Tax Band - B
Amber Valley





Floor 0

Approximate total area⁽¹⁾

621 ft²
57.7 m²

Reduced headroom

21 ft²
2 m²

(1) Excluding balconies and terraces

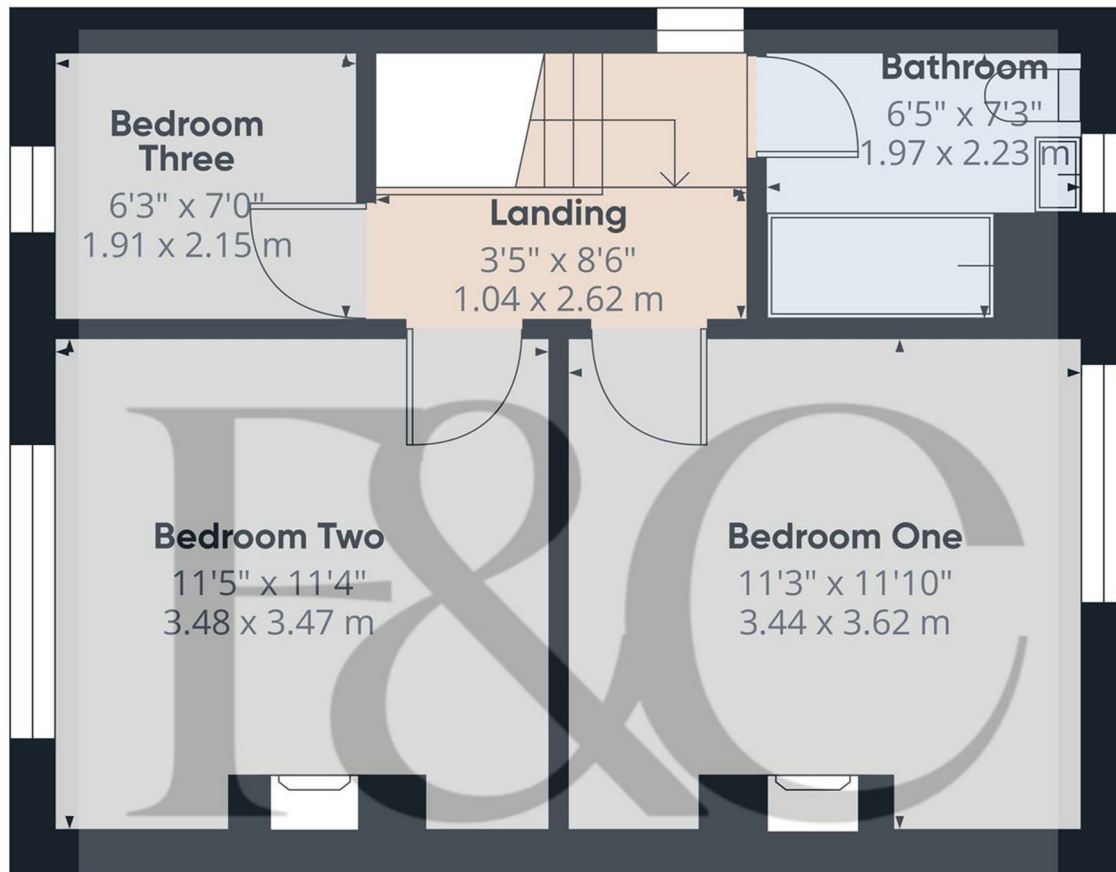
Reduced headroom

Below 5 ft/1.5 m

Calculations reference the RICS IPMS 3C standard. Measurements are approximate and not to scale. This floor plan is intended for illustration only.

GIRAFFE360

These particulars do not constitute an offer or a contract neither do they form part of an offer or contract. The vendor does not make or give and Messrs. Fletcher & Company nor any person employed has any authority to make or give any representation or warranty, written or oral, in relation to this property. Whilst we endeavour to make our sales details accurate and reliable, if there is any point which is of particular importance to you, please contact the office and we will be pleased to check the information for you, particularly if contemplating travelling some distance to view the property. None of the services or appliances to the property have been tested and any prospective purchasers should satisfy themselves as to their adequacy prior to committing themselves to purchase.



Floor 1

Approximate total areaⁱⁱⁱ
377 ft²
35.1 m²

(1) Excluding balconies and terraces

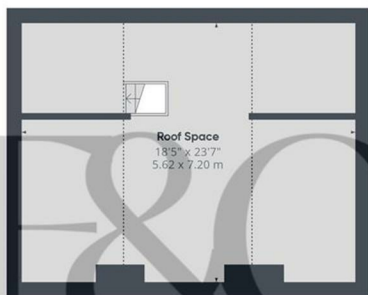
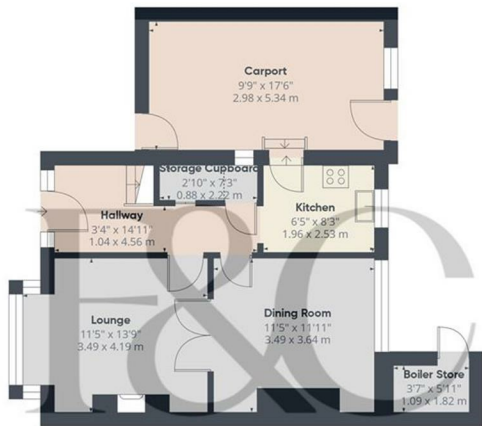
Calculations reference the RICS IPMS 3C standard. Measurements are approximate and not to scale. This floor plan is intended for illustration only.

GIRAFFE360

These particulars do not constitute an offer or a contract neither do they form part of an offer or contract. The vendor does not make or give and Messrs. Fletcher & Company nor any person employed has any authority to make or give any representation or warranty, written or oral, in relation to this property. Whilst we endeavour to make our sales details accurate and reliable, if there is any point which is of particular importance to you, please contact the office and we will be pleased to check the information for you, particularly if contemplating travelling some distance to view the property. None of the services or appliances to the property have been tested and any prospective purchasers should satisfy themselves as to their adequacy prior to committing themselves to purchase.



These particulars do not constitute an offer or a contract neither do they form part of an offer or contract. The vendor does not make or give and Messrs. Fletcher & Company nor any person employed has any authority to make or give any representation or warranty, written or oral, in relation to this property. Whilst we endeavour to make our sales details accurate and reliable, if there is any point which is of particular importance to you, please contact the office and we will be pleased to check the information for you, particularly if contemplating travelling some distance to view the property. None of the services or appliances to the property have been tested and any prospective purchasers should satisfy themselves as to their adequacy prior to committing themselves to purchase.



Approximate total area⁽¹⁾
1415 ft²
131.5 m²

Reduced headroom
274 ft²
25.4 m²

(1) Excluding balconies and terraces

Reduced headroom
Below 5 ft/1.5 m

Calculations reference the RICS IPMS 3C standard. Measurements are approximate and not to scale. This floor plan is intended for illustration only.

GIRAFFE360

Energy Efficiency Rating

	Current	Potential
Very energy efficient - lower running costs		
(92 plus) A		
(81-91) B		
(69-80) C		
(55-68) D		
(39-54) E		
(21-38) F		
(1-20) G		
Not energy efficient - higher running costs		
England & Wales	EU Directive 2002/91/EC	

Environmental Impact (CO₂) Rating

	Current	Potential
Very environmentally friendly - lower CO ₂ emissions		
(92 plus) A		
(81-91) B		
(69-80) C		
(55-68) D		
(39-54) E		
(21-38) F		
(1-20) G		
Not environmentally friendly - higher CO ₂ emissions		
England & Wales	EU Directive 2002/91/EC	

These particulars do not constitute an offer or a contract neither do they form part of an offer or contract. The vendor does not make or give and Messrs. Fletcher & Company nor any person employed has any authority to make or give any representation or warranty, written or oral, in relation to this property. Whilst we endeavour to make our sales details accurate and reliable, if there is any point which is of particular importance to you, please contact the office and we will be pleased to check the information for you, particularly if contemplating travelling some distance to view the property. None of the services or appliances to the property have been tested and any prospective purchasers should satisfy themselves as to their adequacy prior to committing themselves to purchase.