



Castles

OFFERS IN EXCESS OF

£439,950

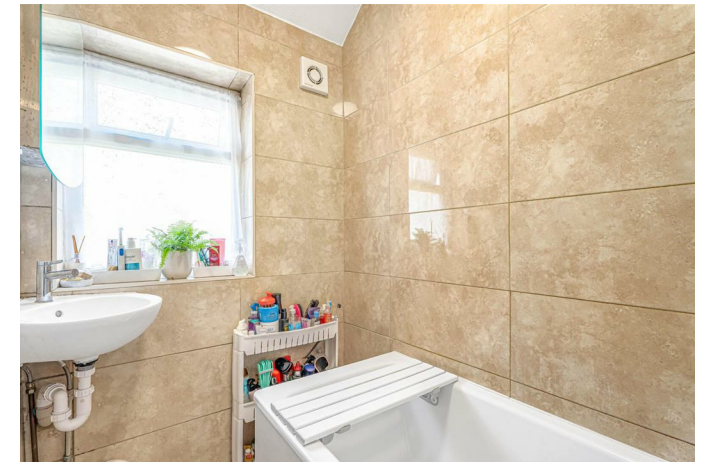
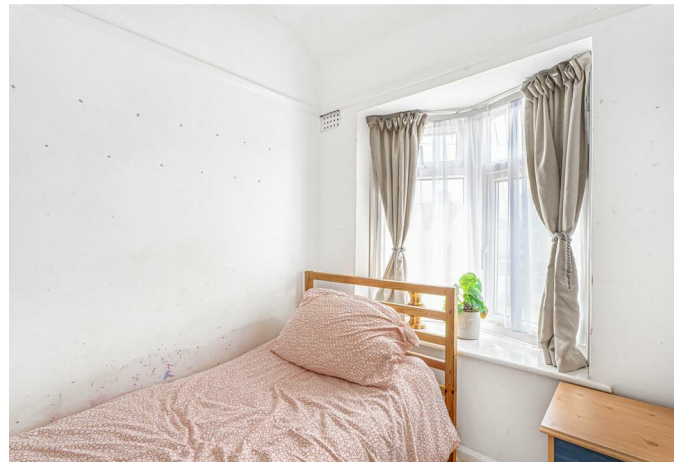
Rugby Avenue

London, N9 9ER

PROPERTY SUMMARY

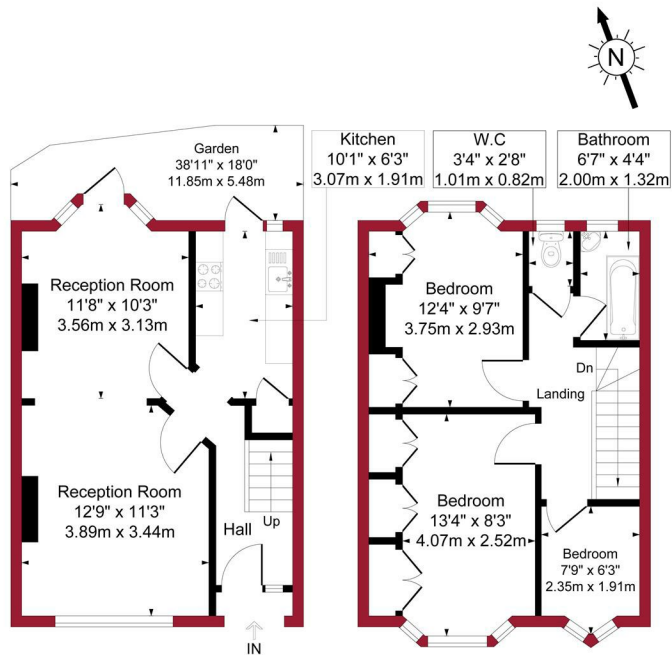
A three bedroom 1930's Terraced property situated on the popular Latymer Road Estate N9. The property comprises of two Receptions and kitchen to ground floor with a further Three bedrooms and bathroom to first floor. It also has features to include, 38ft rear garden, off street parking, double glazing and gas central heating. View early to avoid disappointment.





Rugby Avenue, London, N9

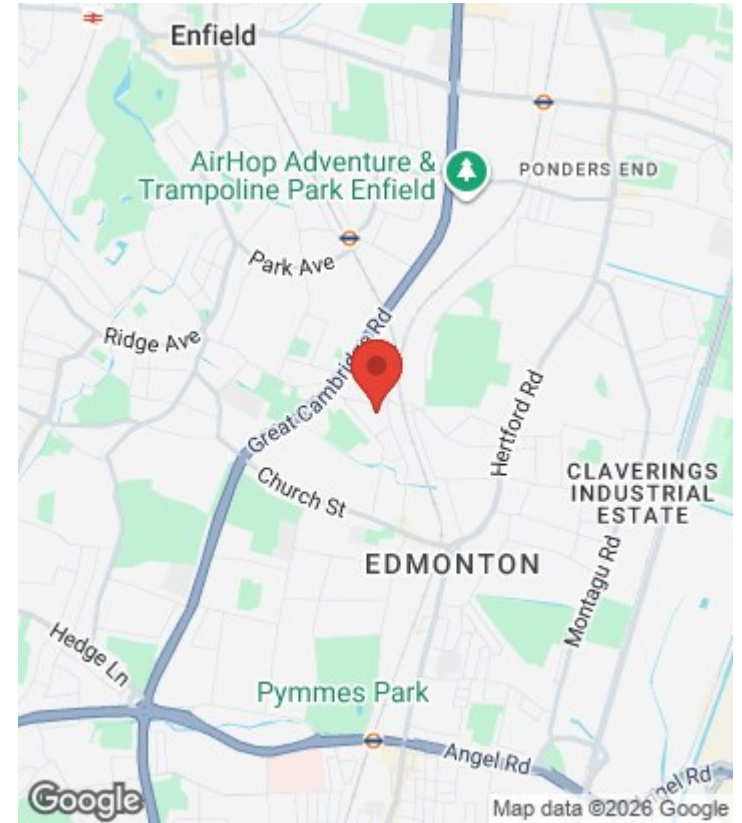
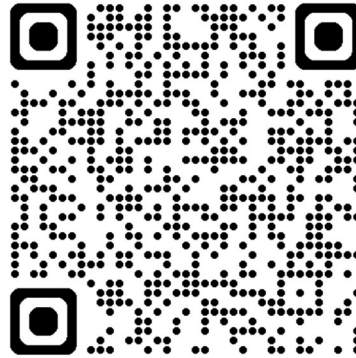
Approximate Gross Internal Area = 777 sq ft / 72.1 sq m



Ground Floor
Gross Internal
Floor Area 385 sq ft / 35.7 sq m

First Floor
Gross Internal
Floor Area 392 sq ft / 36.4 sq m

For a guide to the area please scan this code for more information



House - Terraced
Freehold
Council: Enfield
Council Tax Band: D

Agents Note: Whilst every care has been taken to prepare these particulars, they are for guidance purposes only. All measurements are approximate and are for general guidance purposes only and whilst every care has been taken to ensure their accuracy, they should not be relied upon and potential buyers/tenants are advised to recheck the measurements



OFFICE ADDRESS

438 Hertford Road
Edmonton
London
N9 8AB

OFFICE DETAILS

020 8804 8123
edmonton@castles.london
<https://www.castles.london/>

