



OAKFIELD



Marina, St. Leonards-On-Sea, TN38 0BJ

Price Guide £220,000



Marina, St. Leonards-On-Sea, TN38 0BJ

A well-presented two-bedroom apartment ideally situated in the sought-after Marina area of St Leonards-on-Sea, enjoying attractive sea views and a convenient position close to a wide range of local amenities.

The accommodation offers bright and spacious open-plan living, creating a sociable and versatile space for both relaxing and entertaining. The fitted kitchen flows seamlessly into the living area, while the property further benefits from two well-proportioned bedrooms and a modern bathroom fitted with a bath and shower over.

Additional features include double glazing throughout and a highly convenient location within easy reach of local shops, cafes, restaurants, bus routes, and the seafront promenade.

St Leonards-on-Sea is a vibrant and increasingly popular coastal town renowned for its stunning seafront, independent boutiques, thriving café culture, and excellent transport links. The area offers a blend of Victorian architecture, cultural attractions, and everyday conveniences, with regular rail services providing direct connections to London and the surrounding areas. The nearby seafront and promenade offer beautiful coastal walks, whilst Hastings town centre is just a short distance away, providing an extensive range of shopping, leisure, and recreational facilities.

An excellent opportunity for first-time buyers, investors, or those seeking a coastal home in a desirable seaside location.





Living Room

18'1" x 10'6" (5.51m x 3.20m)

Kitchen

11'4" x 7'8" (3.45m x 2.34m)

Bedroom One

12'11" x 7'9" (3.94m x 2.36m)

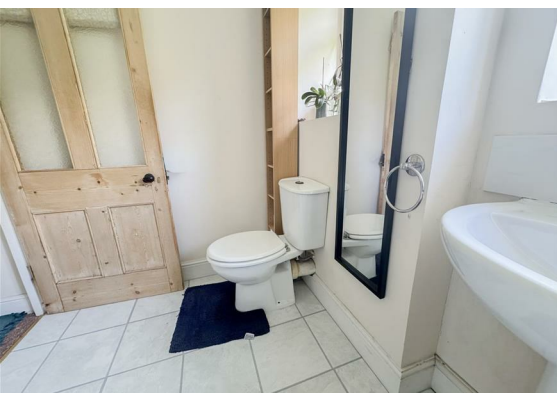
Bedroom Two

12'1" x 7'8" (3.68m x 2.34m)

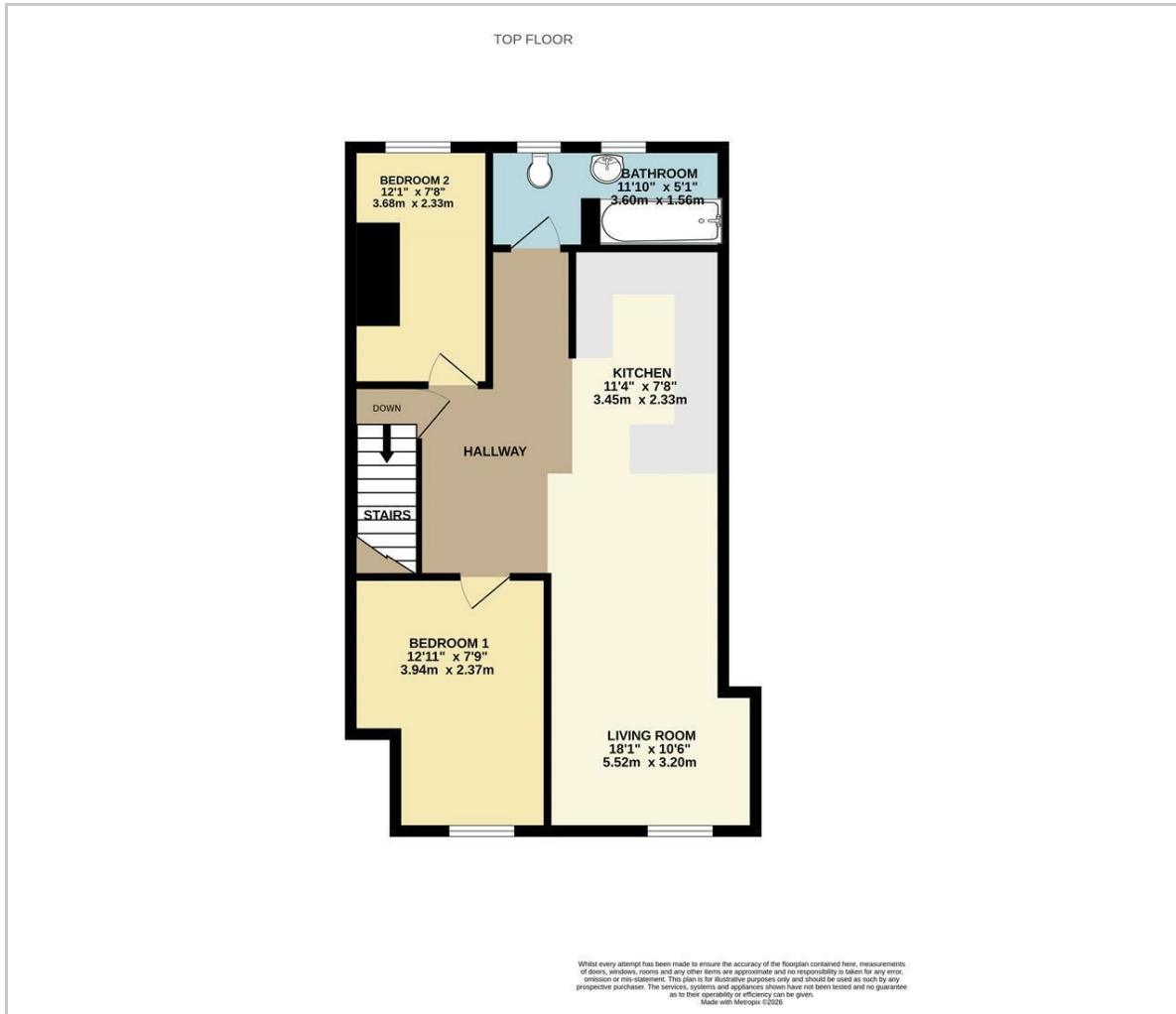
Bathroom

11'10" x 5'1" (3.61m x 1.55m)

Council Tax Band A - £1,784.39 Per Annum



Floor Plan



Viewing

Please contact us on 01424 224700 if you wish to arrange a viewing appointment for this property or require further information.

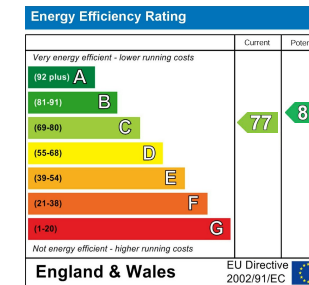
These particulars, whilst believed to be accurate are set out as a general outline only for guidance and do not constitute any part of an offer or contract. Intending purchasers should not rely on them as statements of representation of fact, but must satisfy themselves by inspection or otherwise as to their accuracy. No person in this firm's employment has the authority to make or give any representation or warranty in respect of the property.

12 Sackville Road, Bexhill on sea, East Sussex, TN39 3JL
 Bexhill@oakfieldproperty.co.uk

Area Map



Energy Efficiency Graph



01424 224700
 www.oakfieldproperty.co.uk