



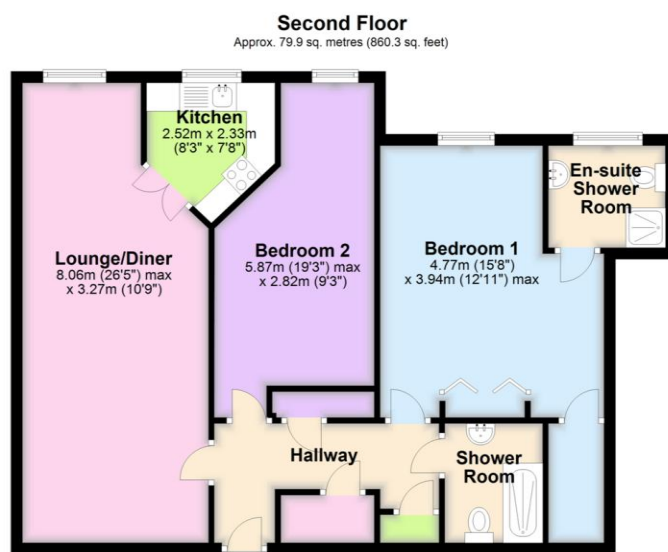
**21 Grosvenor Court**  
**Western Road, Ivybridge**  
**Devon**  
**PL21 9GH**

**Guide Price £199,950**

  
MILLINGTON TUNNICLIFF

**21 Grosvenor Court  
Western Road  
Ivybridge  
Devon  
PL21 9GH**

## FLOORPLAN



Total area: approx. 79.9 sq. metres (860.3 sq. feet)



2



2



1



C



EPC

C 72



860.3  
SQFT

## Guide Price £199,950

### SUMMARY

A rare opportunity to acquire a penthouse apartment in the retirement complex of Grosvenor Court. Positioned close to the town centre, this spacious apartment offers well proportioned accommodation to include; entrance hall, lounge/diner, fitted kitchen, two double bedrooms, family bathroom, en-suite shower room and walk-in dressing room. All residents have the benefit of a communal lounge, laundry room, communal grounds and parking. EPC C 72

Penthouse Retirement Apartment | Two Double Bedrooms | Lounge/Diner | Fitted Kitchen | En-Suite & Walk-In Dressing Room | Shower Room | Second Floor With Lift Access | Communal Gardens & Parking | Close To Town Centre | No Onward Chain

### CONTACT

**19 Fore Street**

**Ivybridge**

**Devon**

**PL21 9AB**

### EMAIL

**info@millingtontunnicliff.co.uk**

### TEL

**01752 896020**

**www.millingtontunnicliff.co.uk**