



13, Oak Lane, Windsor, Berkshire, SL4 5EU  
£475,000

 **HORLER**

### 13, Oak Lane, Windsor, Berkshire, SL4 5EU

Situated on the charming Oak Lane in Windsor, this beautifully presented Victorian mid-terrace cottage combines period character with modern living. The property offers two well-appointed reception rooms, providing versatile space for both relaxation and entertaining.

There are two well-proportioned bedrooms and a stylishly appointed bathroom, making this an ideal home for couples or small families.



## Property Summary

Located in the charming Oak Lane in Windsor, this beautifully presented Victorian cottage offers a delightful blend of character and modern living. With two inviting reception rooms, this mid-terrace house provides ample space for relaxation and entertaining. The property features two well-proportioned bedrooms and a stylish bathroom, making it an ideal home for couples or small families.

The location is truly exceptional, situated just off the highly sought-after Parsonage Lane. Residents can enjoy a leisurely downhill stroll to the picturesque banks of the River Thames, perfect for weekend walks or enjoying the scenic views. Windsor town centre, with its array of shops, restaurants, and cultural attractions, is also within easy reach, ensuring that all your daily needs are conveniently met.

The cottage boasts a lovely rear garden, providing a tranquil outdoor space to unwind and enjoy the fresh air. Additionally, the property is offered with no onward chain, allowing for a smooth and hassle-free purchase process.

For those looking to expand their living space, it is worth noting that previous planning permission was granted to extend into the loft area, although it has since lapsed. This presents a fantastic opportunity for potential buyers to explore further development options, should they wish to enhance the property.

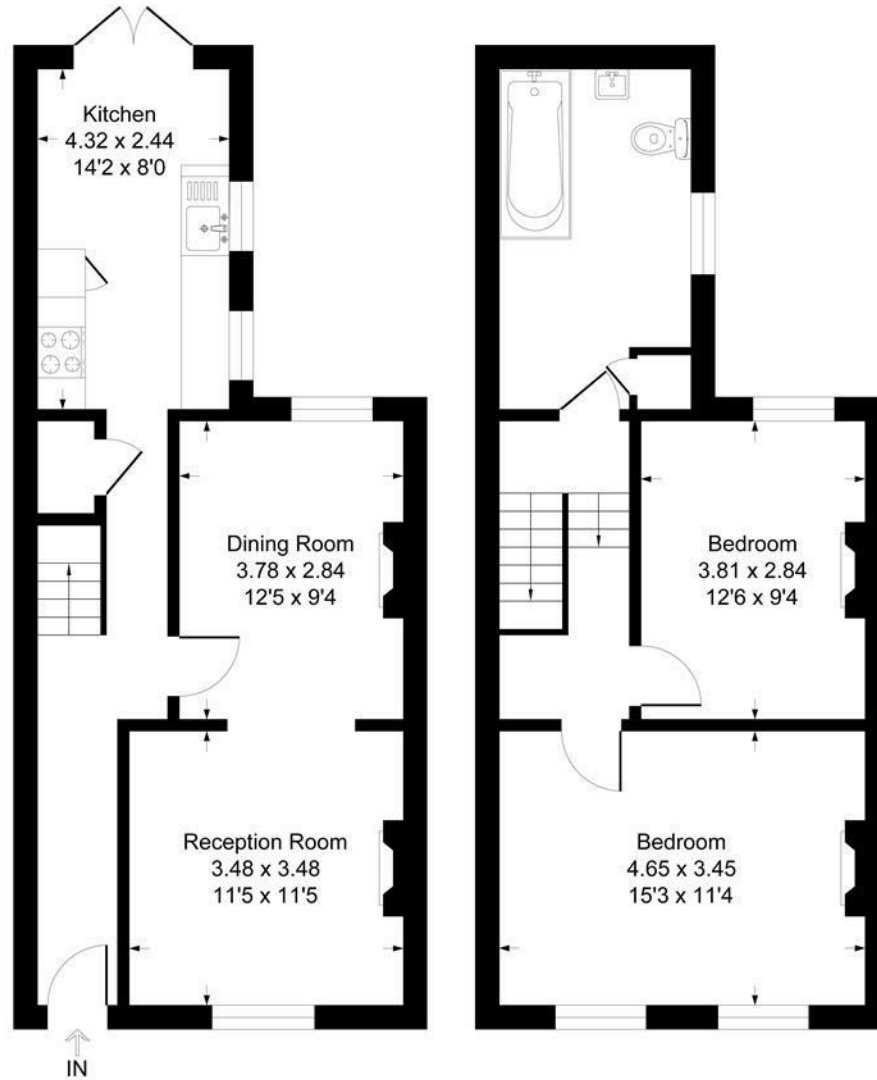
In summary, this Victorian cottage on Oak Lane is a rare find, combining charm, convenience, and potential in one of Windsor's most desirable locations.





# Oak Lane SL4

Approximate Gross Internal Floor Area = 90.7 sq m / 977 sq ft



Ground Floor

First Floor

Illustration for identification purposes only, measurements are approximate, not to scale.  
Produced By Esjay Property Marketing