



Guide Price
£600,000

Freehold

4x  3x  1x 

**Batemans Close,
Worthing, West Sussex,
BN13**

OVER 60?

Secure this property
for up to **59% less!**

cubitt & west
Helping you move forwards



Main features

- Exquisite family home
- Quiet cul-de-sac situated in a sort after location
- Family bathroom & en-suite
- Off-street parking & garage
- Early viewing advised

Accommodation

GROUND FLOOR

Entrance Hallway

Lounge: 30'2 x 11'8 (9.20m x 3.56m)

Kitchen / Breakfast Room: 16'6 x 7'1 (5.03m x 2.16m)

Utility Room: 8'2 x 4'9 (2.49m x 1.45m)

Study: 9'1 x 8'3 (2.77m x 2.52m)

Dining Room

Cloakroom

FIRST FLOOR

Landing

Bedroom 1: 14'0 x 12'4 (4.27m x 3.76m)

En-Suite Bathroom

Bedroom 2: 14'9 x 10'3 (4.50m x 3.13m)

En-Suite Shower Room

Bedroom 3: 12'3 x 9'5 (3.74m x 2.87m)

Bedroom 4: 9'5 x 8'1 (2.87m x 2.47m)

Family Bathroom

OUTSIDE

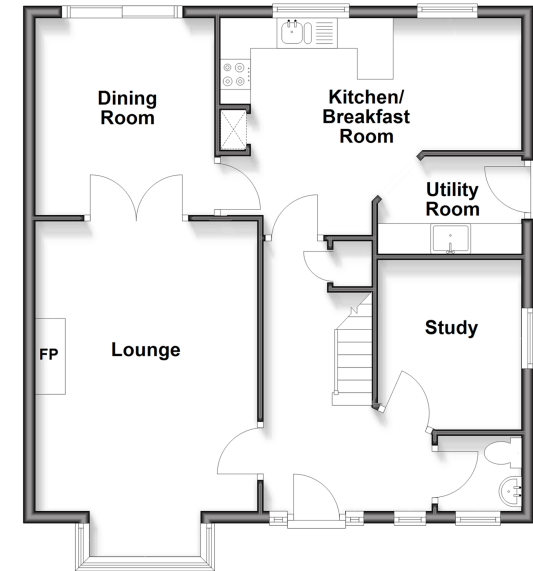
Double Garage

Driveway Parking

Front & Rear Gardens

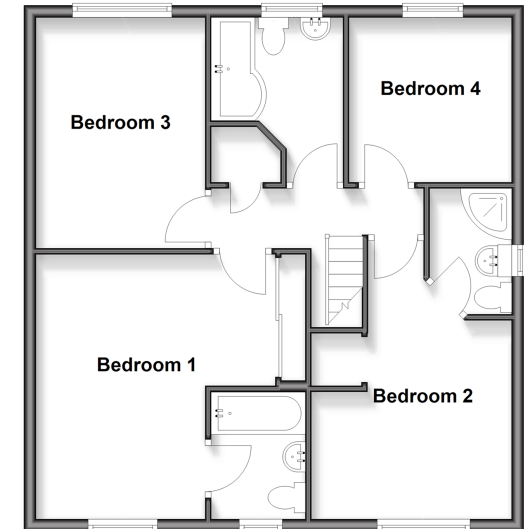
Ground Floor

Approx. 66.9 sq. metres (720.4 sq. feet)



First Floor

Approx. 65.2 sq. metres (702.3 sq. feet)



Call Worthing - 01903 700657 ■ cubittandwest.co.uk

■ Through a Homewise Home For Life Plan people aged 60+ can secure this property for up to 59% less, by purchasing a Lifetime Lease



40807324/20260413/ES/OM