



Kilburn Park Road, NW6

£820,000

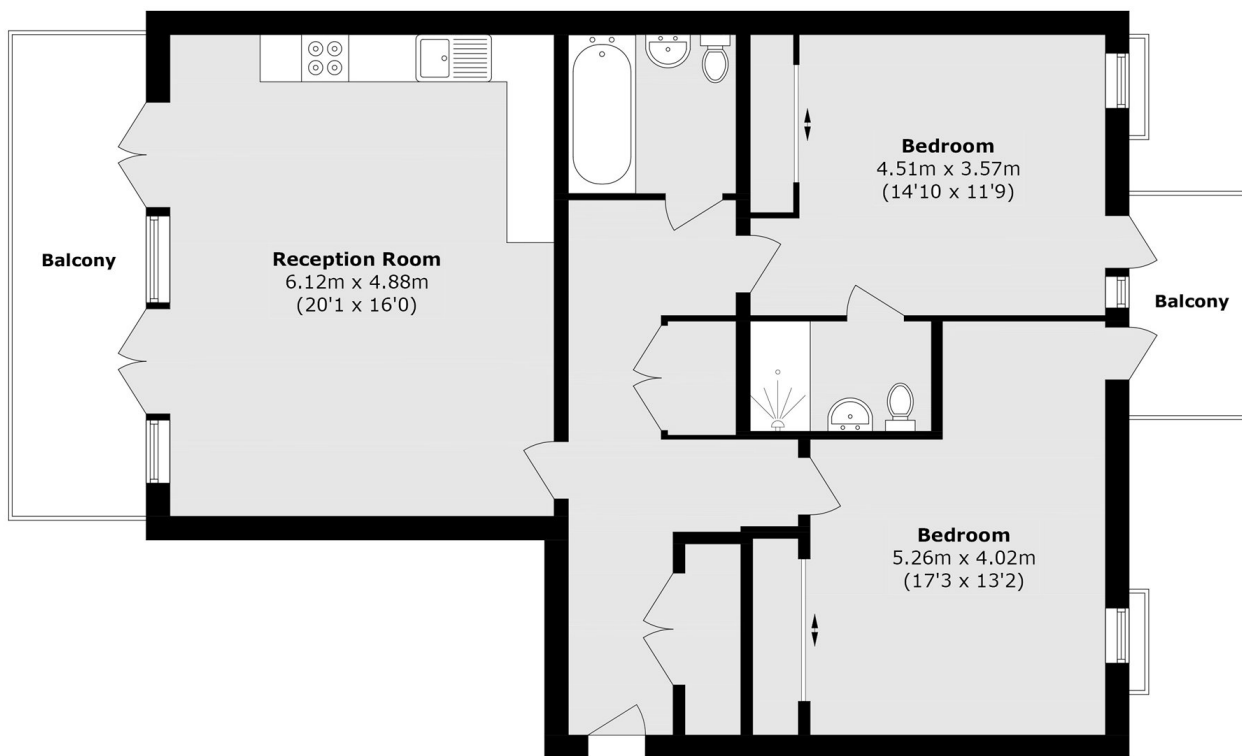
A second floor flat set in a modern purpose-built block. This property offers an open plan kitchen/reception with doors leading out to one of the two balconies, two double bedrooms with access to the second balcony and underfloor heating. The main bedroom features an en suite, and the second bedroom boasts built-in wardrobes, providing plenty of storage.

Perfectly situated near to Paddington Recreation Ground, this location offers the serene ambiance of Maida Vale and Little Venice, along with the vibrant energy of Kilburn Park and Queens Park.

Features

- Purpose-Built Block
- Two Double Bedrooms
- Two Bathrooms
- Two Balconies
- Parking
- Underfloor Heating

Kilburn Park Road, London, NW6



Total area (approx.): 91.6 sq. m (985.9 sq. ft)

Total area (approx.): 14.6 sq. m (157.1 sq. ft)