



Wandsworth Bridge Road, Fulham

London SW6

£750,000



Wandsworth Bridge Road

Fulham, London SW6

Stunning 2 bed / 2 bath split-level apartment of over 830sq ft. Share of Freehold & Chain Free.
Council Tax band: E

Tenure: Share of Freehold

EPC Energy Efficiency Rating: C

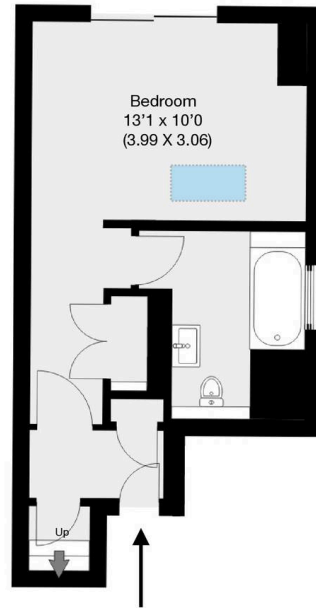
EPC Environmental Impact Rating: G



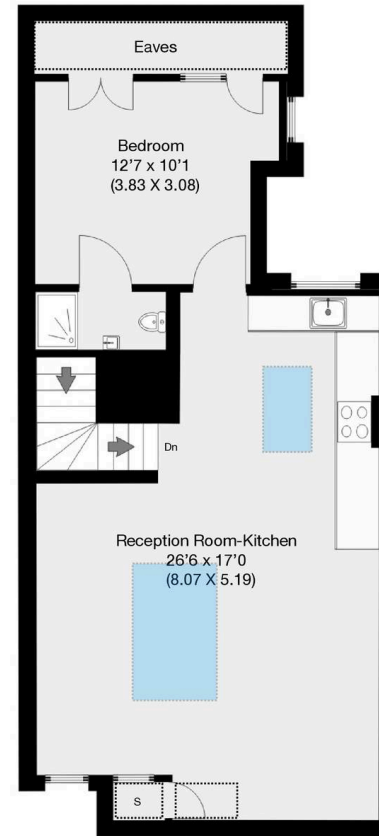


Wandsworth Bridge Road, London, SW6

Approximate Gross Internal Area (Excl. Eaves) 77.44 sqm / 833 sqft



Second Floor



Third Floor

THIS FLOOR PLAN IS PRODUCED FOR GARRISON ESTATES SUBMITTED BY ARCHIMEDIA web: www.archi-media.co.uk

Whilst every attempt has been made to ensure the accuracy of the floor plan contained here, measurements of doors, windows and rooms are approximate and no responsibility is taken for any error, omission or misstatement. These plans are for representation purposes only and should be used as such by any prospective buyer or lease. Specifically no guarantee is given on the gross internal floor area of the property if quoted on this plan and any figures given is initial guidance only and should be treated as such.



Garrison Estates

20 College Parade, Salusbury Road, Queens Park - NW6 6RN

020 4511 4820 • contact@garrisonestates.co.uk • www.garrisonestates.co.uk/