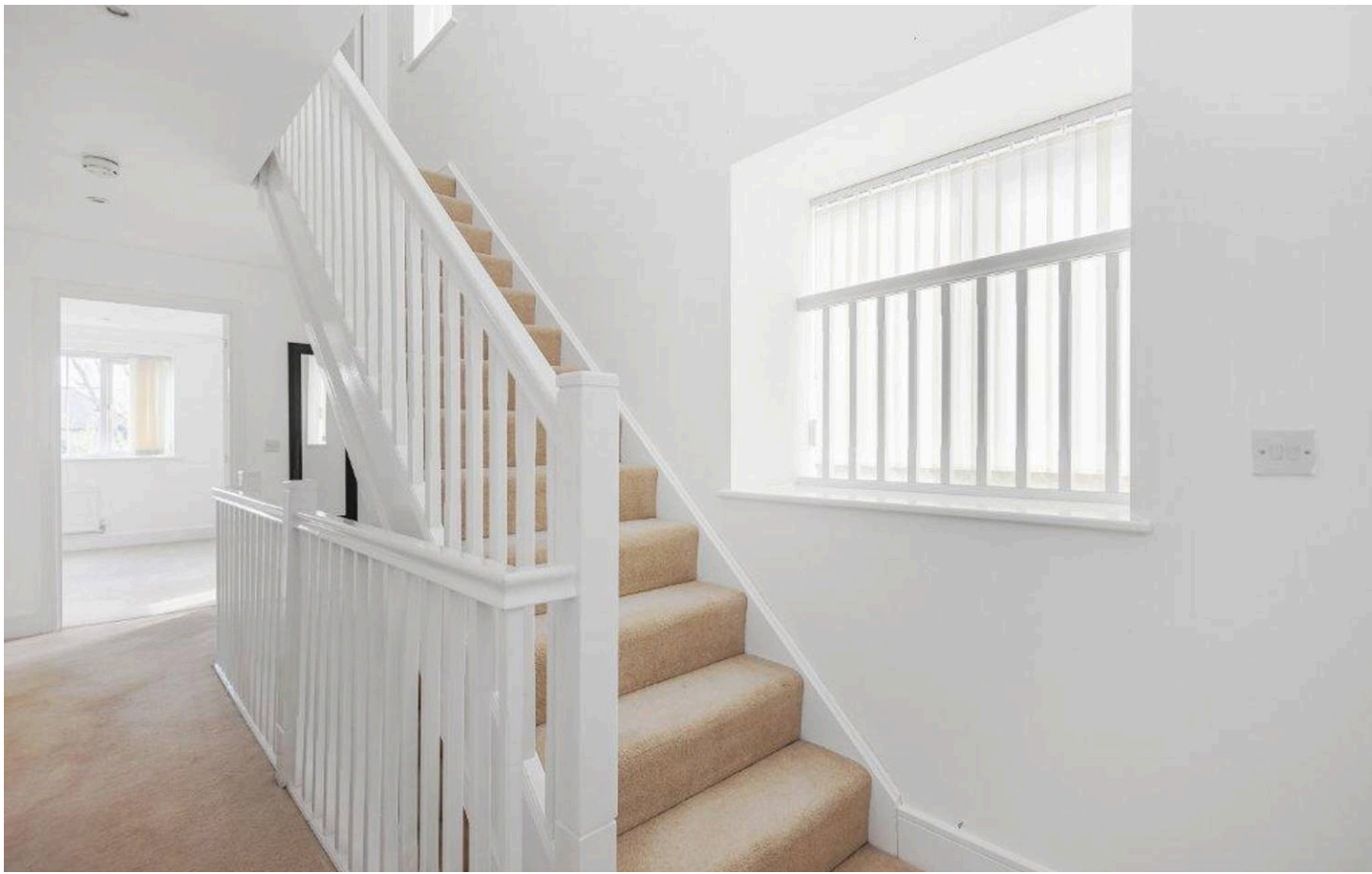




Coleridge Drive, Ruislip - HA4 8GW
£2,700 pcm

 **LAWRENCE RAND**



Coleridge Drive

Ruislip

- FOUR BEDROOM HOUSE
- MODERN FITTED KITCHEN
- BRIGHT RECEPTION ROOM
- THREE BATHROOMS
- REAR GARDEN
- ARRANGED OVER THREE FLOORS
- GARAGE
- ALLOCATED PARKING SPACE
- UNFURNISHED
- CLOSE TO EASTCOTE STATION

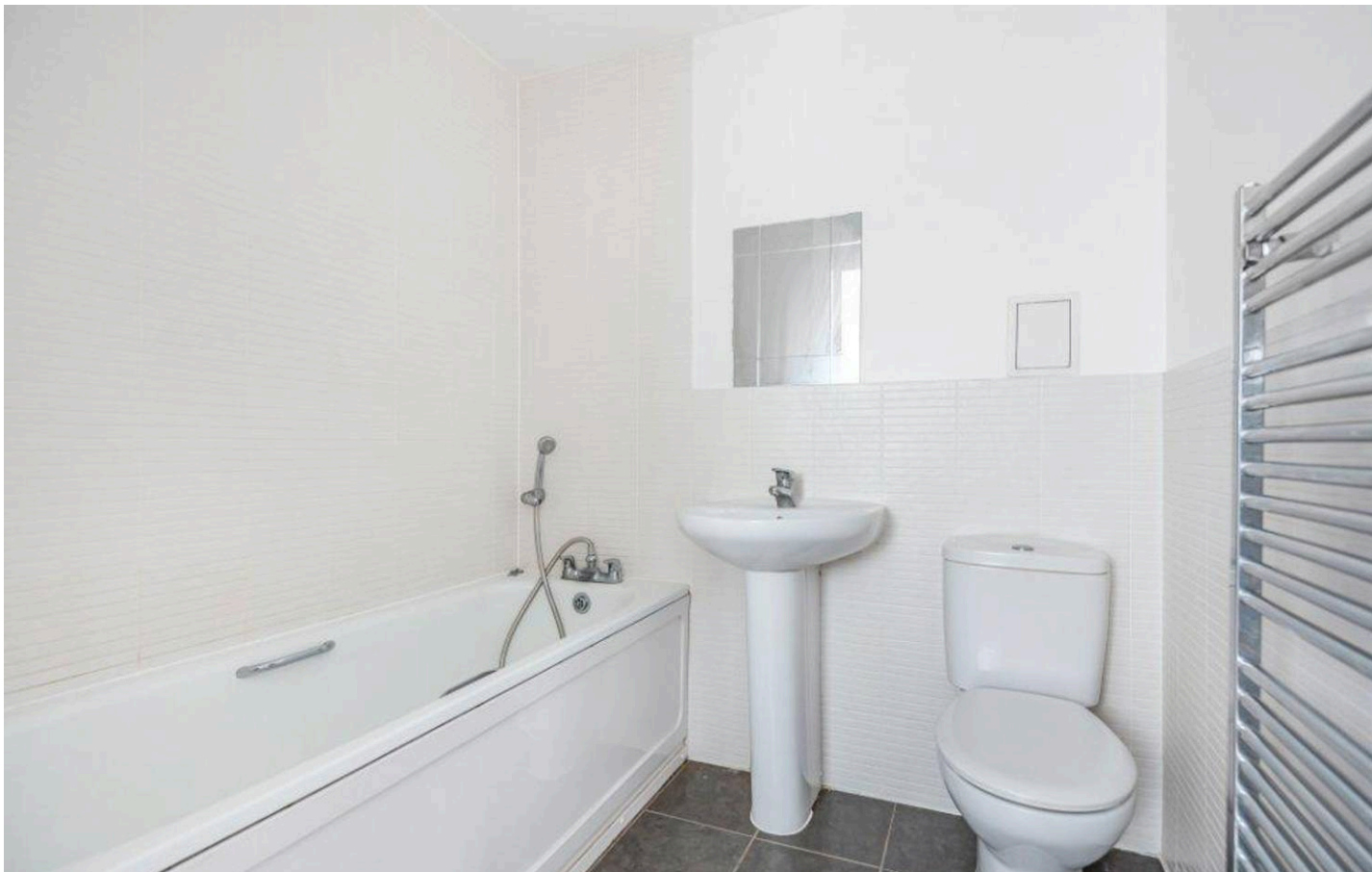
Situated in the popular Pembroke Park development is this well presented FOUR bedroom, three bathroom house TO RENT. The property benefits from a south facing rear garden and a garage.

Set over three floors, this spacious property comprises a modern kitchen, ground floor WC, and a bright reception room leading to the private rear garden. The first floor offers two bedrooms, including one with an ensuite shower room, as well as a further family bathroom. The second floor features two further double bedrooms, one of which benefits from an ensuite shower room.

Outside there is a rear garden, with gated rear access and the property further benefits from a garage and one allocated space, just to the rear of the property.



Coleridge Drive is a very popular road, being within easy reach of the local shops in Ruislip, Ruislip Manor and Eastcote. There are many well-regarded local schools in the area, with a



Coleridge Drive

Ruislip

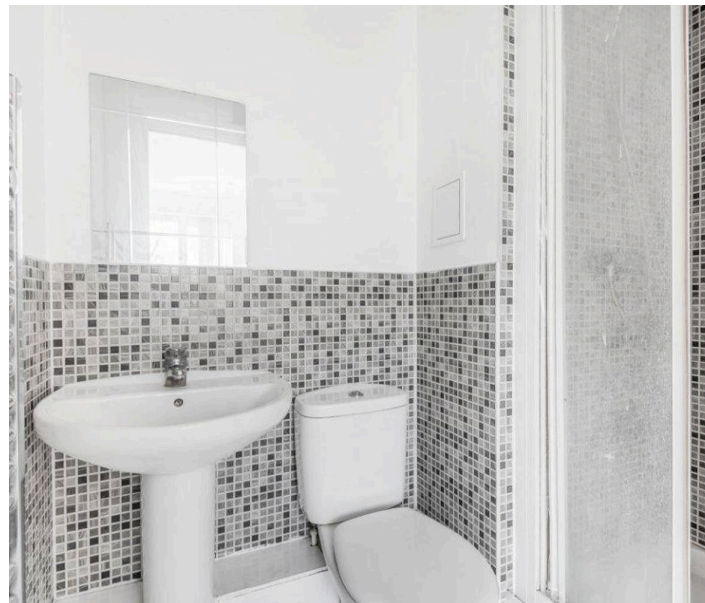
Coleridge Drive is a very popular road, being within easy reach of the local shops in Ruislip, Ruislip Manor and Eastcote. There are many well-regarded local schools in the area, with a number within easy reach and walking distance.

Coleridge Drive is a very popular road, being within easy reach of the local shops in Ruislip, Ruislip Manor and Eastcote. There are many well-regarded local schools in the area, with a number within easy reach and walking distance.

Council Tax band: TBD

EPC Energy Efficiency Rating: C

EPC Environmental Impact Rating: C

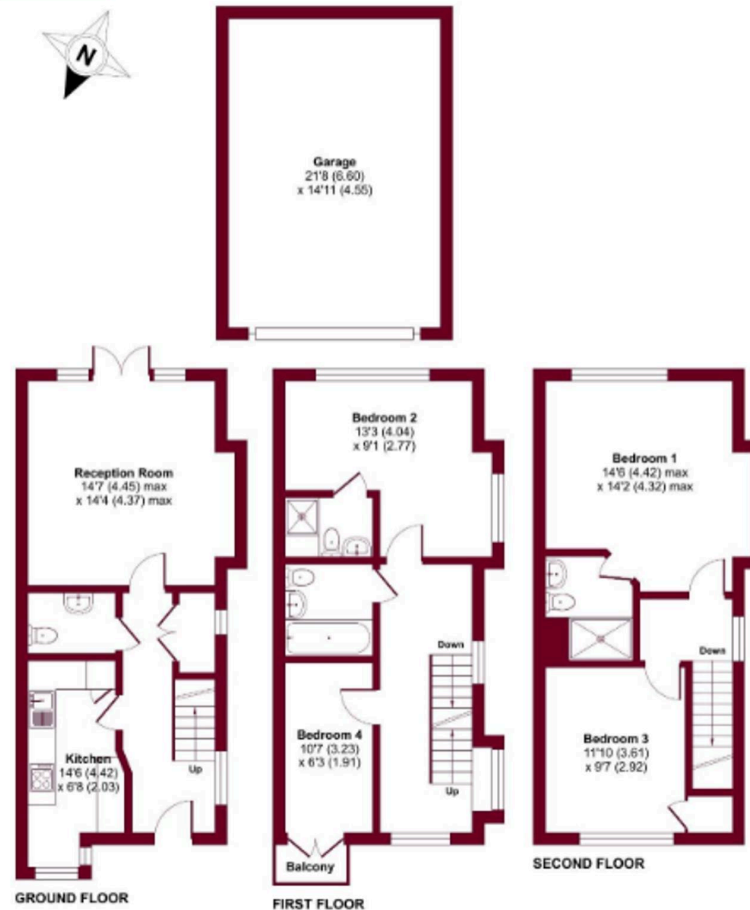




Coleridge Drive, Ruislip, HA4

Approximate Area = 1622 sq ft / 150.7 sq m (includes garage)

For identification only - Not to scale



Lawrence Rand

51 Victoria Road, Ruislip - HA4 9BH

01895 632211

Info@lawrence-rand.co.uk

www.lawrence-rand.co.uk/

Lawrence Rand Limited has made every reasonable effort to ensure the accuracy of the information provided. However, we accept no responsibility for errors, omissions, or misstatements. All measurements, distances, and descriptions are approximate and for guidance only. Prospective purchasers or tenants must verify all details independently. Some images may include AI-generated virtual staging to illustrate the potential of the property and are for visual guidance only. No warranty is given or implied, and these particulars do not form part of any offer or contract. Lawrence Rand reserves the right to amend or withdraw any property without notice.