



## Clapham Park Road, SW4

### £600,000

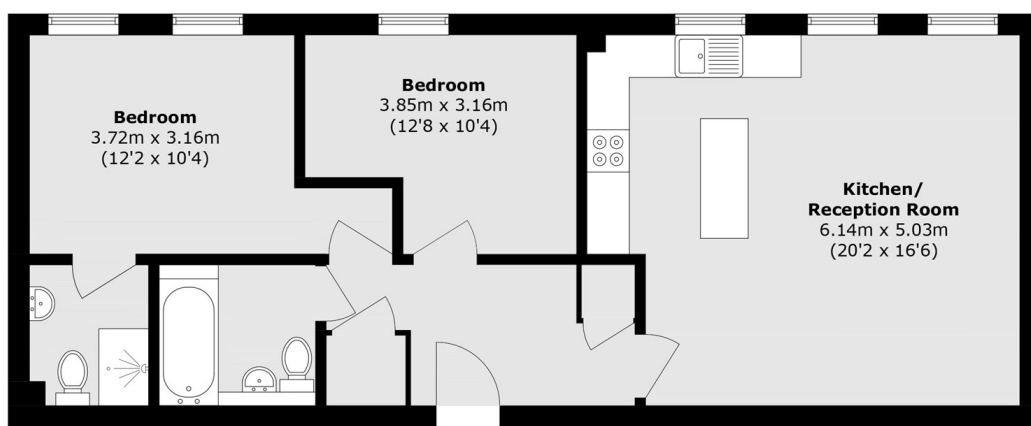
A beautifully presented fifth-floor apartment set within a private gated development, offering underground parking and stunning, uninterrupted views of the London skyline. The 795 sq ft of well-planned accommodation includes an open-plan reception room with a well equipped kitchen, two double bedrooms, and two bathrooms.

St. Paul's Court is situated in between the Abbeville Village and Clapham Old Town, both areas are renowned for their array of shops, bars and restaurants. Clapham Common station (Northern Line) along with the common itself is at the end of the road.

### Features

- Modern Apartment
- Reception Room
- Two Bedrooms
- Two Bathrooms
- Allocated Parking
- Incredible Views

# Clapham Park Road, London, SW4



Total area (approx.): 73.9 sq. m (795.4 sq. ft)