



CHI

3 BECKETS ROAD

KINGSBRIDGE



TQ7 1RH

3 BECKETS ROAD

GROUND FLOOR

Entrance Hallway | Sitting Room | Kitchen/Dining Room |
Conservatory | Bathroom | Bedroom 1 | Bedroom 2

EXTERNAL

Private Driveway & Carport | Front Garden | Rear Garden



“A two bedroom bungalow with garden and parking”...

Occupying a generous plot within a great location, this detached bungalow offers bright, well-proportioned accommodation with excellent potential to modernise and create a wonderful home.

- Detached two-bedroom bungalow on a generous plot
- Driveway parking for multiple vehicles and car port
- Landscaped west-facing garden with views across Kingsbridge
- Excellent opportunity to modernise and extend (STPP)
- Walking distance to local schools and town centre

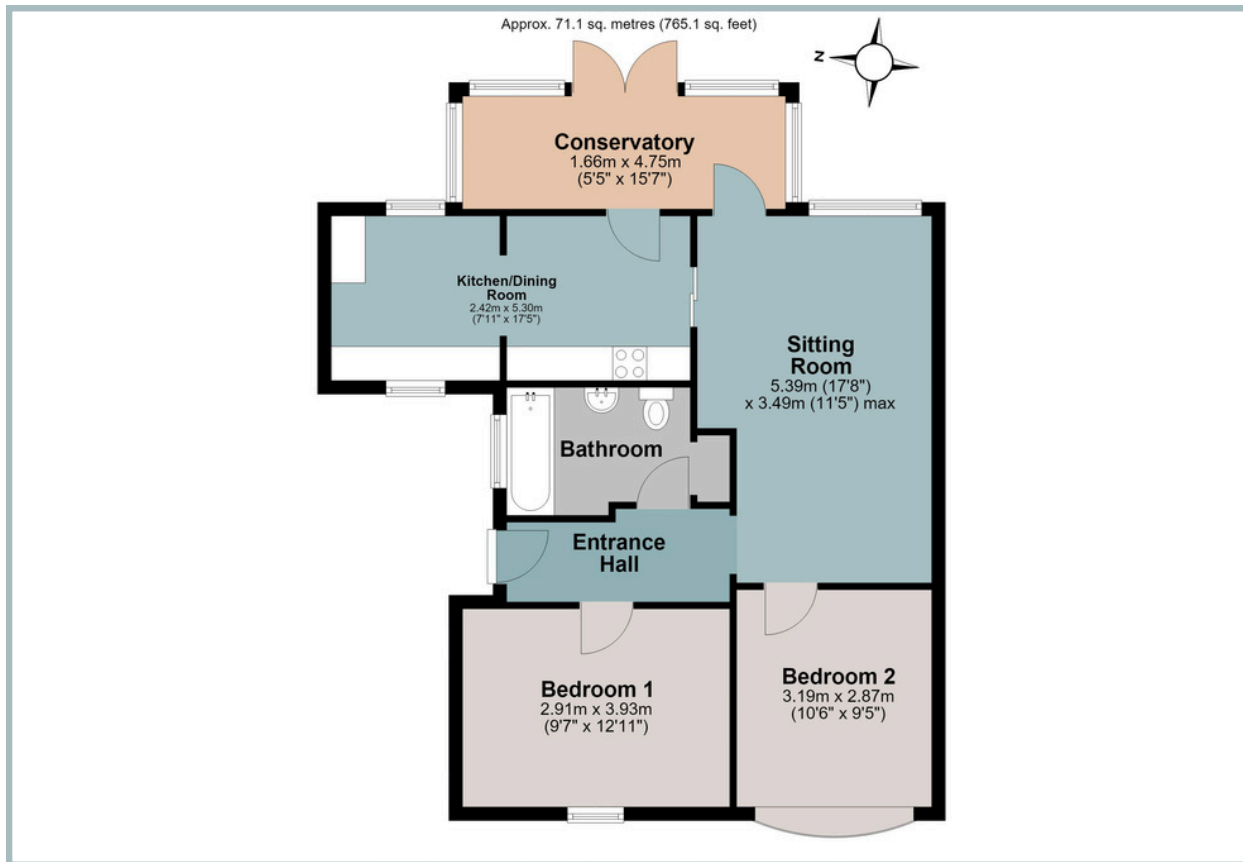
The property comprises an entrance hallway leading to two bedrooms and the family bathroom. The spacious living room, centred around a decorative fireplace, flows into the partially updated kitchen/dining room. Both rooms provide access to the conservatory, creating an additional reception space overlooking the garden.

Externally, the property benefits from driveway parking for multiple vehicles, a carport, and generous side access offering potential to extend, subject to the necessary planning permissions. The landscaped rear garden features a patio, lawn, and mature flower beds, enjoying a desirable westerly aspect with lovely views across Kingsbridge and making the most of the afternoon and evening sun.

Combining a sought-after location, generous outside space, and scope to enhance, this property is an excellent opportunity for buyers looking to put their own stamp on a home.



TOTAL APPROXIMATE AREA: 71.1 SQ M 765.1 SQ FT



IMPORTANT NOTICE: We would like to inform prospective purchasers that these sales particulars have been prepared as a general guide only. They are prepared and issued in good faith and are intended to give a fair description of the property, but do not constitute part of an offer or contract. Any description or information given should not be relied on as a statement or representation of fact that the property or its services are in good condition. Neither Charles Head, nor any of its employees, has any authority to make or give any representation or warranty whatsoever in relation to the property. Floorplans are for guidance purposes only and may not be to scale. The photographs show only certain parts and aspects of the property at the time they were taken. Any reference to alterations to, or use of, any part of the property is not a statement that any regulations or other consent has been obtained. . If there are any important matters likely to affect your decision to buy, please contact us before viewing the property. ALL STATEMENTS CONTAINED IN THESE PARTICULARS AS TO THIS PROPERTY ARE MADE WITHOUT RESPONSIBILITY ON THE PART OF CHARLES HEAD.



58 FORE ST, KINGSBRIDGE TQ7 1NY
kingsbridge@charleshead.co.uk
01548 852 352
www.charleshead.co.uk

Tenure: Freehold

Council Tax Band: C

Local Authority: South Hams District Council

Services: Mains electricity, water and drainage. Electric central heating.

EPC: Current E (49) Potential C (71)

Viewings: Very strictly by appointment only

Location: Kingsbridge is a sought-after market town nestled at the estuary head in the beautiful South Hams, a designated Area of Outstanding Natural Beauty. You'll find an array of independent shops, renowned dining experiences and cosy local pubs. The town amenities include two supermarkets, petrol station, cinema, leisure centre, medical facilities, community hospital and excellent schools.

Kingsbridge Community College is one of the top-rated secondary schools in the UK. The estuary offers boat moorings and water sport activities, while public transport and well-connected road links lead to nearby Dartmouth, Salcombe and Totnes. With an abundance of pristine beaches, hidden coves and breathtaking walks on the doorstep.

What Three Words: ///tucked.grapes.outsize

Salcombe 7.6 miles - Totnes 13.1 miles (Railway link to London Paddington) - Dartmouth 12 miles