



Edenham Road, Hanthorpe Bourne  
£425,000 **Freehold**

QUENTIN  
MARKS





# Key Features



- Large Extended Bungalow
- 4 Bedrooms
- Ensuite to Master
- Open Fields To Front
- Large Lounge

A deceptively spacious and beautifully presented detached bungalow, extensively extended and significantly improved, set in a sought-after location with stunning open views to the front.

It is rare for the phrase "must be viewed to fully appreciate the size" to be more appropriate than in the case of Homeleigh, a generously proportioned bungalow that has been extended to the rear by the previous owner and further enhanced by the current owners to create a superb family home.

A central hallway provides access to all principal rooms, creating a well balanced layout ideal for family living. The extensively fitted kitchen enjoys an outlook over open fields to the front and features a comprehensive range of units with





wooden work surfaces. A useful utility cupboard offers plumbing for a washing machine, and the original garage has been adapted to offer both a front storage area and a utility space to the rear.

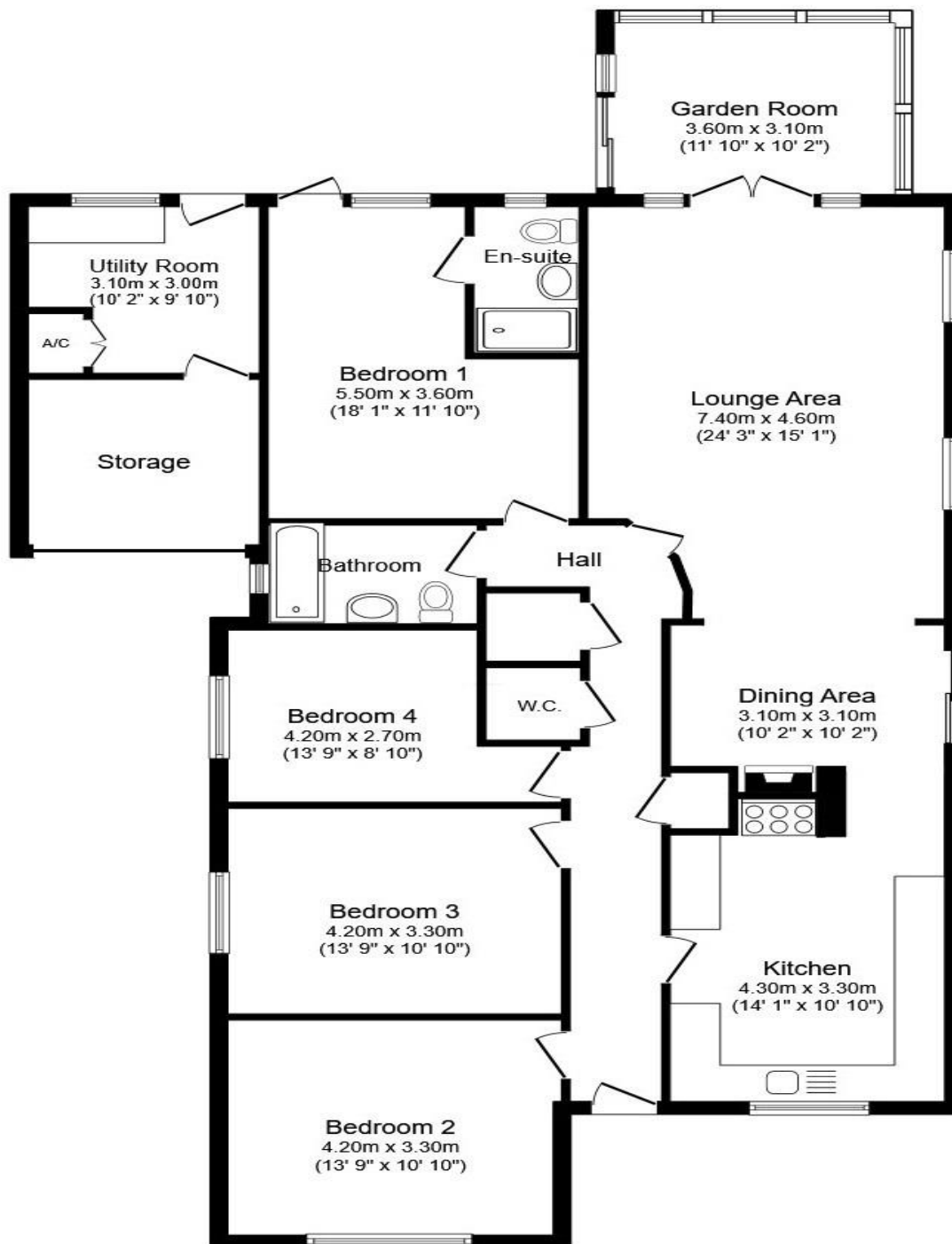
The large lounge is flooded with natural light and benefits from double glazed doors leading to a spacious conservatory overlooking the rear garden. An adjacent dining area features a wood burner set within a characterful fireplace - perfect for cosy evenings.

There are four bedrooms in total, including a generously sized master suite with French door opening directly onto the rear garden. The en-suite is well appointed with a double shower cubicle, WC, and a vanity unit with storage beneath. A modern family bathroom serves the remaining bedrooms.

Outside, the private rear garden is fully enclosed and mainly laid to lawn, with a covered veranda extending over part of the patio - ideal for entertaining in all weather. Additional features include a wood store and a large, fully powered outbuilding currently used as a "man cave." To the front, there is ample off-road parking for multiple vehicles, and open countryside views provide a picturesque outlook.

This is an exceptional opportunity to acquire a substantial, well-maintained home in a desirable setting - early viewing is highly recommended.





Floor Plan

To view this property call Quentin Marks on:  
**01778 391600**



# Selling your property?

Contact us to arrange a **FREE** home valuation.

 01778 391600

 2 West Street, Bourne, Lincs, PE10 9NE

 sales@quentinmarks.co.uk

 [www.quentinmarks.co.uk](http://www.quentinmarks.co.uk)



SCAN FOR MORE  
INFORMATION



Sharman Quinney Holdings Limited is registered in England and Wales under company number 4174227, Registered Office is Cumbria House, 16-20 Hockliffe Street, Leighton Buzzard, Bedfordshire, LU7 1GN. VAT Registration Number is 500 2481 05.

1: These particulars do not constitute part or all of an offer or contract. 2: The measurements indicated are supplied for guidance only and as such must be considered incorrect. 3: Potential buyers are advised to recheck the measurements before committing to any expense. 4: Sharman Quinney has not tested any apparatus, equipment, fixtures, fittings or services and it is the buyers interests to check the working condition of any appliances. 5: Sharman Quinney has not sought to verify the legal title of the property and buyers must obtain verification from their legal representative. 6: Intending purchasers will be asked to produce identification documentation at a later stage and we would ask your co-operation in order that there will be no delay in agreeing the sale. Ref: SQB100214 - 0002

