



PRICES FROM

£1,650,000

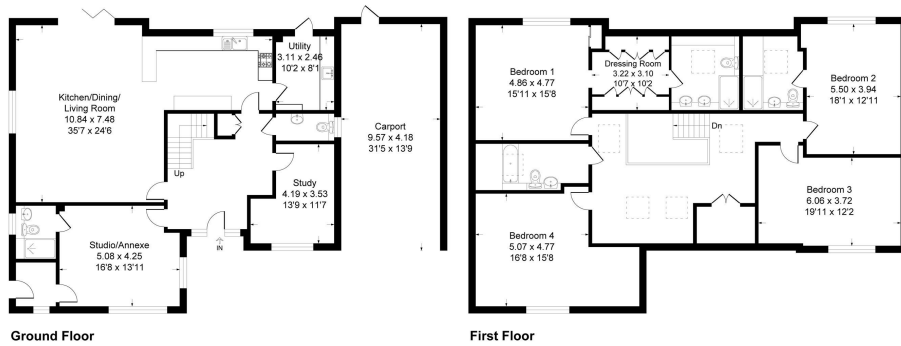
Westerham Park

Westerham, TN16 2ED

EPC RATING: COUNCIL TAX BAND:

Plot 2, 3 & 4 Westerham Park

Approximate Gross Internal Area 315.3 sq m / 3395 sq ft
 Carport Area 40.0 sq m / 431 sq ft
 Total Area 355.3 sq m / 3825 sq ft



Ground Floor


First Floor



This plan is for layout guidance only. Not drawn to scale unless stated. Windows and door openings are approximate. Whilst every care is taken in the preparation of this plan, please check all dimensions, shapes and compass bearings before making any decisions reliant upon them.
 Produced By Planpix

4 
 4 
 3 



Energy Efficiency Rating		Current	Potential
Very energy efficient - lower running costs			
(92 plus) A			
(81-91) B			
(69-80) C			
(55-68) D			
(39-54) E			
(21-38) F			
(1-20) G			
Not energy efficient - higher running costs			
England & Wales		EU Directive 2002/91/EC	

Agents Note: Whilst every care has been taken to prepare these particulars, they are for guidance purposes only. All measurements are approximate and are for general guidance purposes only and whilst every care has been taken to ensure their accuracy, they should not be relied upon and potential buyers/tenants are advised to recheck the measurements



OFFICE ADDRESS
 1&2 The Grange
 Westerham
 Kent
 TN16 7AH

OFFICE DETAILS
 01959 587 460
 infowh@sinclairhammelton.co.uk
<https://www.sinclairhammelton.co.uk/for-sale-in-westerham/>