



FOR SALE

£250,000

5 Seaview Apartments 14-15 South Parade,
Southsea, PO5 2JP.

Tenure: Leasehold

ESTATE  AGENTS

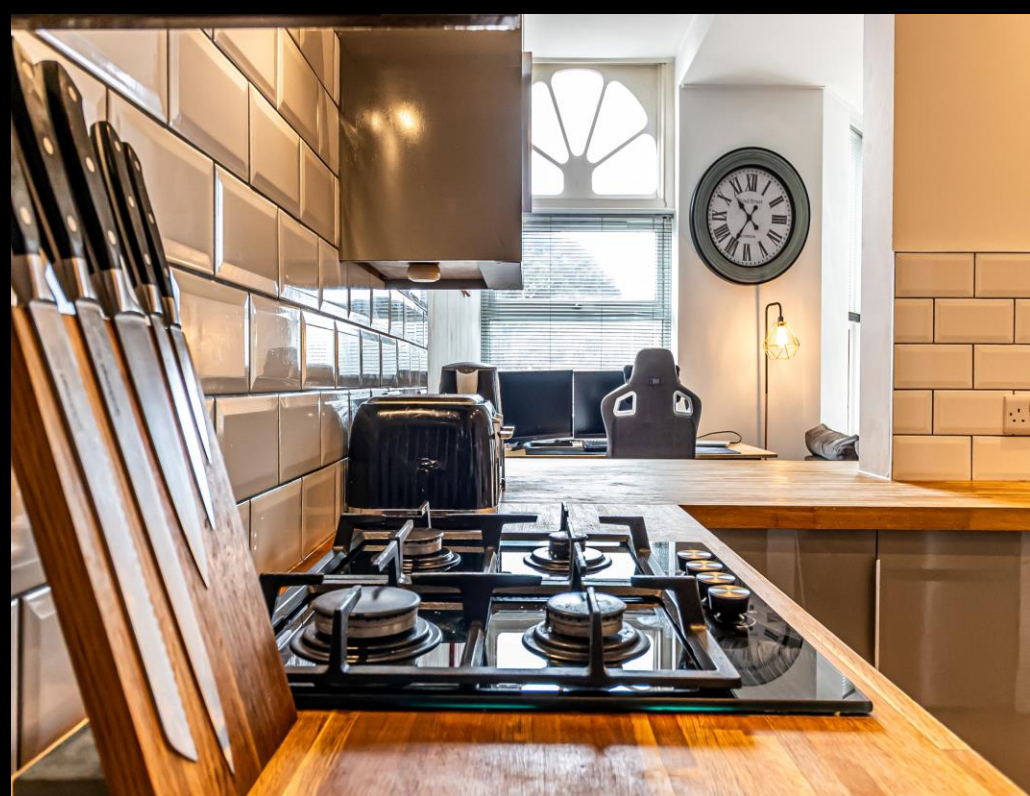
LAWSON ROSE

PROPERTY DESCRIPTION

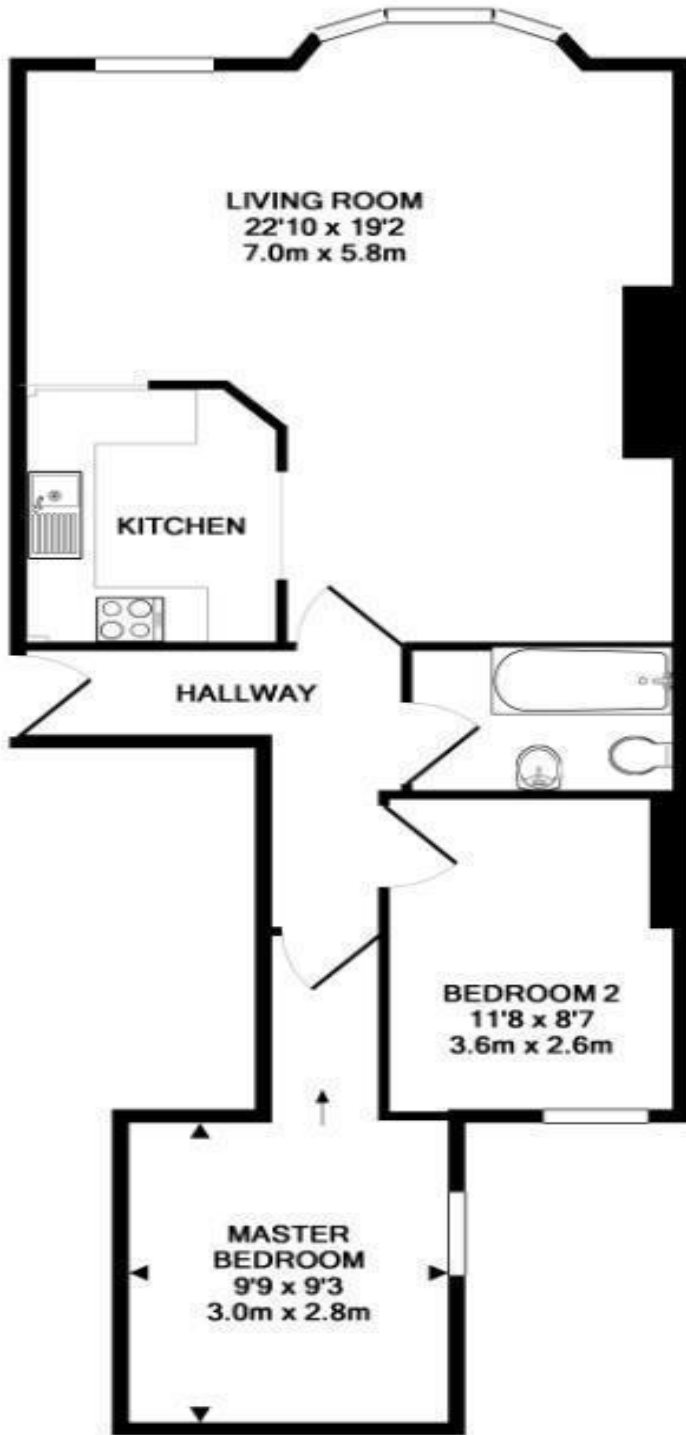
Central Seafront Location – Two-Bedroom Apartment This well-presented two-bedroom apartment is situated on the hall floor of Sea View Apartments, offering a prime seafront position with views over the communal grounds. The accommodation features a bright, open-plan lounge and dining area, ideal for relaxing or entertaining, with natural light and a welcoming atmosphere. The fitted kitchen is practical and well-laid out, complemented by a modern bathroom suite and two comfortable double bedrooms. The property benefits from double glazing and gas central heating throughout, making it both comfortable and energy-efficient. Located close to local shops, cafes, and the seafront promenade, this apartment offers an excellent opportunity to enjoy coastal living in a convenient, sought-after location. Internal viewings are highly recommended and can be arranged by contacting the team at Lawson Rose.

Material Information:

- Construction: Brick Built
- Electricity Supply: Alternating Current
- Heating: Gas Central Heating
- Water Supply: Mains Water Supply
- Sewage: Mains Sewage
- Broadband: Standard, Superfast Fibre and Gfast Fibre are available.
- Mobile: Ofcom Checker shows EE, Three, O2 and Vodafone all have voice and data availability in this area.
- Permit Parking: 1st permit is £30, 2nd permit is £120 and 3rd permit (where available) is £300.
- Council Tax: Portsmouth City Council – Band C
- Flood Risk – Low Risk (Stated on the Gov.uk portal)
- Tenure – Leasehold
- Date of Original Lease: 22 Aug 2002
- Term: 125 years from 1 July 2002 – 101 Years
- Management Company: GD3
- Service Charge: Service charge for period 01 Jan 26 to 31 Jul 26 - £828.45 + Reserve fund for period 01 Jan 26 to 31 Jul 26 - £ 62.50 = £890.95
- Ground Rent: £125 P/A







Score	Energy rating	Current	Potential
92+	A		
81-91	B		82 B
69-80	C	73 C	
55-68	D		
39-54	E		
21-38	F		
1-20	G		

Please note that none of the services or appliances have been tested by Lawson Rose Estate Agents.

Whilst every attempt has been made to ensure the accuracy of the floor plan contained here, measurements of doors, windows, rooms and any other items are approximate and no responsibility is taken for any error, omission, or mis-statement. This plan is for illustrative purposes only and should be used as such by any prospective purchaser. The services, systems and appliances shown have not been tested and no guarantee as to their operability or efficiency can be given
Made with Metropix ©2018