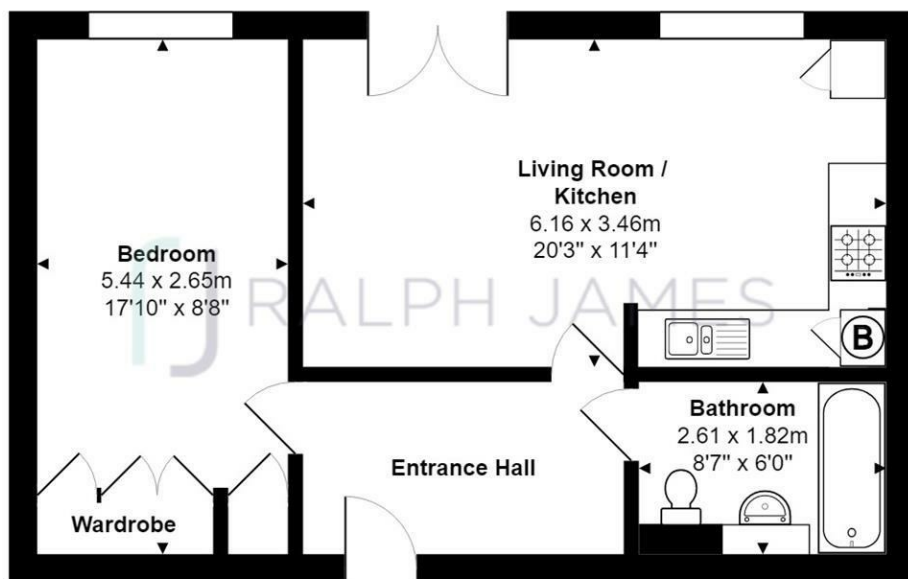


£1,200 Per Month





### Ground Floor Flat

Barton Court, Godstone Road, Whyteleafe

Total Area: 48.8 m<sup>2</sup> ... 525 ft<sup>2</sup>

Floor Plan measurements are approximate and are for illustrative purposes only.

While we do not doubt the floor plans accuracy, we make no guarantee, warranty or representation as to the accuracy and completeness of the floor plan.  
www.stillmoving.london © 2018



 RALPH JAMES





This modern, purpose built apartment in the popular Wyteleafe location is close to station and shops, providing convenient living. If you travel to work, the regular services via train or buses are excellent and you are only a short drive from jumping onto the M25!

The well maintained communal entrance leads to this well presented apartment. Bright and spacious inside, you will appreciate the amount of storage provided here, a rarity in a modern build!

The beautiful open plan living/ dining area has plenty of space for friends and family to gather whilst you cook up a storm in the modern, white fitted kitchen, which is open plan into the living area. There is lots of work top space and units, and room for a dining table for those more formal dinners.

The large double bedroom has built in wardrobe space and there is a fresh white modern family bathroom.

Residential allocated parking spaces are easy to access outside as well as the communal bin stores, neatly hidden away.





Anna likes it  
because...



Per Adult Set Up	£150.00 + VAT
Deposit	1.5 x Monthly rent
Refundable at end of tenancy if check-out satisfactory	
Check-out Inventory	£120.00 + VAT
-----	
---Additional Adult Ref if required	£150.00 + VAT
Guarantor Ref if required	£150.00 + VAT
Company Tenant if applicable	£350.00 + VAT