



Room 5, 103 Hazelwood Close, Cambridge, CB4 3SP

£650 Per month

Room 5, 103 Hazelwood Close, Cambridge CB4 3SP

Six bedroom, Licensed HMO for 6 persons.

A spacious, first floor double bedroom, part furnished to include a single bed, chest of drawers, sofa benefitting with built in closet

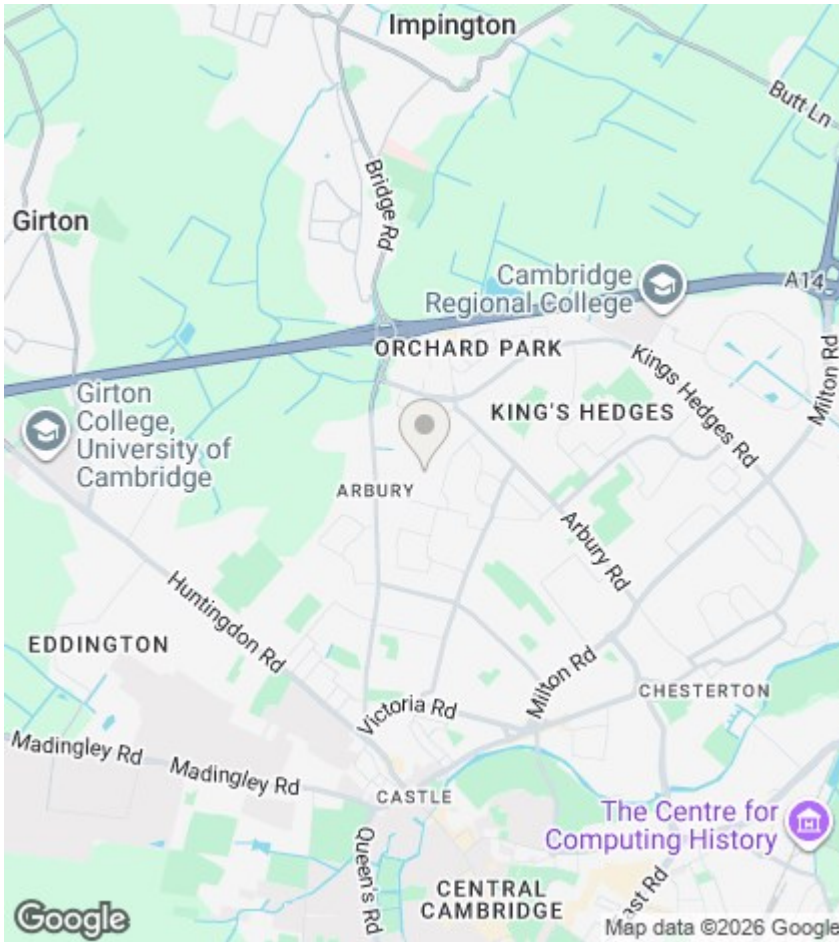


Council Tax Band: C



Front exterior

Bedroom 5



Directions

Viewings

Viewings by arrangement only. Call 07398313902 to make an appointment.

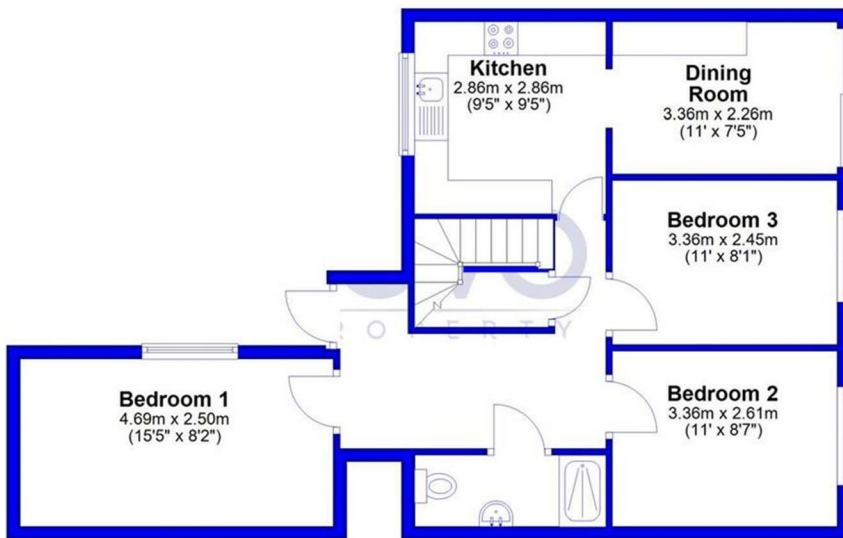
EPC Rating:

C

Energy Efficiency Rating		Current	Potential
Very energy efficient - lower running costs			
(92 plus) A			
(81-91) B			
(69-80) C		71	
(55-68) D			
(39-54) E			
(21-38) F			
(1-20) G			
Not energy efficient - higher running costs			
England & Wales		EU Directive 2002/91/EC	

Ground Floor

Approx. 62.2 sq. metres (669.3 sq. feet)



First Floor

Approx. 47.1 sq. metres (507.5 sq. feet)

