



**HAMLIN SMITH**

GUIDE PRICE £475,000 - £500,000

## MEDINA VILLAS, HOVE

2 BEDROOMS

1 RECEPTION

1 BATHROOM

\*\*Guide price £475,000 - £500,000\*\* Nestled in the charming Medina Villas, Hove, this beautifully renovated raised ground-floor apartment offers a delightful blend of modern living and character features. With two spacious double bedrooms, this property is perfect for those seeking comfort and style.

- Two bedroom apartment
- Raised ground floor
- Shared garden
- Moments from Hove Seafront
- Character features
- Share of freehold





## Medina Villas

Approximate Gross Internal Area = 73.9 sq m / 795 sq ft

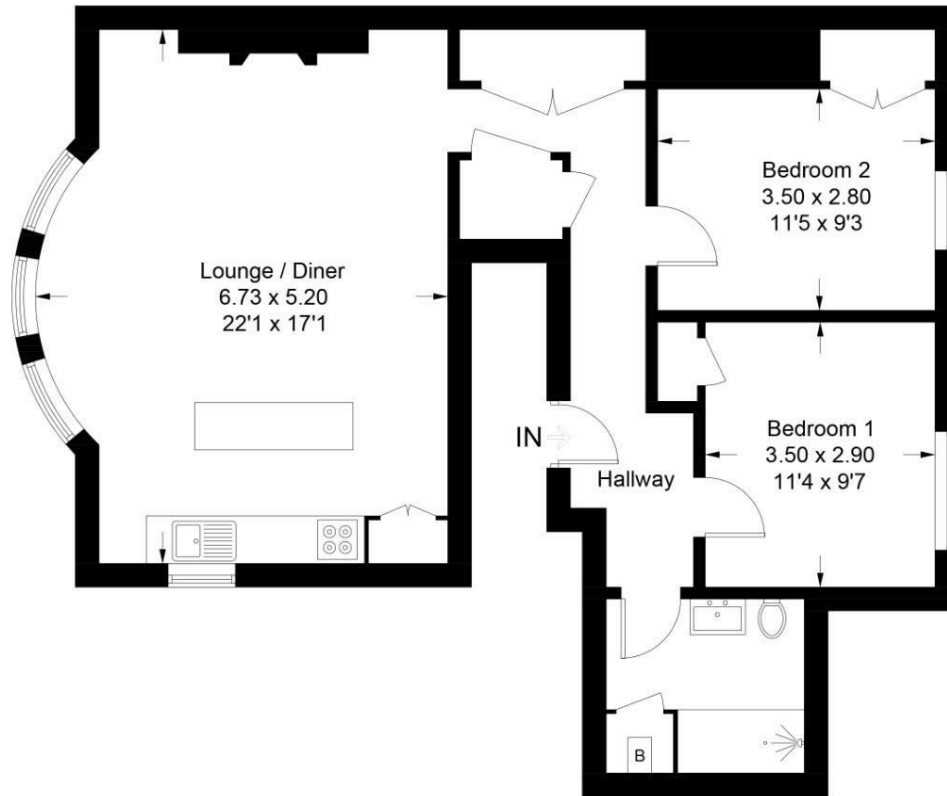


Illustration for identification purposes only, measurements are approximate, not to scale. Fourlabs.co © (ID1301924)

## HAMLYN SMITH

The high ceilings create an airy and bright atmosphere, making the open plan kitchen and living space an inviting area for both relaxation and entertaining. The apartment boasts a West facing shared garden, providing a lovely outside space to enjoy the fresh air and sunshine. The thoughtful renovation has preserved the character of the property while incorporating contemporary finishes, ensuring a warm and welcoming home.

Location is key, and this property does not disappoint. Just moments from the stunning Hove Seafront, residents can enjoy leisurely walks along the beach or partake in various water activities. Additionally, the vibrant Church Road is nearby, offering a plenty of shops, cafes, and restaurants, catering to all your daily needs. With a share of the freehold, this apartment presents an excellent investment for its next owner.

In summary, this two-bedroom flat in Medina Villas is a rare find, combining modern comforts with the charm of Hove's coastal lifestyle. Don't miss the chance to make this delightful property your new home.



MID SUSSEX

9 Keymer Road | Hassocks | BN6 8AD  
+44 (0) 1273 762211 | midsussex@hamlynsmith.co.uk

HOVE

50 Goldstone Villas | Hove | BN3 3RS  
+44 (0) 1273 762222 | hello@hamlynsmith.co.uk