



Edith Road, W14

£3,000,000

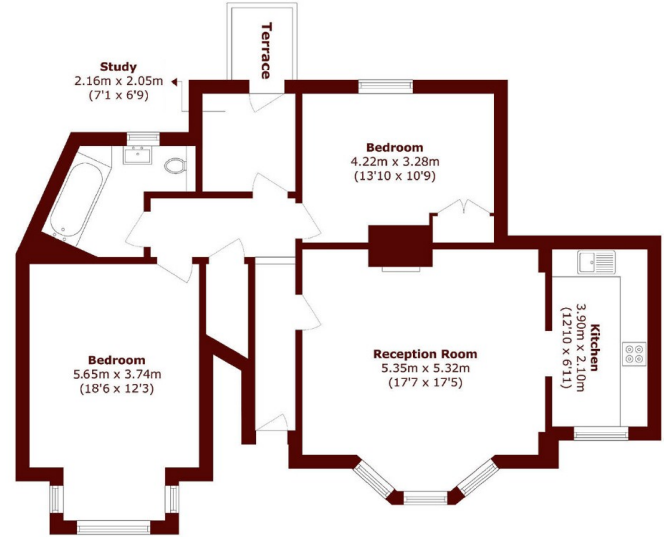


- Double Fronted
- Private Garden
- Freehold
- Four Flats
- In Need Of Modernisation
- Sought After Location



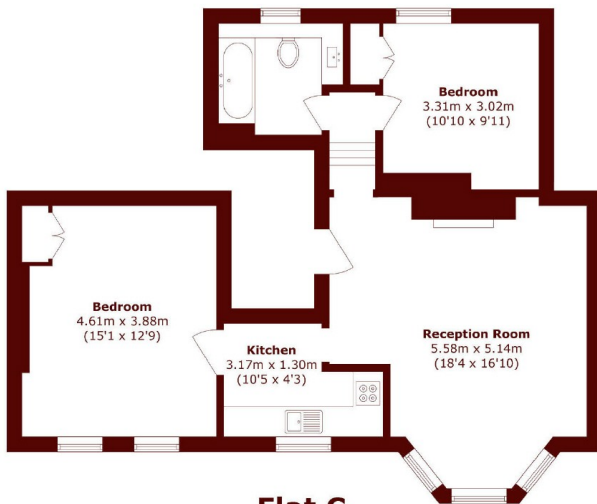
Flat A

Total area (approx.): 90.0 sq. m (968.7 sq. ft)
(Including Vault)
Basement (approx.): 7.5 sq. m (69.9 sq. ft)



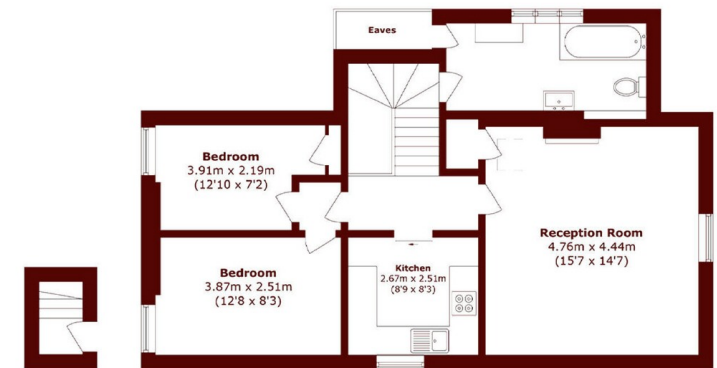
Flat B

Total area (approx.): 91.3 sq. m (982.7 sq. ft)
Terrace area (approx.): 2.1 sq. m (22.6 sq. ft)



Flat C

Total area (approx.): 68.9 sq. m (741.6 sq. ft)



First Floor

Second Floor

Flat D

Total area (approx.): 67 sq. m (721.1 sq. ft)
(Excluding Eaves)

Marsh & Parsons Brook Green

107-109 Shepherds Bush
Road, London, W6 7LP
020 7605 7765