

**ALLDAY
& MILLER**



Crome House, Parkfield Drive, Northolt, UB5 5NU
£265,000





Crome House, Parkfield Drive, Northolt, UB5 5NU

£265,000

- Two Double Bedrooms
- Modernized Kitchen
- Double Glazing
- Quiet Location
- Close To Popular Schools
- Split Level
- New Gas Central Heating
- Close To Bus Services
- Good Condition Throughout
- Close To Green Spaces And Parks

Description

This delightful home comprises of a large living room and modest sized kitchen, two double bedrooms and a family bathroom, spread across two floors. The property is presented in good condition throughout and offers bright and airy interiors.

Situation

The property is close to a number of regular bus services running through Northolt; to Harrow, Heathrow, Northolt Station (1.0 mile away), Greenford, Ealing and Hayes. Tube services run from Northolt Station and Crossrail services will soon arrive through Hayes and Harlington with much shorter journey times into London. In addition, the property backs onto Rectory Park and is close to a few other green spaces including Northala Playing Fields and Lime Trees Park. The property is also close to a number of schools including Greenford High School (OUTSTANDING) and Alec Reed Academy which offers early education up until further education.



Floor Plans

Crome House, Northolt, UB5

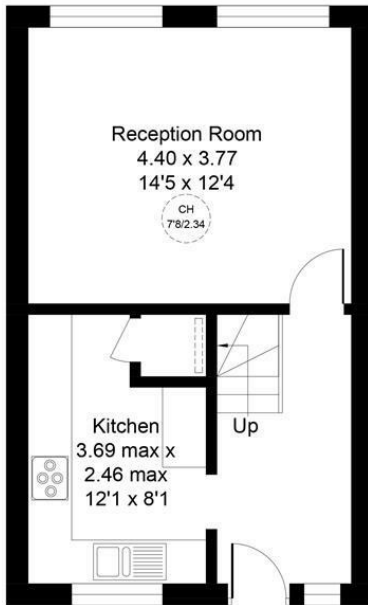
Approximate Area = 804 sq ft / 74.7 sq m

For identification only - Not to scale

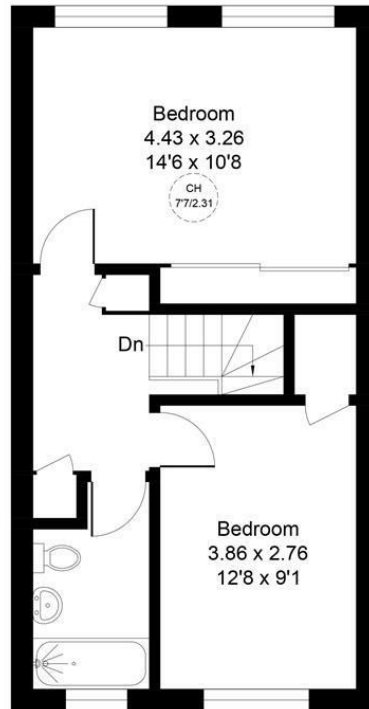


CH = Ceiling Height

[Dashed box] = Reduced headroom below 1.5m / 5'0



Second Floor

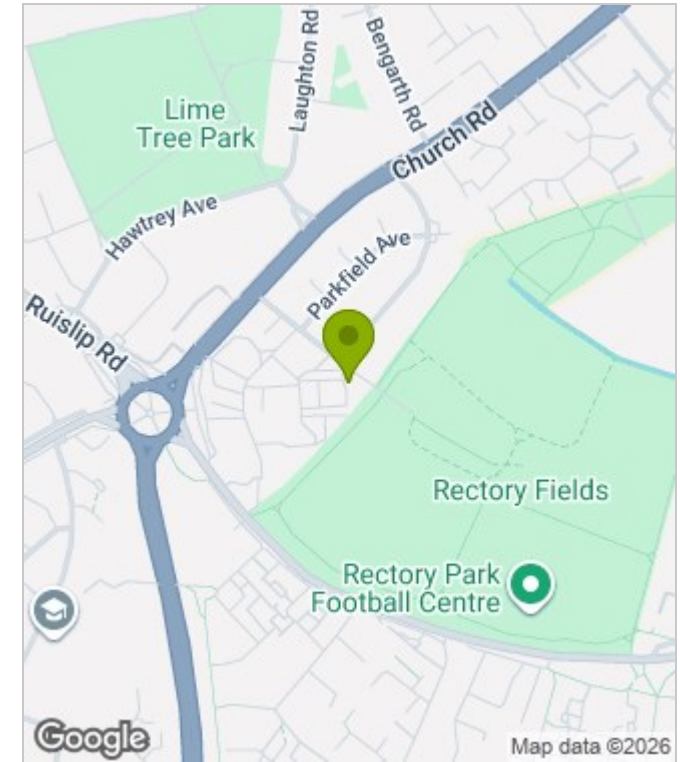


Third Floor

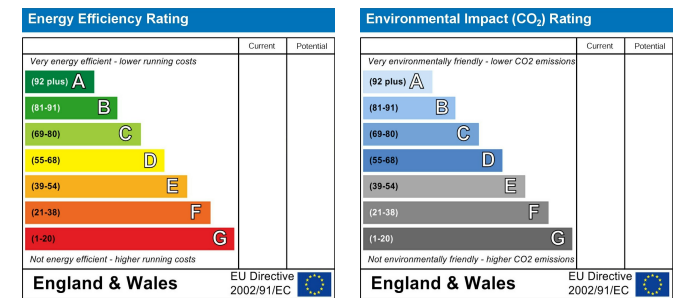
Floor plan produced in accordance with RICS Property Measurement Standards incorporating International Property Measurement Standards (IPMS2 Residential). ©Vizion Property Marketing 2025. Produced for Allday & Miller.



Area Map



Energy Performance Graph



These particulars, whilst believed to be accurate are set out as a general outline only for guidance and do not constitute any part of an offer or contract. Intending purchasers should not rely on them as statements of representation of fact, but must satisfy themselves by inspection or otherwise as to their accuracy. No person in this firm's employment has the authority to make or give any representation or warranty in respect of the property.