



Price

£250,000

Leasehold

2x  1x  1x 

Victor Walk,
Hornchurch, Essex,
RM12

OVER 60?

Secure this property
for up to **59% less!**

 **DOUGLAS
ALLEN**
Helping you move forwards



Main features

- A large split level maisonette with communal garden area
- No onward chain
- Conveniently located for Hornchurch Town Centre
- Own balcony
- Situated close to local schools

Accommodation

SECOND FLOOR

- Hallway
- Kitchen: 11'5 x 8'7 (3.48m x 2.62m)
- Lounge/diner: 15'7 x 12'6 (4.75m x 3.81m)
- Balcony

THIRD FLOOR

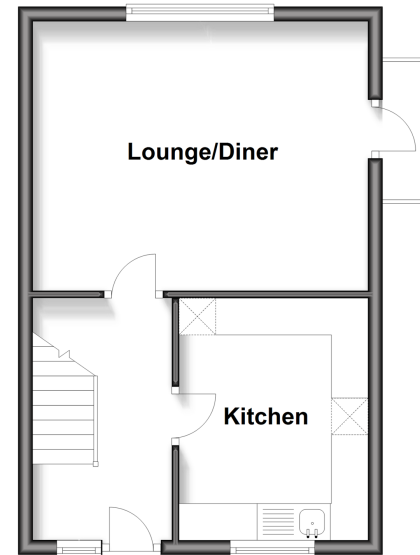
- Landing
- Bedroom 1: 14'6 x 9'3 (4.42m x 2.82m)
- Bedroom 2: 13'2 x 9'4 (4.02m x 2.85m)
- Bathroom: 7'10 x 6'5 (2.39m x 1.96m)

OUTSIDE

- Communal garden area
- Residents Permit Parking

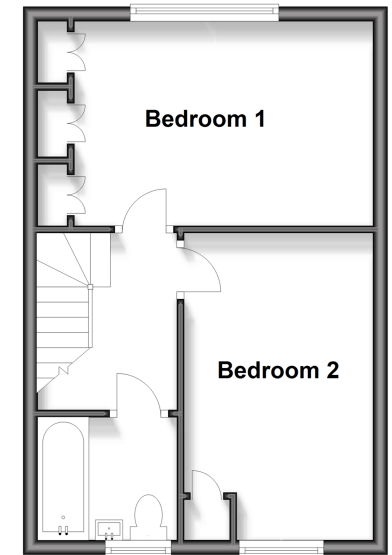
Second Floor

Approx. 32.4 sq. metres (348.5 sq. feet)



Third Floor

Approx. 32.4 sq. metres (348.5 sq. feet)



Call Hornchurch - 01708 437777 ■ douglasallen.co.uk

- A private rental licensing scheme applies to some properties in this area, please contact us before proceeding
- Legal advice should be taken to verify fixtures/fittings, planning, alterations and/or lease details
- Appliances & services are untested, dimensions are approximate and floor plans are not to scale
- Through a Homewise Home For Life Plan people aged 60+ can secure this property for up to 50% less, by purchasing a Lifetime Lease.



51915361/20250820/CC1/DT