



125 Grace Dieu Road, Whitwick

£399,950



# 125 Grace Dieu Road

Whitwick, Coalville

This THREE BEDROOM SPACIOUS DETACHED FAMILY HOME WITH AN ADDITIONAL ONE BEDROOM ANNEX comes to the market offering NEWLY FITTED WINDOWS IN 2024 and situated on the popular Grace Dieu Road within Whitwick. In brief there is an entrance hall, living room, dining room, conservatory, kitchen and the annex which has one bedroom, en-suite, kitchen area and sitting room to the ground floor. To the first floor there is THREE DOUBLE bedrooms and family bathroom. Outside there is a large sunny south west facing private rear garden and ample off road parking to the front of the property with a large blocked paved driveway. Early viewings are highly advised to avoid disappointment.

Council Tax band: C

Tenure: Freehold

EPC Energy Efficiency Rating: D

EPC Environmental Impact Rating: E

- Ample Off Road Parking
- Popular Village Location
- Sunny South West Facing Rear Garden
- Flexible Accommodation
- Detached Family Home
- One Bedroom Annex





## GROUND FLOOR

### Entrance Hall

6' 4" x 3' 11" (1.93m x 1.19m)

Entered through a composite front door with glass panel to side, stairs rising to first floor and also accessing the annex and living room.

### Living Room

11' 10" x 16' 4" (3.61m x 4.98m)

Having uPVC double glazed window to front with fitted shutter blinds, electric fireplace with a brick surround and tiled hearth, timber effect flooring and double doors accessing the dining room.

### Dining Room

11' 2" x 9' 5" (3.40m x 2.87m)

Having timber effect flooring, radiator, pendant lighting accessing the conservatory.

### Conservatory

9' 1" x 9' 10" (2.77m x 3.00m)

Being uPVC construction and having pendant lighting, tiled flooring with patio doors out on to the garden.

### Kitchen

11' 2" x 9' 11" (3.40m x 3.02m)

Offering a range of wall and base units, one and a half sink drainer unit with a swan neck mixer tap, uPVC double glazed window over looking the garden, tiled splashback, wall mounted gas fed boiler, tiled effect vinyl flooring, pantry cupboard, space and plumbing for appliances.





## ANNEX

Comprises a sitting room, kitchen, shower room and bedroom.

### Bedroom Four

11' 5" x 8' 7" (3.48m x 2.62m)

Having uPVC double glazed window to front, built in storage cupboard, and sloped wheelchair access.

### En-suite

3' 10" x 8' 7" (1.17m x 2.62m)

This three piece suite comprises vanity wash hand basin with mixer tap, push button wc, shower enclosure with glass screen, tiled flooring and walls, extractor fan, uPVC double glazed opaque window to side and radiator.

### Annex Kitchen

5' 8" x 8' 10" (1.73m x 2.69m)

With a range of base units with a rolled edge workface, two ring induction hob, stainless steel sink and drainer unit, timber effect flooring through to the sitting room area.

### Annes Sitting Room/Conservatory

8' 1" x 8' 8" (2.46m x 2.64m)

Continued timber effect flooring, radiator, uPVC double glazed windows to either side and French door leading out to the rear garden.

## FIRST FLOOR LANDING

Stairs rising to the first floor gives way to three bedrooms, bathroom, storage cupboard, loft access and having a uPVC double glazed window to side.

### Bedroom One

11' 4" x 11' 3" (3.45m x 3.43m)

Enjoying a range of fitted wardrobes and uPVC double glazed window to front with fitted shutter blinds.





**Bedroom Two**

10' 9" x 11' 1" (3.28m x 3.38m)

Having uPVC double glazed window to the rear and radiator.

**Bedroom Three**

8' 0" x 8' 5" (2.44m x 2.57m)

Having uPVC double glazed window to front and a storage cupboard.

**Bathroom**

5' 4" x 8' 8" (1.63m x 2.64m)

This three piece suite comprises a p-shaped bath with thermostatic shower over, vanity wash hand basin and low level flush wc. Also benefitting from a dual aspect with uPVC double glazed opaque windows to both side and rear, extractor fan, heated towel rail and timber effect vinyl flooring.

**OUTSIDE****Private Rear Garden**

Being a sunny south west facing rear garden and having paved patio seating area with dwarf wall and steps leading down to the pathway and lawn area with mature tree and shrub borders along with a further side patio with timber shed and raised planted borders. Beyond the lawn area there is a stone wall and further lawn area all surrounded by timber fencing and hedging. There is also a side gate accessing the front of the property.

**Front**

Having a tarmacadamed and block paved driveway providing ample off road parking for multiple vehicles and giving access to the front beneath a canopy porch along with an electric car charging point.



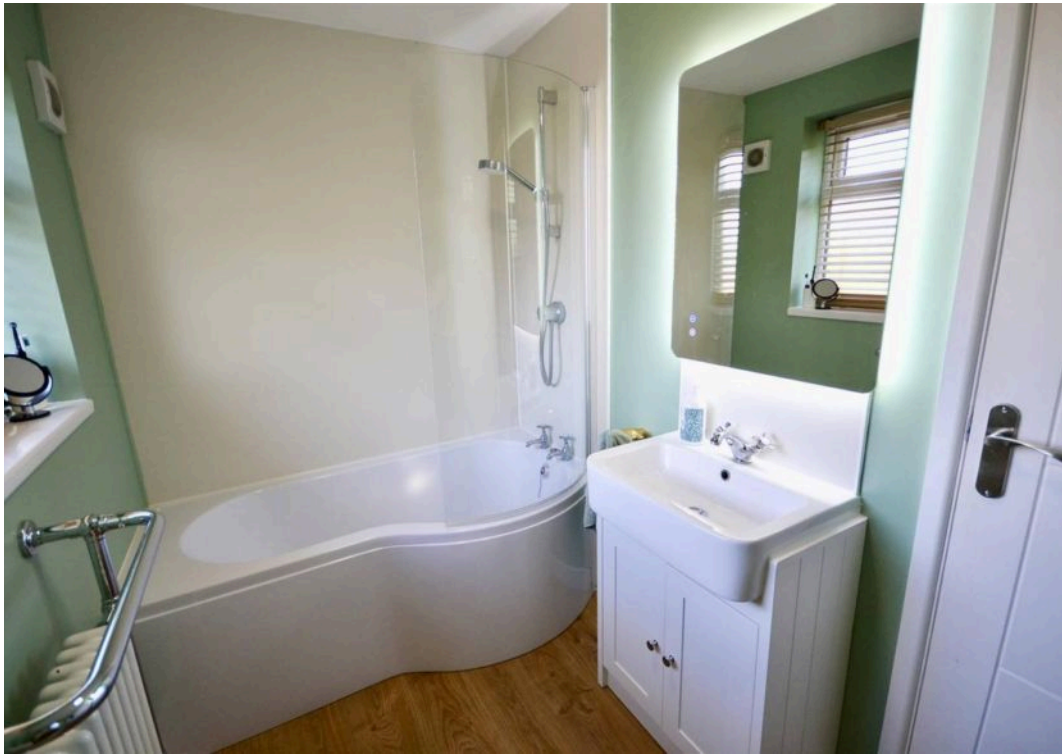




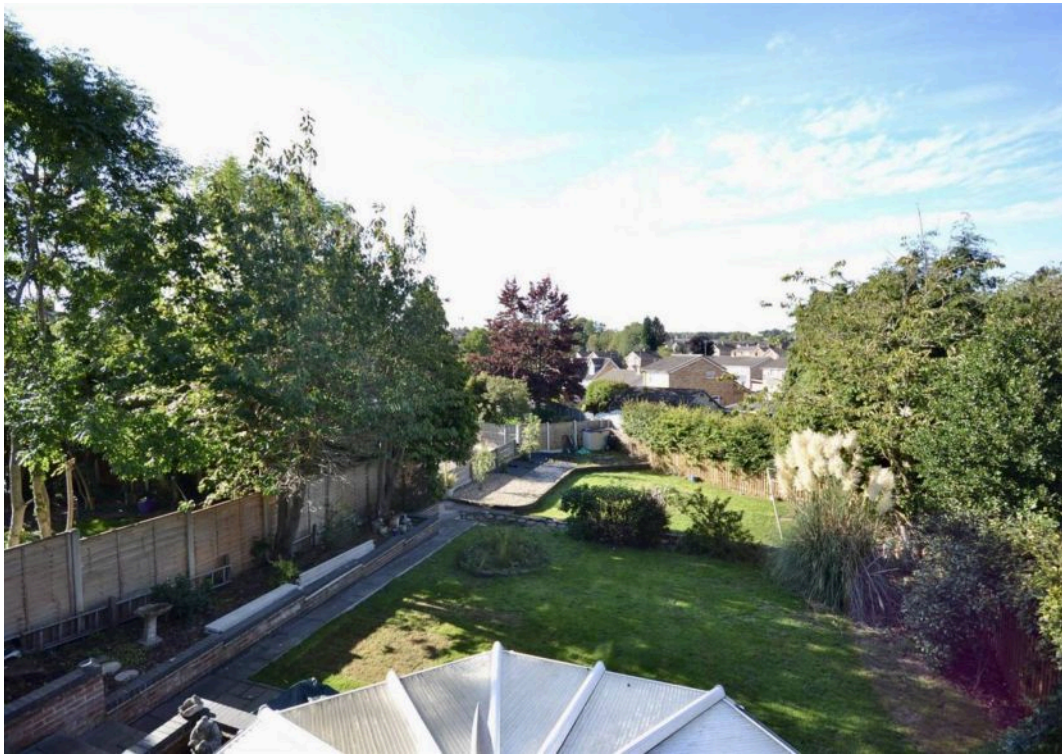














Ground Floor



First Floor







## Sinclair Estate Agents

Sinclair Estate Agents, 3 Belvoir Road, Coalville – LE67 3PD

01530 838338

[coalville@sinclairestateagents.co.uk](mailto:coalville@sinclairestateagents.co.uk)

[www.sinclairestateagents.co.uk/#/](http://www.sinclairestateagents.co.uk/#/)

Digital Markets Competition & Consumers Act 2024 (DMCC ACT) – The DMCC Act which came into force in April 2025 is designed to ensure that consumers are treated fairly and have all the necessary information required to make an informed purchase. Sinclair are committed to providing material information relating to the properties we market to assist prospective buyers when making a decision to proceed with a property purchase. It should be noted that all information will need to be verified by the buyers solicitors and is given in good faith from information obtained by sources including but not restricted to HMRC Land Registry, Spectre, Gov.uk and information provided and verified by our vendors.