



LEEWARD GARDENS, SW19

£1,750,000

Town house
Four bedrooms
Three bathrooms
Two receptions
Off-street parking
Energy rating: c

@marshandparsons
marshandparsons.co.uk

MARSH &
PARSONS

ABOUT THE PROPERTY

Set in a desirable residential cul-de-sac, just moments from the town centre and within walking distance of Wimbledon Village, a most appealing four bedroom family house with well-planned accommodation set over three floors and off-street parking.

Leeward Gardens is conveniently placed for both Wimbledon Village with its restaurants and the open spaces of the Common and Wimbledon town centre with its Mainline/District line station, shops, bars restaurants and entertainment facilities. The A3 provides access to the M25 and other major road networks. This property is also well located for Wimbledon's highly regarded schools.





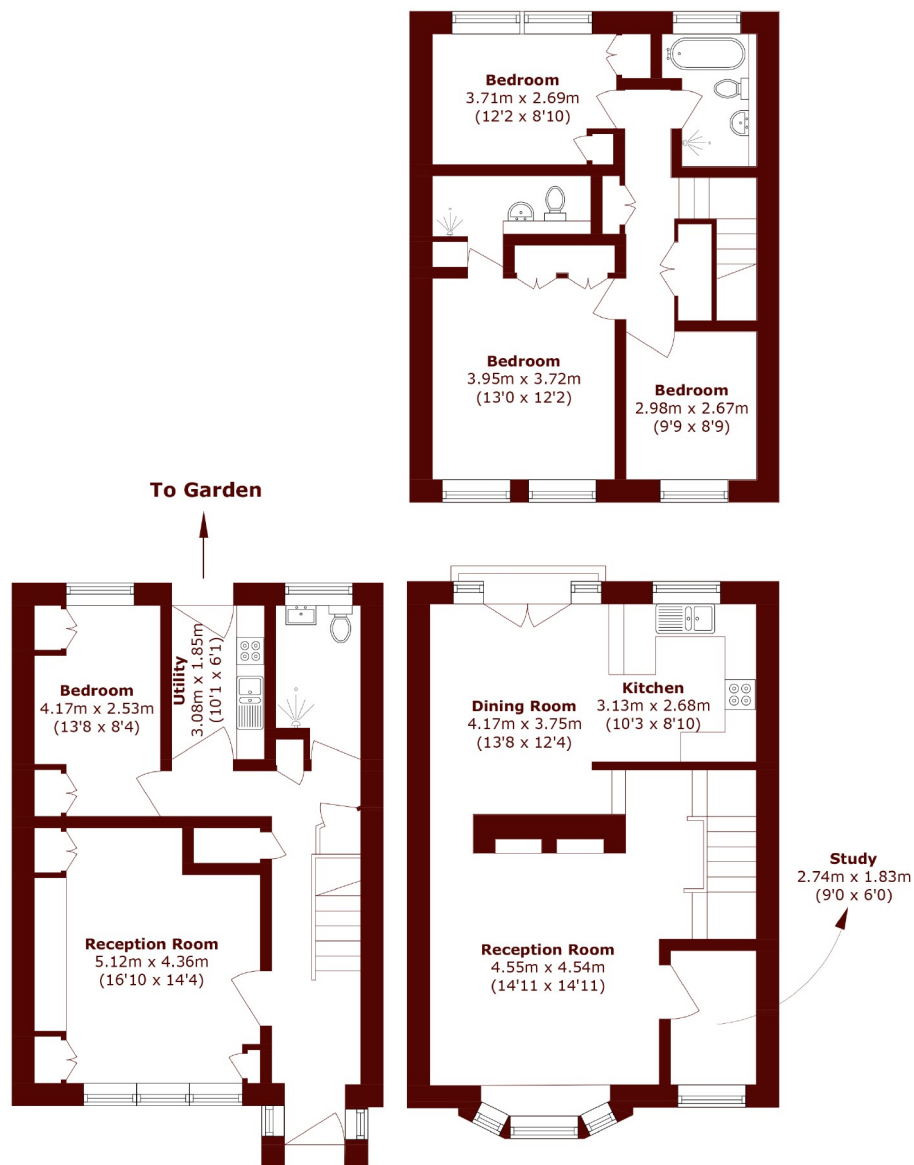


FURTHER DETAILS

The ground floor includes a welcoming hallway, a front reception room with fitted cabinetry, bedroom, shower room, and a fully equipped utility room that opens onto a south westerly rear garden, with gated access to Wimbledon Hill Road. The first floor offers a bright and airy reception room and a modern kitchen/dining room with a Juliet balcony overlooking the garden. On the second floor, the main bedroom features fitted wardrobes and an en suite bathroom, with two further bedrooms and a family bathroom completing the layout.



STEP INSIDE LEEWARD GARDENS



Total area (approx.): 182.3 sq. m (1,962.0 sq. ft)

Wimbledon
020 8879 6660

Energy Rating: C We aim to make our particulars both accurate and reliable. However, they are not guaranteed; nor do they form part of an offer or contract. If you require clarification on any points then please contact us, especially if you're traveling some distance to view. Please note that appliances and heating systems have not been tested and therefore no warranties can be given as to their good working order

MARSH &
PARSONS