



Selbon

Residential sales & lettings

Longbourn Way, Medstead, Alton,
Hants, GU34 5GX

Offers in excess of £350,000 Freehold



01252 979300

Selbonproperty.co.uk

- Semi Detached Home
- 'L' Shaped Lounge/Dining room
- Main Bedroom With En Suite
- Double Glazed Windows & Gas Central Heating
- Driveway For 2 Cars & EV Charger
- Entrance Hall & Cloakroom
- Refitted Kitchen
- Second Double Bedroom & Bathroom
- Enclosed Southerly Facing Rear Garden
- No Onward Chain

Selbon Estate Agents are delighted to offer this delightful semi detached home to the market, built in 2017 by Miller Homes. situated on the Austen Fields development, in the popular village of Medstead.

The current vendor have created a wonderful home over the last 9 years with some lovely personal touches, the property has been finished to a high specification and is offered in excellent condition throughout.

We are advised that the latest annual development charge was £433.59.

Accessed via a path leading to a canopied entrance with a recently fitted double glazed front door to the entrance hall, which has Amtico flooring and doors leading to the lounge, kitchen and cloakroom as well as stairs to the first floor landing.

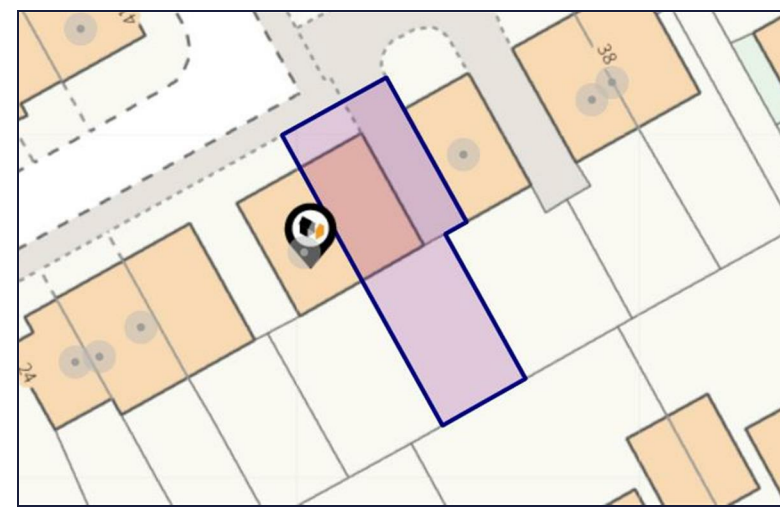
The cloakroom has been upgraded with wood panelling, a wood shelf with inset circular sink and an attractive tiled wall, the refitted kitchen has a range of storage units including a corner pantry cupboard, work surfaces & integrated appliances and the large 'L' shaped lounge/dining room has an understairs storage cupboard, space for table and chairs and double glazed French doors.

The first floor boasts a main bedroom with an en suite shower room, a second double bedroom with loft access and a family bathroom.

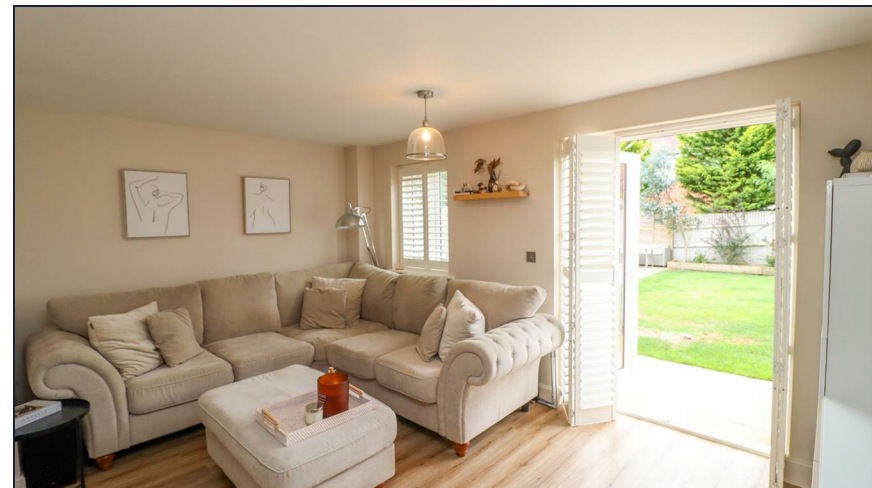
Further benefits include gas central heating, double glazed windows with shutter blinds, a southerly facing garden and a driveway with parking for 2 cars and an EV charger.

The village of Medstead has a church, public house, primary school, local shops and a number of clubs and societies. The larger village of Four Marks and Alresford provide a wider range of facilities including the well renowned Perins Secondary School at Alresford. The historic market town of Alton has a good range of high street shops, Waitrose & M&S Simply Food, markets, senior schools, further education college, Alton School (independent school for boys and girls), sports centre, outlying golf courses & mainline station to London Waterloo.

No onward chain.





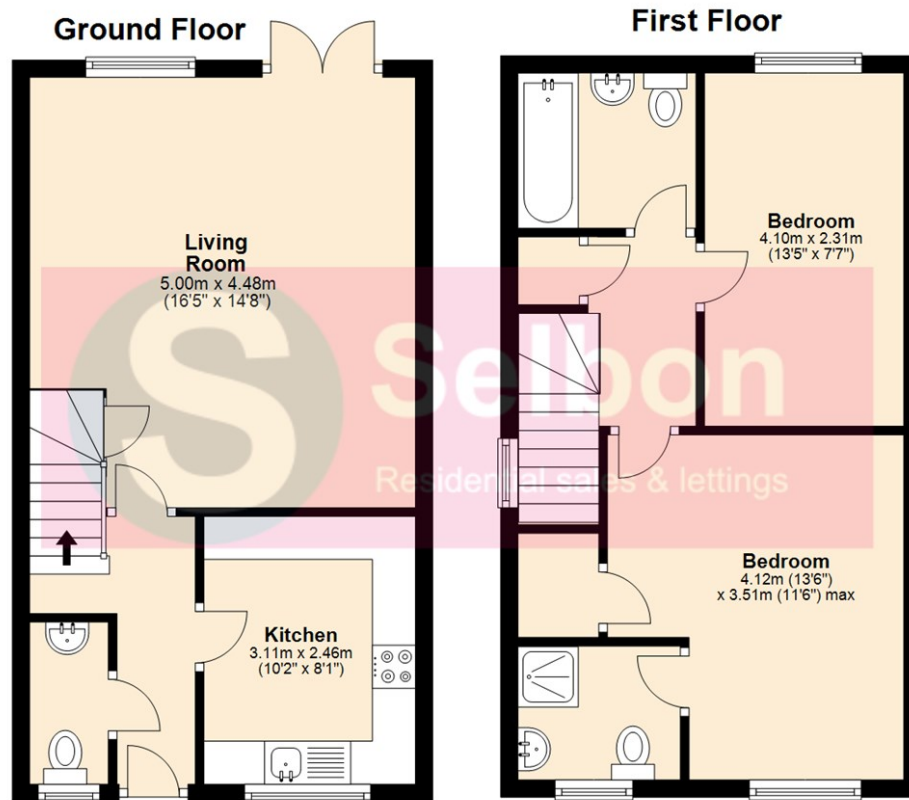




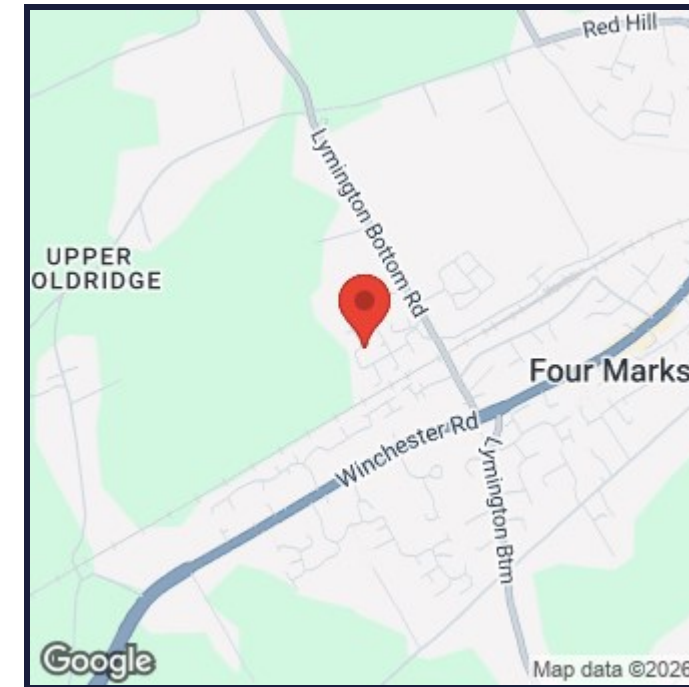




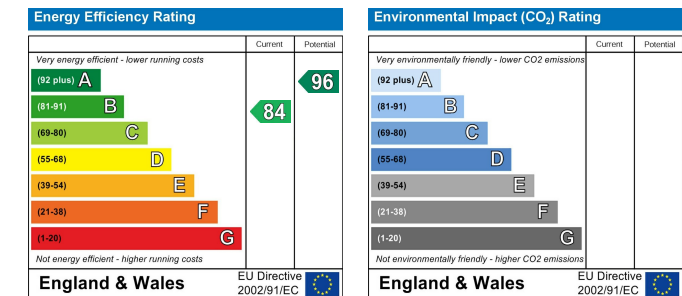
Floor Plans



Area Map



Energy Performance Graph



Council Tax Band: D

Viewing

For further information on this property or to arrange a viewing please contact Selbon Estate Agents on 01252 979300

We give notice that these particulars are produced in good faith and in accordance with the Consumer Protection from Unfair Trading Regulations 2008 (CPR). They are set out as a general guide only and do not constitute any part of a contract or warranty whatsoever. Intending purchasers should not rely on them as statements of representation of fact, but must satisfy themselves by inspection or otherwise as to their accuracy. No person in the employment of Selbon has any authority to make or give any representation or warranty whatever in relation to the property. A detailed survey has not been carried out nor have the services, heating systems, appliances or specific fittings been tested. Any photograph incorporated within these particulars shows only certain parts of the property and it must not be assumed that any contents or fixtures and fittings shown in the photographs are either included with the property or indeed remain in it. Room sizes shown and any floor plans should not be relied upon for carpets and furnishings. If there is any point which is of particular importance to you we will be pleased to check the information for you and confirm that the property remains available. This is particularly important if you are contemplating travelling some distance to view the property.

Selbon Property Services Ltd

Registered Office, 16 Levignen Close, Church Crookham, Fleet, Hampshire, GU52 0TW

Company Registration Number: 12108205 VAT Number: 370 7956 65

Tel: 01252 979300 Email: sales@selbonproperty.co.uk