

WILKINSON

SALES • LETTINGS • MANAGEMENT

£260,000

Gadwell Road, Walton Cardiff, Tewkesbury, GL20



2

Bedrooms



2

Bathrooms

101 High Street, Tewkesbury, Gloucestershire, GL20 5JZ |
Info@wilkinsonslm.co.uk

01684 367736



- End Terrace House
- Lounge with Electric Fireplace
- Refitted Kitchen/Dining Room with Internal Access to Garage
- Two Bedrooms
- Ensuite & Family Bathroom
- Low Maintenance Rear Garden with Side Access
- Garage with Power & Lighting
- Driveway Parking
- UPVC Double Glazing Throughout
- Gas Central Heating with New Combi Boiler Installed in 2022
- New Flooring & Carpets Throughout

Wilkinson SLM are delighted to bring to the market this charming two-bedroom end-terrace home, ideally positioned within the ever-popular Walton Cardiff development. Newly decorated throughout and finished with new flooring and carpets, this attractive home is perfectly suited to first-time buyers, investors, or those looking to downsize.

The accommodation begins on the ground floor with a welcoming lounge, featuring an electric fireplace. A door leads through to the refitted kitchen/dining room, offering a modern range of base and wall units, a built-in electric oven, gas hob, and space and plumbing for a dishwasher. An understairs storage cupboard provides additional practicality. From the dining area, double doors open onto the rear garden, while an internal door gives convenient access to the garage, which benefits from power, lighting, and space and plumbing for a washing machine.

Externally, the private rear garden is designed for low maintenance, featuring a patio area ideal for outdoor seating, with the remainder laid to lawn. A side gate provides useful access to the front of the garage. The garage is complemented by driveway parking directly in front.

To the first floor are two bedrooms, with bedroom one enjoying the added benefit of an ensuite shower room. A modern family bathroom serves the second bedroom, while an airing cupboard on the landing completes the first-floor layout.

Further benefits include UPVC double glazing throughout, gas central heating powered by a new combination boiler installed in 2022, and the advantage of being an end-terrace position.

Lounge 14' 10" x 10' 2" (4.52m x 3.10m) *maximum measurements*

Kitchen/Dining Room 8' 8" x 13' 4" (2.64m x 4.06m)

Bedroom One 13' 9" x 10' 5" (4.19m x 3.17m) *maximum measurements*

Ensuite 5' 3" x 4' 11" (1.60m x 1.50m)

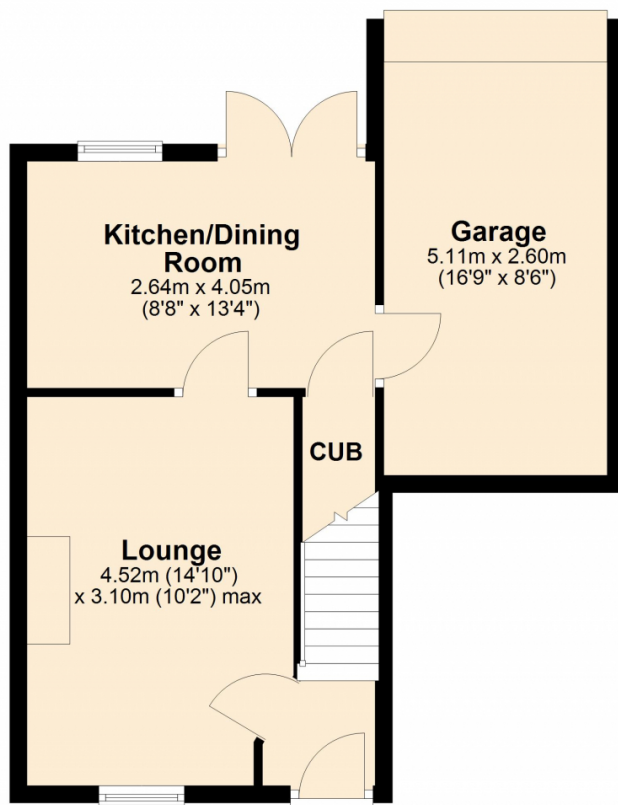
Bedroom Two 9' 11" x 7' 1" (3.02m x 2.16m)

Bathroom 6' 3" x 6' 1" (1.91m x 1.85m)

Garage 16' 9" x 8' 6" (5.11m x 2.59m)

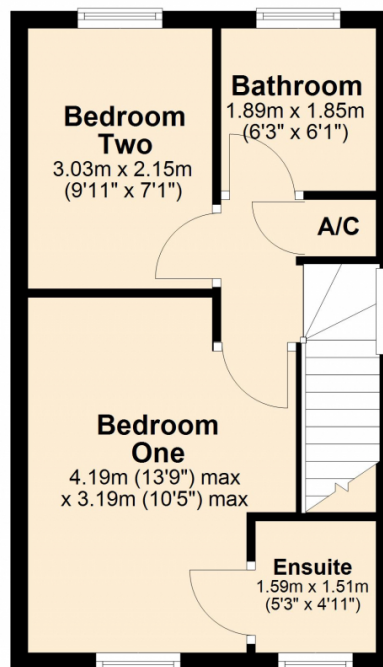
Ground Floor

Approx. 43.1 sq. metres (463.6 sq. feet)



First Floor

Approx. 29.4 sq. metres (316.7 sq. feet)



Total area: approx. 72.5 sq. metres (780.4 sq. feet)

