



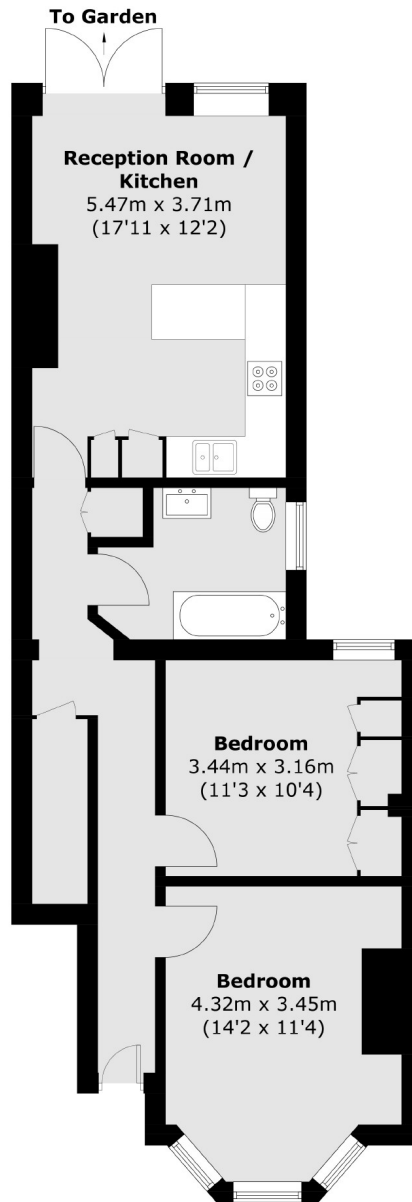
## Larden Road, W3

£2,600 pw (£2,600.00 pcm)

A large two bedroom ground floor flat on the borders of Acton and Chiswick. Larden Road offers contemporary living, wooden floor and a well maintained private garden.

Larden Road is 0.8 miles away from Turnham Green.

- Two Bedrooms • Ground Floor • Private Garden •
- Modern Throughout • Open Plan Kitchen •



Total area (approx.): 64.7 sq. m (696.4 sq. ft)

Robertson Smith & Kempson Acton Lettings  
137 High Street,  
Acton, London, W3  
020 8896 3967  
[actonlettings@robertsonsmithandkempson.co.uk](mailto:actonlettings@robertsonsmithandkempson.co.uk)

Energy Rating: C. We aim to make our particulars both accurate and reliable. However they are not guaranteed; nor do they form part of an offer or contract. If you require clarification on any points then please contact us, especially if you're traveling some distance to view. Please note that appliances and heating systems have not been tested and therefore no warranties can be given as to their good working order.