

598 Wilmslow Road, Didsbury, Manchester, M20 3DE



**JP & Brimelow**  
ESTATE AGENTS



🛏️ 5 🚿 2 🛋️ 3 ≡ D

\*\*\*VIDEO TOUR AVAILABLE\*\*\* A beautifully presented and spacious FIVE DOUBLE BEDROOM Detached home, in a sought-after residential area on Wilmslow Road. Offering excellent transport link, creating easy access to Manchester City Centre, Manchester Airport and Withington village. Close to the famous Didsbury village, with its array of bustling local restaurants, bars and independent shops.

The well-planned accommodation briefly comprises a porch, a welcoming entrance hallway with a downstairs W.C. To the front is a dining room featuring a bay window, while to the rear a spacious living/morning room provides access to the enclosed rear garden. The ground floor is further enhanced by a fitted kitchen, an office, a family room, a cloak room and a utility room.

The first floor comprises four bedrooms, a two-piece bathroom, and a separate W.C. Stairs then lead to the second floor, which features an additional double bedroom with ample storage, along with a three-piece wet room.

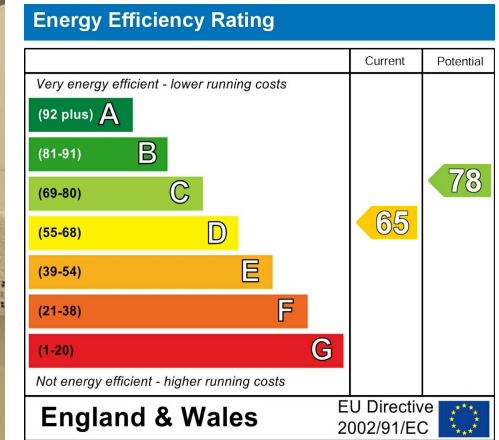
This home further features a paved driveway, providing practical off-street parking and both a front garden and a charming rear enclosed lawned garden with a decked seating area. Internal inspection essential to appreciate this fantastic home.

£895,000



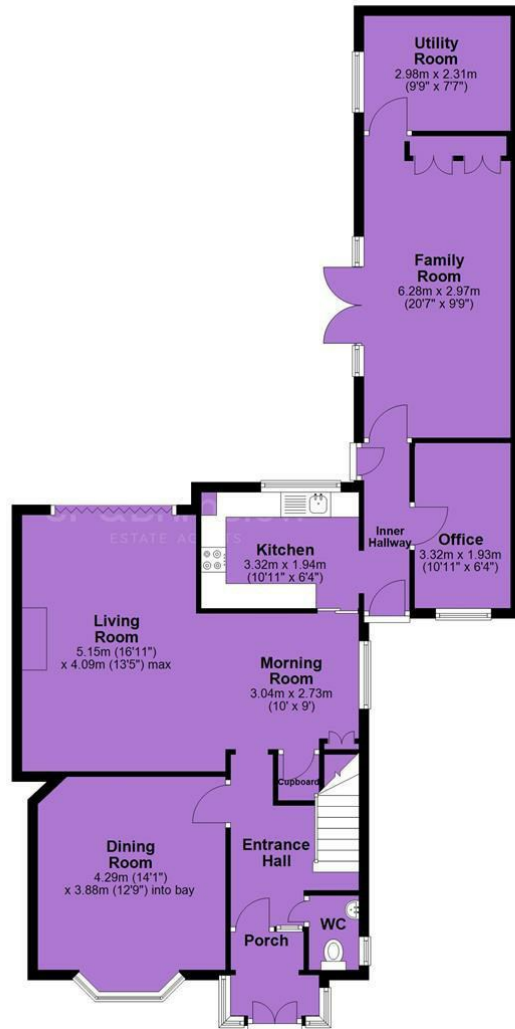


## EPC Chart

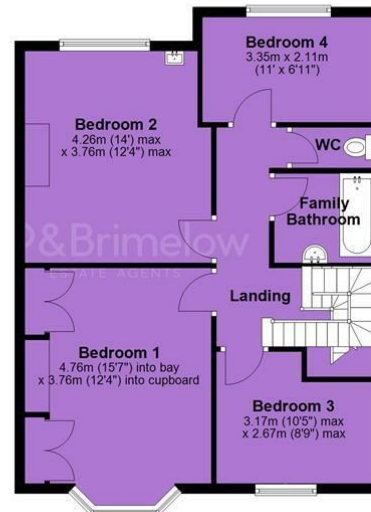


Tenure: Freehold Council Tax Band: E

Ground Floor



First Floor



Second Floor



JP & Brimelow Estate Agents Ltd  
 430 Barlow Moor Road, Manchester, M21 8AD  
 Tel: 0161 8822233  
 E: sales@jpbrimelow.co.uk www.jpandbrimelow.co.uk



**JP & Brimelow**  
 ESTATE AGENTS

NOTICE: JP & Brimelow Estate Agents Ltd for themselves and for the vendors or lessors of this property whose agents they give notice that:

- (i) the particulars are set out as a general outline only for the guidance of intending purchasers or lessees, and do not constitute, nor constitute part of, an offer or contract;
- (ii) all descriptions, dimensions, references to the condition and necessary permissions for use and occupation, and other details are given in good faith and are believed to be correct but any intending purchasers or tenants should not rely on them as statements or representations of fact but must satisfy themselves by inspection or otherwise as to the correctness of each of them;
- (iii) no person in the employment of JP & Brimelow Estate Agents Ltd has any authority to make or give any representation or warranty whatever in relation to this property.

jpandbrimelowstateagents

@jpandbrimelow

