



Perivale Lane, UB6

£875,000

A wonderful four bedroom family home with versatile living accommodation over two floors. In fantastic condition throughout with a newly fitted kitchen, there is a spacious reception, additional home office/second reception and a large garden. Off street parking for multiple cars and electric car charging point. A perfect family home.

Located approximately half a mile from Perivale Central Line Station, overlooking St Benedicts playing fields with Ealing Golf Club at the end of the lane. Pitshanger Lane is a lovely walk through the golf course into Pitshanger Park and the tennis courts.

Features

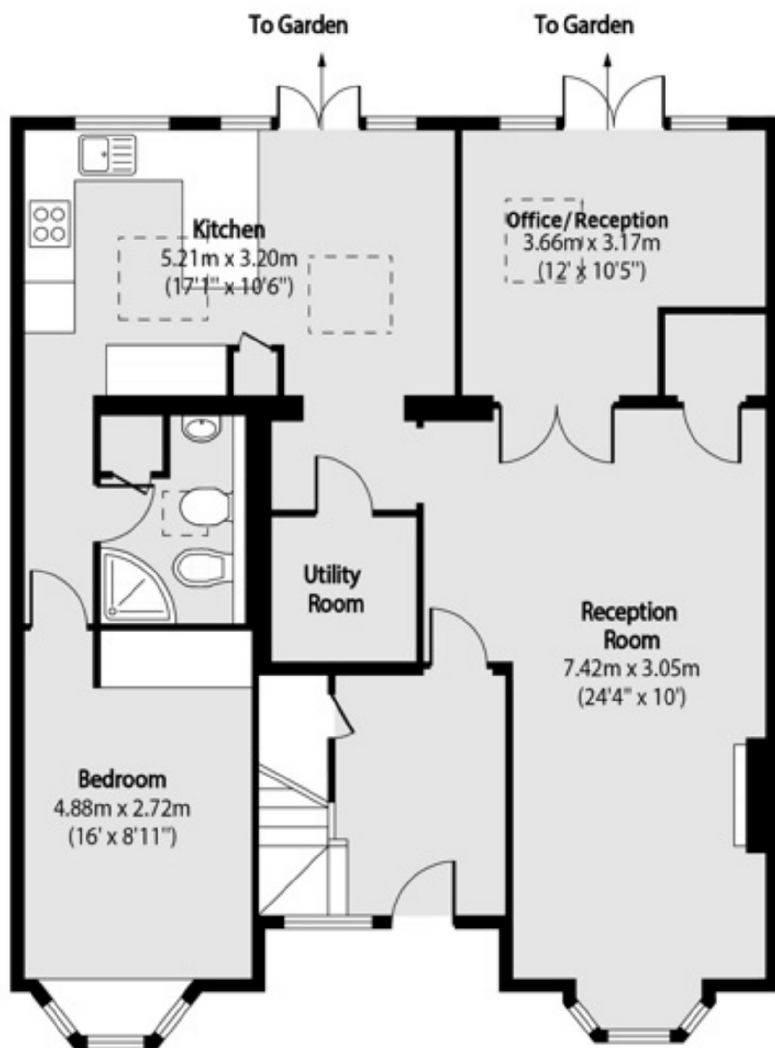
- Four Bedrooms
- Two Bathrooms
- Newly Fitted Kitchen
- Utility Room
- Large Garden
- Off Street Parking



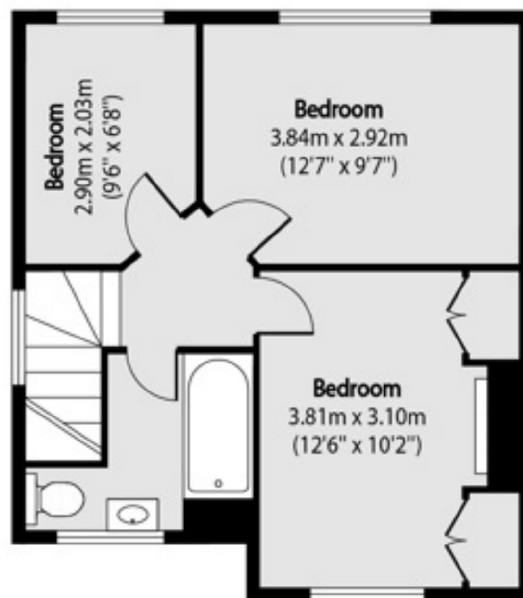
Perivale Lane, UB6



Perivale Lane, Greenford, UB6



Ground Floor



First Floor

Total area (approx): 128.76 sq m (1386 sq. ft)