



Guide Price
£350,000

Freehold

3x  1x  2x 

**Pound Farm Cottages,
The Street, Newington,
Folkestone, Kent, CT18**

OVER 60?

Secure this property
for up to **59% less!**

Wards
Helping you move forwards



Main features

- Situated in a quiet village location with garage en-bloc and off road parking
- Low maintenance wrap around garden
- Log burner
- Downstairs toilet
- Generous sized bedrooms with built in storage

Accommodation

GROUND FLOOR

Hallway
 Lounge: 16'3 x 13'8 (4.96m x 4.17m)
 Kitchen/Diner: 16'11 x 9'4 (5.16m x 2.85m)
 Downstairs Toilet

FIRST FLOOR

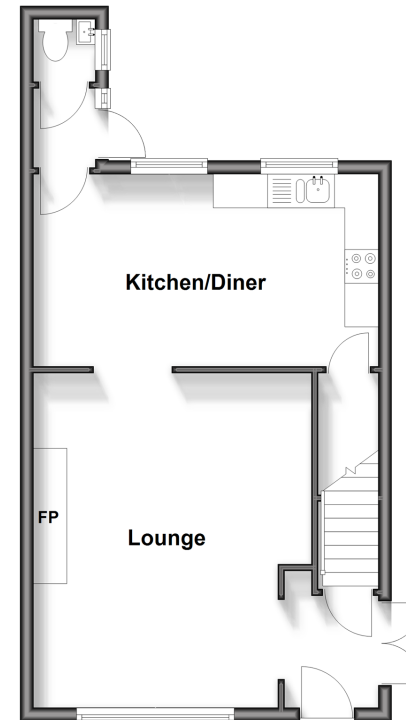
Landing
 Bedroom 1: 15'4 x 10'4 (4.68m x 3.15m)
 Bedroom 2: 9'11 x 9'10 (3.02m x 3.00m)
 Bedroom 3: 10'2 x 6'3 (3.10m x 1.91m)
 Bathroom

OUTSIDE

Wrap Around Garden
 Garage En-bloc

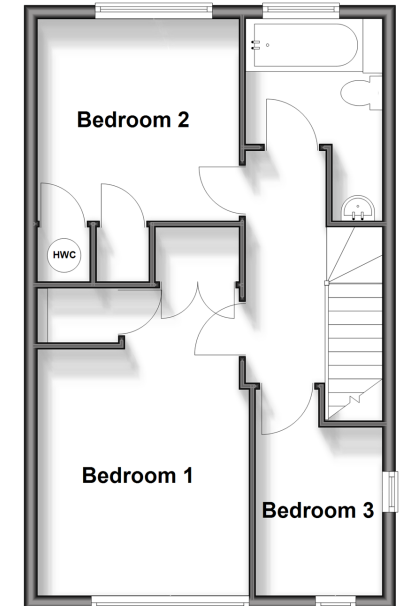
Ground Floor

Approx. 42.8 sq. metres (460.4 sq. feet)



First Floor

Approx. 44.1 sq. metres (474.9 sq. feet)



Call Folkestone - 01303 256505 ■ wardsfolkent.co.uk

- Legal advice should be taken to verify fixtures/fittings, planning, alterations and/or lease details
- Appliances & services are untested, dimensions are approximate and floor plans are not to scale
- Through a Homewise Home For Life Plan people aged 60+ can secure this property for up to 59% less, by purchasing a Lifetime Lease.



12638270/20250430/CC/CC